

LAKE COUNTY EXISTING LUMINAIRE SCHEDULE 100, 200, 700

| TYPE | DESCRIPTION | LIGHT SOURCE | DRIVER/ TRANSFORMER | NEW WORK | NOTES |
|--------|---|-------------------|---------------------------|-------------|-------|
| F1 | DIMMABLE 2X4 RECESSED TROFFER | 2-F3278 | 0-10V DIMMING BALLAST | R4 | C 1 |
| F1A | DIMMABLE 2X4 TROFFER WITH BATTERY BACK-UP | 2-F3278 | 0-10V DIMMING LED BALLAST | R4 | C |
| F2 | STEP-DIMMING 2X4 RECESSED TROFFER | 2-F3278 | STEP-DIMMING BALLAST | R6 | E |
| F2A | STEP-DIMMING 2X4 RECESSED TROFFER WITH BATTERY BACK-UP | 2-F3278 | STEP-DIMMING BALLAST | R6 | E |
| F3 | RECESSED TROFFER, FLAT LENS, SHALLOW DEPTH | 2-F54TSHO | ELECTRONIC BALLAST | L3 | A |
| F3A | RECESSED TROFFER, FLAT LENS, SHALLOW DEPTH WITH BATTERY BACK-UP | 2-F54TSHO | ELECTRONIC BALLAST | L3E | A |
| F4 | 1X4 FLUORESCENT LUMINAIRE IN SURFACE MOUNT BACKBOX | 2-F3278 | STEP-DIMMING BALLAST | R6 | E |
| F4A | 1X4 FLUORESCENT LUMINAIRE IN SURFACE MOUNT BACKBOX WITH BATTERY BACK-UP | 2-F3278 | STEP-DIMMING BALLAST | R6 | E |
| F5 | 1X1 RECESSED FLUORESCENT LUMINAIRE | 1-32W TRT | ELECTRONIC BALLAST | R1 | E 1 |
| F5A | 1X1 RECESSED FLUORESCENT LUMINAIRE WITH BATTERY BACK-UP | 1-32W TRT | ELECTRONIC BALLAST | R1 | E |
| F6 | 2' LONG WALL MOUNTED VANITY LIGHT | 1-F1778 | ELECTRONIC BALLAST | R2 | C |
| F7 | 4' FLUORESCENT STRIP LIGHT, SUSPENDED OR CEILING SURFACE MOUNTED | 2-F3278 | ELECTRONIC BALLAST | R4 | C |
| F7A | 4' FLUORESCENT STRIP LIGHT, SUSPENDED OR CEILING SURFACE MOUNTED WITH BATTERY BACK-UP | 2-F3278 | ELECTRONIC BALLAST | R4 | C |
| F7B | 8' FLUORESCENT STRIP LIGHT, SUSPENDED OR CEILING SURFACE MOUNTED | 4-F3278 | ELECTRONIC BALLAST | R4 | C |
| F8 | 1X4 RECESSED FLUORESCENT LUMINAIRE | 2-F3278 | 0-10V DIMMING BALLAST | R4 | C |
| F9/27 | RECESSED PERIMETER FLUORESCENT LUMINAIRE, 1 LAMP IN PROFILE | 4-F3278 & 2-F25T8 | ELECTRONIC BALLAST | R3 & R4 | C |
| F10/8 | 8' LONG PENDANT MOUNTED FLUORESCENT LUMINAIRE, 2 LAMPS IN PROFILE | 4-F3278 | 0-10V DIMMING BALLAST | R4 | C |
| F10/16 | 16' LONG PENDANT MOUNTED FLUORESCENT LUMINAIRE, 2 LAMPS IN PROFILE | 8-F3278 | 0-10V DIMMING BALLAST | R4 | C |
| F10A | 24' LONG PENDANT MOUNTED FLUORESCENT LUMINAIRE, 2 LAMPS IN PROFILE | 12-F3278 | 0-10V DIMMING BALLAST | R4 | C 1 |
| F11 | LED DOWNLIGHT | LED | LED DRIVER | NO NEW WORK | |
| F12 | LED WALLWASHER | LED | LED DRIVER | NO NEW WORK | |
| F13 | 4' FLUORESCENT UNDERCABINET LIGHT | 1-F3278 | ELECTRONIC BALLAST | R4 | C |
| F13/2 | 2' FLUORESCENT UNDERCABINET LIGHT | 1-F1778 | ELECTRONIC BALLAST | R2 | C |
| F14 | LED PENDANT | LED | LED DRIVER | NO NEW WORK | |
| F15 | 34" ROUND DECORATIVE FLUORESCENT PENDANT | 3-55W BIAx | 0-10V DIMMING BALLAST | R5 | E 1 |
| F15A | 34" ROUND DECORATIVE FLUORESCENT PENDANT WITH BATTERY BACK-UP | 3-55W BIAx | 0-10V DIMMING BALLAST | R5 | E |
| F16/12 | 12' RECESSED LINEAR FLUORESCENT WALLWASHER | 3-F3278 | ELECTRONIC BALLAST | R4 | C 1 |
| F17 | LED ADJUSTABLE | LED | LED DRIVER | NO NEW WORK | |
| F18 | LED SURFACE MOUNTED (F188 SIMILAR, BUT 120V) | LED | LED DRIVER | EL1 | A,D 1 |
| F18A | LED SURFACE MOUNTED WITH BBU (F18C SIMILAR, BUT 120V) | LED | LED DRIVER | EL1E | A,D |
| F19 | LED WALLPACK | LED | LED DRIVER | EL2 | A,D |
| F19A | LED WALLPACK WITH BBU | LED | LED DRIVER | EL1E | A,D |
| F20 | LED EXIT LIGHT | LED | LED DRIVER | NO NEW WORK | |
| F21 | EXISTING DIMMABLE 2X4 RECESSED TROFFER | 2-F1778 | ELECTRONIC BALLAST | R2 | C 1 |
| F21A | EXISTING DIMMABLE 2X4 RECESSED TROFFER WITH BATTERY BACK-UP | 2-F1778 | ELECTRONIC BALLAST | R2 | C |
| F21B | EXISTING DIMMABLE 2X4 RECESSED TROFFER WITH STEP DIMMING | 2-F1778 | STEP-DIMMING BALLAST | R7 | C 1 |
| F23 | EXISTING | LED | LED DRIVER | EL3 | G |

NOTES:
 A EXISTING LUMINAIRE TO BE REMOVED AND REPLACED WITH NEW, RECONNECT TO EXISTING POWER, CONTROLS, SUPPORTS, ETC.
 B REPLACE LAMP ONLY, BYPASS AND REMOVE BALLAST
 C REPLACE LAMP AND BALLAST WITH NEW LED LAMP AND DRIVER SYSTEM
 D CONTRACTOR IS TO HIRE DISTRICT APPROVED PAINTER TO PAINT BEHIND EXISTING LUMINAIRE TO MATCH EXISTING FINISH.
 E REPLACE LAMP ONLY, REPLACE EXISTING FLUORESCENT BALLAST WITH NEW TO MATCH EXISTING.
 F REMOVE EXISTING PENDANT LUMINAIRES, EXISTING CONTROLLED LIGHTING CIRCUIT AND ALL EXISTING LIGHTING CONTROLS TO REMAIN AT EXISTING LED BOLLARD, REPLACE "HEAD", INCLUDING ALL COMPONENTS EXCEPT FOR THE BOLLARD BASE WITH NEW ARE SPECIFIED.

LAKE COUNTY CAMPUS - NEW WORK LUMINAIRE SCHEDULE

| TYPE | MANUFACTURER & CATALOG NUMBER | DESCRIPTION | LIGHT SOURCE | DRIVER/ TRANSFORMER | WATTS | VOLTAGE | DETAIL |
|------|---|--|--|--------------------------|-------|---------|--------|
| L1 | DAYBRITE 2-FPZ-48L-840-4-DS-UNV-DIM OR APPROVED EQUAL | 2'X4' FLAT PANEL BACKLIT LED LUMINAIRE, WITH SEAMLESS EXTRUDED ALUMINUM FRAME AND SATIN WHITE ACRYLIC LENS. RECONNECT TO EXISTING LIGHTING CIRCUIT, CONTROLS, 0-10V WIRING, CEILING SUPPORT WIRES, ETC. | LED 4800 LUMEN 4000K 80+ CRI MIN 50,000 HR L80 | 0-10V DIMMING LED DRIVER | 37 | 0 MVOLT | |
| L1E | DAYBRITE 2-FPZ-48L-840-4-DS-UNV-DIM-BSL10LST OR APPROVED EQUAL | SAME AS TYPE L1, WITH CA T20 COMPLIANT BATTERY PACK. | LED 4800 LUMEN 4000K 80+ CRI MIN 50,000 HR L80 | 0-10V DIMMING LED DRIVER | 37 | 0 MVOLT | |
| L2 | DAYBRITE 2-FPZ-48L-840-4-DS-UNV-SDIM OR APPROVED EQUAL | SAME AS TYPE L1, WITH STEP-DIM LED DRIVER. | LED 4800 LUMEN 4000K 80+ CRI MIN 50,000 HR L80 | STEP-DIM LED DRIVER | 37 | 0 MVOLT | |
| L2E | DAYBRITE 2-FPZ-48L-840-4-DS-UNV-SDIM-BSL10LST OR APPROVED EQUAL | SAME AS TYPE L2, WITH CA T20 COMPLIANT BATTERY PACK. | LED 4800 LUMEN 4000K 80+ CRI MIN 50,000 HR L80 | STEP-DIM LED DRIVER | 37 | 0 MVOLT | |
| L3 | DAYBRITE 2-FPZ-74L-850-4-DS-UNV-DIM-SWZDTM OR APPROVED EQUAL | SAME AS TYPE L1, BUT HIGHER LUMEN OUTPUT, WITH INTEGRAL WIRELESS OCCUPANCY/DAYLIGHT SENSOR. | LED 7400 LUMEN 4000K 80+ CRI MIN 50,000 HR L80 | 0-10V DIMMING LED DRIVER | 57 | 0 MVOLT | |
| L3E | DAYBRITE 2-FPZ-74L-850-4-DS-UNV-DIM-SWZDTM-BSL10LST OR APPROVED EQUAL | SAME AS TYPE L3, WITH CA T20 COMPLIANT BATTERY PACK. | LED 7400 LUMEN 4000K 80+ CRI MIN 50,000 HR L80 | 0-10V DIMMING LED DRIVER | 57 | 0 MVOLT | |
| L4 | DAYBRITE 1-FPZ-36L-840-W-DS-UNV-DIM-FSF14 OR APPROVED EQUAL | 1'X6' FLAT PANEL BACKLIT LED LUMINAIRE, WITH SEAMLESS EXTRUDED ALUMINUM FRAME AND SATIN WHITE ACRYLIC LENS. PROVIDE WITH 1'X4 SURFACE MOUNT KIT. RECONNECT TO EXISTING LIGHTING CIRCUIT, CONTROLS, 0-10V WIRING, CEILING SUPPORT WIRES, ETC. | LED 3600 LUMEN 4000K 80+ CRI MIN 50,000 HR L80 | 0-10V DIMMING LED DRIVER | 30 | 0 MVOLT | |
| L4E | DAYBRITE 1-FPZ-36L-840-W-DS-UNV-DIM-FSF14-BSL10LST OR APPROVED EQUAL | SAME AS TYPE L4, WITH CA T20 COMPLIANT BATTERY PACK. | LED 3600 LUMEN 4000K 80+ CRI MIN 50,000 HR L80 | 0-10V DIMMING LED DRIVER | 30 | 0 MVOLT | |
| L5 | DAYBRITE FSS-4-40L-840-UNV-DIM (+PENDANT) OR APPROVED EQUAL | NOMINAL 4' LONG SURFACE MOUNTED COMPACT LINEAR LED FIXTURE, WITH STEEL HOUSING WITH WHITE PAINTED FINISH, AND RUGGED FROSTED CONToured ACRYLIC LENS. INSTALL IN CONTINUOUS ROW AS INDICATED ON THE PLANS. PROVIDE WITH AC CABLE KIT AND SUSPEND FIXTURE AT + 10" 0" A.F.F. U.O.N. WHERE CEILING IS OPEN TO STRUCTURE. | LED 4000 LUMEN 4000K 80+ CRI MIN 100,000 HR L70 | 0-10V DIMMING LED DRIVER | 30 | 0 MVOLT | |
| L5E | DAYBRITE: FSS-4-40L-840-UNV-DIM-EMLED(+PENDANT) OR APPROVED EQUAL | SAME AS FIXTURE TYPE F5, BUT WITH 10W CA TITLE 24 COMPLIANT BATTERY PACK. | LED 4000 LUMEN 4000K 80+ CRI MIN 100,000 HR L70 | 0-10V DIMMING LED DRIVER | 30 | 0 MVOLT | |
| L6 | DAYBRITE 2-FPZ-20L-840-2-DS-UNV-DIM OR APPROVED EQUAL | 2'X2' FLAT PANEL BACKLIT LED LUMINAIRE, WITH SEAMLESS EXTRUDED ALUMINUM FRAME AND SATIN WHITE ACRYLIC LENS. RECONNECT TO EXISTING LIGHTING CIRCUIT, CONTROLS, 0-10V WIRING, CEILING SUPPORT WIRES, ETC. | LED 2000 LUMEN 4000K 80+ CRI MIN 50,000 HR L80 | 0-10V DIMMING LED DRIVER | 23 | 0 MVOLT | |
| L6E | DAYBRITE 2-FPZ-20L-840-2-DS-UNV-DIM-BSL10LST OR APPROVED EQUAL | SAME AS TYPE L6, WITH CA T20 COMPLIANT BATTERY PACK. | LED 2000 LUMEN 4000K 80+ CRI MIN 50,000 HR L80 | 0-10V DIMMING LED DRIVER | 23 | 0 MVOLT | |
| L6B | DAYBRITE 2-FPZ-20L-840-2-DS-UNV-SDIM OR APPROVED EQUAL | SAME AS TYPE L6, WITH STEP-DIM LED DRIVER. | LED 2000 LUMEN 4000K 80+ CRI MIN 50,000 HR L80 | STEP-DIM LED DRIVER | 23 | 0 MVOLT | |
| L7 | LITHONIA EPANL-2X4-4800LM-80CRI-40K-MIN-EZT-MVOLT-NLTAIRP-RES7PDT OR APPROVED EQUAL | 2'X4' EDGE-LIT FLAT PANEL LED LUMINAIRE, WITH SEAMLESS ALUMINUM FRAME AND SATIN WHITE ACRYLIC LENS. PROVIDE WITH INTEGRAL MOTION/DAYLIGHT SENSOR COMPATIBLE WITH THE SPECIFIED WIRELESS LIGHTING CONTROL SYSTEM. U.O.N. LUMINAIRE IS TO REPLACE EXISTING TROFFER AT SAME LOCATION, RECONNECT TO EXISTING POWER SOURCE AND RE-ATTACH EXISTING CEILING SUPPORT WIRES. | LED 5119 LUMEN 4000K 80+ CRI MIN 50,000 HR L80 | 0-10V DIMMING LED DRIVER | 45 | 0 MVOLT | |
| L7A | LITHONIA EPANL-2X4-4800LM-80CRI-40K-MIN-EZT-MVOLT-NLTAIRP-RES7PDT-5MK OR APPROVED EQUAL | SAME AS LUMINAIRE TYPE F7, BUT WITH SURFACE MOUNT KIT. INSTALL IN CONTINUOUS ROW OR "END TO END" WHERE SHOWN ON PLANS. | LED 5119 LUMEN 4000K 80+ CRI MIN 50,000 HR L80 | 0-10V DIMMING LED DRIVER | 45 | 0 MVOLT | |
| L8 | LITHONIA BLWFP-60L-PSD5MT-MVOLT-EZ1-LP840-RES7PDT OR APPROVED EQUAL | SURFACE MOUNTED LED LUMINAIRE, NOMINAL 4' LONG WITH SMOOTH, FROSTED POLYCARBONATE "WRAPAROUND" LENS AND WINGED DOOR FRAME. PROVIDE WITH INTEGRAL WIRELESS CONTROLS AND SENSOR. | LED 4000 LUMEN 4000K 80+ CRI MIN 50,000 HR L80 | 0-10V DIMMING LED DRIVER | 35 | 0 MVOLT | |
| L8B | LITHONIA BLWFP-60L-PSD5MT-MVOLT-EZ1-LP840-RES7PDT OR APPROVED EQUAL | SAME AS TYPE L8, BUT CONTINUOUS 8' LENGTH. | LED 8000 LUMEN 4000K 80+ CRI MIN 50,000 HR L80 | 0-10V DIMMING LED DRIVER | 63 | 0 MVOLT | |
| L9 | LITHONIA BLT SERIES WITH INTEGRAL NLIQHT AIR SENSORS OR APPROVED EQUAL | EXISTING LUMINAIRE (2X4 OR 2'X2 AS SHOWN ON THE PLANS) FURNISHED BY OWNER. REPLACE EXISTING LUMINAIRE ON ONE-FOR-ONE BASIS, RECONNECT TO EXISTING LIGHTING CIRCUIT AND CEILING SUPPORT WIRES. DISTRICT HAS (6) 2'X2 FIXTURES CURRENTLY STORED IN MAINTENANCE BUILDING ON CAMPUS. | LED 4000 LUMEN 4000K 80+ CRI MIN 50,000 HR L80 | 0-10V DIMMING LED DRIVER | 35 | 0 MVOLT | |
| EL1 | FSC LIGHTING 11515-14W-655K-MQ | SURFACE MOUNTED CANOPY LIGHT, NOMINAL 15" SQUARE WITH STEEL HOUSING WITH BAKED WHITE FINISH, AND DIFFUSE LENS. IP65 AND 66 RATED. RECONNECT TO EXISTING CONTROLLED EXTERIOR LIGHTING CIRCUIT, WHERE INSTALLED SURFACE MOUNTED AT FLUTED METAL DECK. CONTRACTOR SHALL PROVIDE METAL FILL PIECES AT CAVITY TO PREVENT ACCESS ABOVE THE FIXTURE HOUSING. DO NOT USE BIRD SPIKES. | LED 1000 LUMEN 4000K 80+ CRI MIN 246,000 HR L70 | 0-10V DIMMING LED DRIVER | 14.8 | 0 MVOLT | |
| EL2 | LITHONIA BLWFP-100L-1000-30K-TFM-MVOLT-PIR-DNXXD OR APPROVED EQUAL | WALL MOUNTED FULL CUTOFF WALL MOUNTED FIXTURE, WITH CLEAR GLASS LENS, DIE CAST ALUMINUM HOUSING, INTEGRAL THERMAL RADIATION FIN, AND TEXTURED POLYESTER POWDERCOAT FINISH. INTEGRAL MOTION/AMBIENT LIGHT SENSOR, PROGRAMMED TO DIM TO 30% LIGHT OUTPUT WHEN NO MOTION IS DETECTED. BUG RATING IS 100%1. CONFIRM COLOR TEMP AND FINISH WITH EXISTING CAMPUS STANDARD. RECONNECT TO EXISTING CONTROLLED EXTERIOR LIGHTING CIRCUIT U.O.N. | LED 3,073 LUMEN 70 CRI 100,000 HR L88 | 0-10V DIMMING LED DRIVER | 39 | 0 MVOLT | |
| EL3 | SELUX NT-EXISTING BOLLARD BASE-1,04700-40-SV-277 | AT EXISTING SELUX NOTCH BOLLARD, REPLACE EXISTING FIXTURE HEAD INCLUDING DRIVER, LED, ASSEMBLY, DIFFUSER, ETC. PER MANUFACTURER'S INSTALLATION INSTRUCTIONS. | LED 1076 LUMEN 4000K 80+ CRI MIN 50,000 HR L80 | 0-10V DIMMING LED DRIVER | 14 | 0 MVOLT | |
| R1 | GREEN CREATIVE 38730P-01604WYFPF OR APPROVED EQUAL | CFL RETROFIT LAMP, GX24Q3 BASE, DIRET WIRE TO EXISTING FLUORESCENT BALLAST. | LED 1150 LUMEN 4000K 80+ CRI MIN 50,000 HR L80 | BALLAST | 9 | 0 MVOLT | |
| R2 | GREEN CREATIVE 9.5T8/2F/840/EXT + 15T8TSHEDRIVER/2CH/R OR APPROVED EQUAL | LED LAMP AND DRIVER SYSTEM, NOMINAL 24" LONG LAMPS, QUANTITY OF REPLACEMENT LED LAMPS TO MATCH EXISTING FLUORESCENT LAMPS | LED 1,500 LUMEN 4000K 80+ CRI MIN 50,000 HR L80 | LED DRIVER | 9.5 | 0 MVOLT | |
| R3 | GREEN CREATIVE 14T8/4F/840/EXT + 15T8TSHEDRIVER/2CH/R OR APPROVED EQUAL | LED LAMP AND DRIVER SYSTEM, NOMINAL 36" LONG LAMPS. | LED 1,600 LUMEN 4000K 80+ CRI MIN 50,000 HR L80 | LED DRIVER | 10.5 | 0 MVOLT | |
| R4 | GREEN CREATIVE 14T8/4F/840/EXT + 15T8TSHEDRIVER/2CH/R OR APPROVED EQUAL | LED LAMP AND DRIVER SYSTEM, NOMINAL 48" LONG LAMPS. | LED 2,050 LUMEN 4000K 80+ CRI MIN 50,000 HR L80 | LED DRIVER | 14 | 0 MVOLT | |
| R5 | ELB ELECTRONICS 10.5T8/2F/840/EXT + 15T8TSHEDRIVER/2CH/R OR APPROVED EQUAL | LED LAMP 2G11 BASE, COMPATIBLE WITH FLUORESCENT BALLAST | TYPE A LED 1,315 LUMEN 4000K 80+ CRI MIN 50,000 HR L80 | BALLAST | 17 | 0 MVOLT | |
| R6 | GREEN CREATIVE 14T8/4F/840/DIR OR APPROVED EQUAL | TYPE A LED RETROFIT LAMP, NOMINAL 48" LONG. | LED 2,200 LUMEN 4000K 80+ CRI MIN 50,000 HR L80 | LED DRIVER | 14 | 0 MVOLT | |
| R7 | GREEN CREATIVE 8T8/2F/840/DIR OR APPROVED EQUAL | TYPE A LED RETROFIT LAMP, NOMINAL 24" LONG. | LED 1,120 LUMEN 4000K 80+ CRI MIN 50,000 HR L80 | LED DRIVER | 8 | 0 MVOLT | |

NUMBERED PROJECT NOTES
DEMOLITION

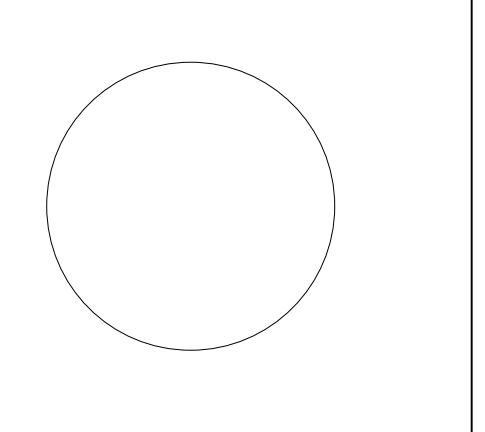
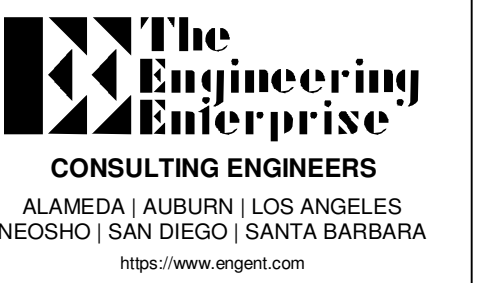
- 11 REMOVE EXISTING LUMINAIRES AS SHOWN, EXISTING CEILING SUPPORT WIRES (OR OTHER MOUNTING HARDWARE) AND POWER CONNECTIONS TO REMAIN FOR REUSE.
- 12 REMOVE EXISTING CEILING MOUNTED OCCUPANCY SENSORS, POWER PAKS, ETC., CLEAN AND PACKAGE, AND RETURN TO THE OWNER.
- 13 REMOVE EXISTING LINE VOLTAGE SWITCHES, LEAVING BOX AND WIRING FOR REPLACEMENT DEVICES.
- 14 EXISTING LIGHTING CONTROLS TO REMAIN.
- 15 SIMILAR TO NOTE D1, BUT EXISTING LIGHTING TO BE REMOVED AND REPLACED WITH NEW TYPE AT NEW LOCATION.
- 16 RETROFIT EXISTING LUMINAIRE AS SPECIFIED.

NUMBERED PROJECT NOTES NEW

- 17 RECONNECT NEW LUMINAIRES AT SAME LOCATION AS EXISTING LUMINAIRE TO EXISTING CEILING SUPPORT WIRES AND WIRING.
- 18 MAKE UP EXISTING WIRING AS REQUIRED TO BYPASS EXISTING LIGHTING CONTROLS, PROVIDE UNSWITCHED POWER TO NEW LUMINAIRES. CONTROLS ARE INTEGRAL TO THE LUMINAIRE.
- 19 INSTALL NEW LINE POWERED, WIRELESS CONTROL DEVICE(S) AT EXISTING SWITCH BOX. MAKE-UP WIRING AS REQUIRED TO PROVIDE UNSWITCHED LINE POWER FOR THE DEVICE. PROVIDE NEW DEVICE PLATE AND BLANKS AS REQUIRED.
- 20 RECONNECT TO EXISTING CONTROLS, WHERE APPLICABLE, TEST EXISTING AUTOMATIC CONTROLS TO ENSURE PROPER FUNCTION.
- 21 SIMILAR TO NOTE N5, BUT NEW LUMINAIRE IS AT NEW LOCATION. PROVIDE NEW CEILING SUPPORT WIRES PER SPECIFICATIONS. EXTEND EXISTING CONTROLLED CIRCUIT TO NEW LUMINAIRE LOCATION.
- 22 RETROFIT EXISTING LUMINAIRE AS SPECIFIED.

PROJECT GENERAL NOTES

1. ELECTRICAL SCOPE SHALL COMPLY WITH THE LATEST ADOPTED EDITIONS OF THE CALIFORNIA ELECTRIC CODE (CEC), CALIFORNIA BUILDING CODE (CBC), CALIFORNIA FIRE CODE (CFC), CALIFORNIA MECHANICAL CODE (CMC), NATIONAL FIRE PROTECTION ASSOCIATION (NFPA 72), THE CALIFORNIA ENERGY CODE, AND LOCAL REACH CODES.
2. THE CONTRACTOR SHALL VISIT THE JOBSITE AND VERIFY ALL EXISTING CONDITIONS PRIOR TO BIDDING THE PROJECT AND SHALL INCLUDE IN THEIR BID THE NECESSARY COSTS TO CONSTRUCT THIS PROJECT IN ACCORDANCE WITH THE ELECTRICAL DRAWINGS, SPECIFICATIONS, AND ALL APPLICABLE CODES.
3. DRAWINGS INDICATE GENERAL ARRANGEMENT OF ELECTRICAL SYSTEMS AND WORK. FOLLOW THE DRAWINGS IN LAYING OUT WORK AND VERIFY EXACT LOCATIONS WITH ARCHITECTURAL FLOOR PLAN AND RCP DRAWINGS. ALSO, CHECK DRAWINGS OF OTHER TRADES TO VERIFY LOCATIONS OF EQUIPMENT REQUIRING ELECTRICAL CONDITIONS AND COORDINATE SPACE CONDITIONS WITH THEIR INSTALLATION. FINAL LOCATIONS SHALL BE ADJUSTED TO MEET FIELD CONDITIONS.
4. NOT EVERY ELECTRICAL RACEWAY, BOX, CONDUCTOR, ETC., FOR A COMPLETE ELECTRICAL INSTALLATION IS SHOWN ON THESE DRAWINGS. THIS IS DONE FOR CLARITY PURPOSES AND EASE OF INTERPRETING DRAWINGS. PROVIDE ALL ADDITIONAL ITEMS REQUIRED TO MAKE THE ELECTRICAL SYSTEMS COMPLETE AND OPERATIONAL.
5. WORK PERFORMED UNDER THIS CONTRACT SHALL CONFORM TO THESE DRAWINGS THE ELECTRICAL SPECIFICATIONS. IN THE EVENT THAT THERE IS A DISCREPANCY BETWEEN THE DRAWINGS AND SPECIFICATIONS, THE MORE STRINGENT OF THE REQUIREMENTS SHALL TAKE PRECEDENT.
6. ALL NEW ELECTRICAL MATERIALS AND EQUIPMENT SHALL BE UNDERWRITER'S LABORATORIES (UL) LISTED OR ELECTRICAL TESTING LABORATORIES (ETL) LISTED AND BEAR THEIR LABELS.
7. ALL ELECTRICAL MATERIALS SHALL BE NEW AND UNUSED, AND THE SAME MANUFACTURER OF LIKE EQUIPMENT AND SYSTEMS.
8. CONTRACTOR SHALL REMOVE ALL LEFTOVER CONDUIT, WIRE, SCRAP, ETC. AND LEAVE PREMISES CLEAN AND FREE OF TRASH AND DEBRIS RESULTING FROM THEIR WORK.
9. FURNISH, INSTALL, AND CONNECT A CODE SIZED INSULATED OR BARE COPPER GROUND CONDUCTOR IN ALL BRANCH CIRCUITS AND FEEDER CONDUITS AND/OR MC CABLES.
10. ALL EQUIPMENT CONNECTED BY PERMANENT WIRING METHODS SHALL BE GROUNDED.
11. ALL CONDUCTORS ON THIS PROJECT SHALL BE COPPER.
12. MULTIWIRE BRANCH CIRCUITS SHALL BE PROVIDED WITH A MEANS TO SIMULTANEOUSLY DISCONNECT ALL UNGROUNDED CONDUCTORS AT THE POINT WHERE THE BRANCH CIRCUIT ORIGINATES, I.E. HANDLE TIES OR MULTIPOLE CIRCUIT BREAKERS.
13. ALL MULTIWIRE BRANCH CIRCUITS SHOWN WITH THREE (3) CONSECUTIVE PHASE CONDUCTORS (E.G., 1,3,5 OR 4,6,8), NONE SHARING THE SAME PHASE, SHALL INCLUDE A DEDICATED NEUTRAL CONDUCTOR, THREE (3) HOTS AND ONE (1) NEUTRAL, CUTTING OUT OF PHASE ORDER (E.G., 1,5,7 OR 4,6,10) WILL REQUIRE AN ADDITIONAL NEUTRAL CONDUCTOR, TWO (2) HOTS AND ONE (1) NEUTRAL PLUS ONE (1) HOT AND ONE (1) NEUTRAL.
14. BRANCH CIRCUIT CONDUCTOR HOMERUNS SHALL BE INSTALLED IN CONDUIT. MC TYPE CABLE SHALL NOT BE USED FOR ANY HOMERUNS ON THIS PROJECT.
15. WHERE MORE THAN THREE UNGROUNDED CONDUCTORS ARE ROUTED WITH A RACEWAY, THE CONTRACTOR SHALL APPLY THE DERATING FACTOR REQUIRED BY CODE.
16. PROVIDE INSULATING BUSHINGS OR INSULATED THROAT CONNECTORS AT BOTH ENDS OF ALL CONDUIT SLEEVES.
17. MAINTAIN A MINIMUM OF 12" BETWEEN ELECTRICAL RACEWAYS/MC CABLING AND LOW-VOLTAGE TELECOMMUNICATION SYSTEM CABLING.
18. ALL JUNCTION AND PULL BOXES SHALL BE SIZED PER CODE TO ACCOMMODATE NUMBER OF CONDUITS AND/OR CONDUCTORS ROUTED TO AND FROM BOXES.
19. ALL OUTDOOR ELECTRICAL EQUIPMENT SHALL BE WEATHERPROOF (NEMA 3R RATED, MINIMUM) AND LISTED FOR EXTERIOR APPLICATIONS.
20. WIRING SPACE IN PANELBOARDS, DISTRIBUTION BOARDS, SWITCHBOARDS, AND SWITCHGEAR SHALL BE DEDICATED TO CONDUCTORS TERMINATED IN THAT ENCLOSURE AND SHALL NOT BE USED AS FILL AND/OR SPICE BOXES FOR CONDUCTORS THAT TERMINATE IN OTHER ENCLOSURES.
21. PROVIDE PROTECTION FROM PHYSICAL DAMAGE FOR ALL ELECTRICAL EQUIPMENT, LUMINAIRES, WIRING DEVICES, ETC., DURING THE CONSTRUCTION OF THE PROJECT.
22. MOUNTING HEIGHTS OF ALL WIRING DEVICES ARE DIMENSIONED TO THE CENTER OF THE DEVICE, UNLESS OTHERWISE NOTED.
23. ALL LINE VOLTAGE WIRING DEVICES AND JUNCTION BOX COVERS SHALL HAVE TYPE-ON-TAPE LABELS INDICATING THE PANELBOARD AND CIRCUIT NUMBER(S) SERVING EACH DEVICE.
24. CONTRACTOR SHALL CONFIRM THAT ALL LUMINAIRES SPECIFIED WITH TRIMS AND FRAMES ARE COMPATIBLE WITH THE ASSOCIATED CEILING TYPES, PRIOR TO PREPARING SUBMITTAL.
25. LUMINAIRES MOUNTED IN CONTINUOUS ROWS SHALL BE THROUGH-WIRED WITH FIXTURE INTERNAL WIREWAY CHASE WITH CIRCUITS AND CONTROLS AS NOTED ON DRAWINGS. LUMINAIRES NOT LISTED FOR THROUGH-WIRING SHALL BE WIRED WITH SEPARATE RACEWAY AND WIRING EXTERNAL TO THE LIGHTING FIXTURES.
26. WHERE 0-10V LIGHTING CONTROL WIRING IS ROUTED WITHIN SAME CONDUIT AS LINE-VOLTAGE PHASE CONDUCTORS, THE CONTROL WIRING SHALL BE 600VOLT RATED TO MATCH CONDUCTORS.
27. THE SUBSCRIPT AT LIGHTING CONTROL DEVICES ("4" FOR EXAMPLE) DENOTES THE LUMINAIRE(S) CONTROLLED, WHICH IS ALSO FOUND ADJACENT TO THE CIRCUIT NUMBER AT EACH LUMINAIRE CONTROLLED BY DEVICE.
28. EXISTING CONDITIONS SHOWN ON THE PLANS ARE BASED ON RECORD DRAWINGS AND PRELIMINARY WALK OF THE JOBSITE; NOT ALL EXISTING CONDITIONS HAVE BEEN VERIFIED. WHERE PLANS VARY FROM EXISTING CONDITIONS, CONTRACTOR SHALL APPLY THE SAME LIGHTING REPLACEMENT/RETROFIT AND MODIFICATION OF CONTROLS TO MATCH SIMILAR EXISTING CONDITIONS SHOWN ON THE PLANS, USING PRODUCT FROM ATTIC STOCK, WHERE LED UPGRADE SIMILAR TO THE DESIGN INTENT HAS ALREADY OCCURRED AND IS NOT SHOWN ON THE PLANS, OMIT THE NEW WORK FROM SCOPE AND RETURN UNUSED PRODUCT TO ATTIC STOCK.
29. IN GENERAL, SCOPE OF WORK INCLUDES LED RETROFIT OF EXISTING LUMINAIRES, OR ONE-FOR-ONE REPLACEMENT OF EXISTING LUMINAIRE WITH NEW LED LUMINAIRE. IN THESE CASES, CONTRACTOR SHALL RE-USE EXISTING MOUNTING HARDWARE, STRUCTURAL ATTACHMENTS (I.E. CEILING SUPPORT WIRES, BLOCKING, ETC.), IN SOME AREAS, THE SCOPE OF WORK MAY INCLUDE NEW LUMINAIRE IN PLACE OF A DIFFERENT TYPE OF LUMINAIRE, IN A DIFFERENT LOCATION OR CONFIGURATION, WHERE NEW CEILING SUPPORT WIRES ARE REQUIRED. CONTRACTOR SHALL INSTALL PER OSHPD PREAPPROVED DETAILS OPD-0009-19 AS THEY APPLY TO EXISTING BUILDING CONDITIONS. STANDARD DETAILS CAN BE FOUND AT <https://hcai.ca.gov/facilities/buildings-safety/preapproval-programs/opd/>
30. WHERE EXISTING INDIRECT/DIRECT LUMINAIRES ARE RETROFIT WITH NEW LED LAMP, CONTRACTOR SHALL MOCK-UP WITH LAMP FACED UP WITH LAMP AND PRESENT TO THE OWNER'S REPRESENTATIVE. AT THE OWNER'S DISCRETION, PROCEED WITH INSTALLATION WITH LAMPS FACED DOWN, OR PRESENT OPTION WITH LAMPS FACED UP.
31. WHERE EXISTING SURFACE (WALL OR CEILING) MOUNTED LUMINAIRES REPLACE EXISTING LUMINAIRES THAT ARE NOT THE SAME SIZE, THE FINISHED SURFACE BEHIND THE EXISTING LUMINAIRE IS TO BE PAINTED TO MATCH THE EXISTING FINISHED SURFACE. THE CONTRACTOR SHALL SUB-CONTRACT WITH THE DISTRICT'S APPROVED PAINTER, POLYCHROME CONSTRUCTION, INC. (818) 831-8306, info@polychromepainting.com
32. WHERE EXISTING LUMINAIRE THAT IS SHOWN ON THE PLANS TO BE EMERGENCY OR BATTERY BACK-UP IS TO BE RETROFIT WITH LED LAMPS (TYPE A OR TYPE C), CONTRACTOR SHALL REPLACE THE EXISTING BATTERY PACK WITH NEW BATTERY PACK COMPATIBLE WITH THE RETROFIT SYSTEM, FLUHAM EM DRIVER OR EQUIVALENT.



Lake County Districtwide Lighting

REVISIONS

| # | DESCRIPTION | DATE |
|---|-------------|------|
| | | |
| | | |
| | | |

DESIGNER: TEE

SCALE: NTS

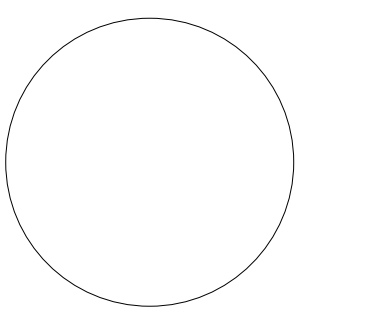
DATE: 2024-02-29

TITLE:

NOTES & SCHEDULES

DRAWING NO.

E0.02

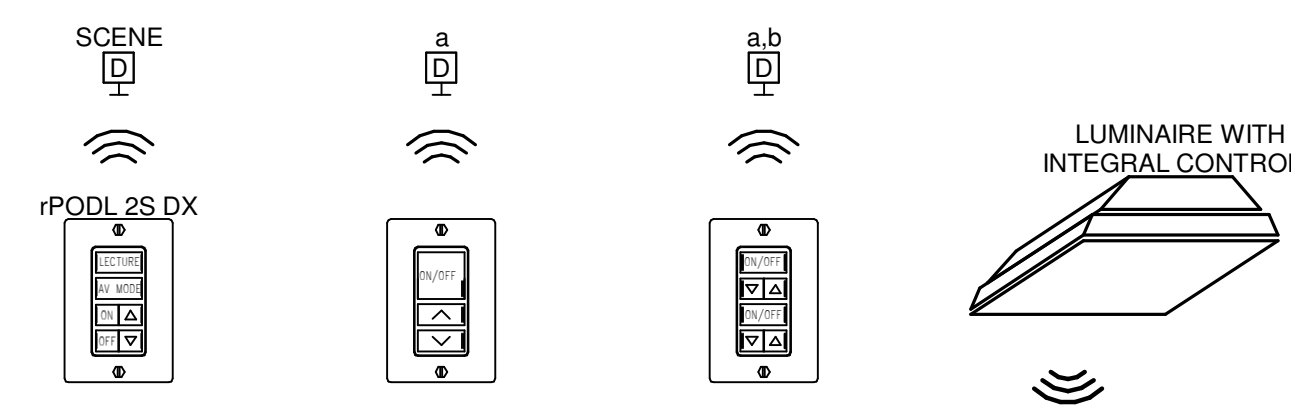


GENERAL SHEET NOTES

- A. AT BUILDINGS 400, 801, AND 900 PORTABLES ONLY, PROVIDE STAND-ALONE (ROOM BASED) WIRELESS LIGHTING CONTROLS, CONSISTING OF LINE-POWERED DEVICES, LUMINAIRE-INTEGRATED CONTROLS (OCCUPANCY SENSORS, DAYLIGHT SENSORS) ETC. BASIS OF DESIGN IS LIGHT AIR TO MATCH RECENT INSTALLATIONS ON CAMPUS. SUBSTITUTIONS ONLY WITH DIRECT PERMISSION FROM THE OWNER.
- B. CONTRACTOR SHALL PROVIDE COMPLETE SHOP DRAWINGS FOR ALL LIGHTING CONTROLS, TO INCLUDE PRODUCT DATA SHEETS, DETAILED ROOM BY ROOM CONTROL DIAGRAMS, AND COMPLETE SEQUENCE OF CONTROL OPERATIONS.
- C. CONTROL DIAGRAMS HAVE BEEN PROVIDED TO CONVEY GENERAL DESIGN INTENT. PROVIDE ALL COMPONENTS, SOFTWARE & PROGRAMMING, CABLING, ETC. AS REQUIRED TO PROVIDE A FULLY FUNCTIONAL SYSTEM MEETING THE DESIGN INTENT AS SHOWN ON THE PLANS.
- D. NOT ALL COMPONENTS OF THE LIGHTING CONTROL SYSTEM AS SHOWN ON THE PLANS; CONTRACTOR SHALL PROVIDE ALL COMPONENTS REQUIRED FOR A COMPLETE AND FUNCTIONAL SYSTEM. ALL COMPONENTS SHALL BE LOCATED IN ACCESSIBLE CEILING SPACE WHERE EASILY SERVICEABLE WITHOUT MOVING FURNITURE. USE TYPE ON-TAPE LABELS ON GRID CEILING RUNNERS TO IDENTIFY LOCATION OF POWER-PACKS AND OTHER COMPONENTS CONCEALED IN ACCESSIBLE CEILING SPACE. IF THE ROOM CEILING IS NOT ACCESSIBLE, LOCATE IN ADJACENT ROOM ACCESSIBLE CEILING SPACE AND DENOTE LOCATION ON THE RECORD DRAWINGS.
- E. BASIS OF DESIGN DOES NOT REQUIRE 0-10V WIRING OR NETWORK CABLING BETWEEN A MAJORITY OF THE COMPONENTS. SUBSTITUTIONS THAT REQUIRE ADDITIONAL WIRING MUST INCLUDE INSTALLATION OF WIRING IN CONDUIT AT NO ADDITIONAL COST.
- F. LIGHTING CONTROL DEVICE ATTIC STOCK - PROVIDE THE FOLLOWING ADDITIONAL COMPONENTS AS ATTIC STOCK, TO BE TURNED OVER TO THE OWNER UPON COMPLETION OF THE PROJECT. IN ADDITION, THE CONTRACTOR SHALL INCLUDE INSTALLATION/PROGRAMMING OF THESE COMPONENTS IN THE BID, TO ACCOMMODATE POTENTIAL DISCREPANCIES BETWEEN THE CONSTRUCTION DOCUMENTS AND ACTUAL CONDITIONS IN THE FIELD:
 LINE-POWERED WIRELESS DIMMER SWITCHES: 5 SINGLE ZONE, 5 DUAL ZONE
 BATTERY-POWERED WIRELESS DIMMER SWITCHES: 2 SINGLE ZONE, 2 DUAL ZONE
 WIRELESS POWER-PACKS: 5 FOR LIGHTING
 WIRELESS CEILING SENSORS: 5 MOTION SENSORS, 2 DAYLIGHT SENSORS
 LINE VOLTAGE WALLBOX SENSORS: 5 SINGLE RELAY, 10 DUAL RELAY
- G. WHERE EXISTING LINE VOLTAGE SWITCHES ARE TO BE REMOVED AND REPLACED WITH NEW LINE-POWERED WIRELESS DIMMER SWITCH; NOTE THAT NEW DEVICE REQUIRES NEUTRAL CONDUCTOR. UTILIZE EXISTING NEUTRAL CONDUCTOR IF PRESENT. IF NOT PRESENT, AND EXISTING DEVICE IS WIRE WITH MC CABLE, CONTRACTOR SHALL RE-PURPOSE THE SWITCH LEG WIRE AS A NEUTRAL, MARK PER CEC 200.6(E), AND MAKE-UP WIRING ABOVE THE CEILING AS REQUIRED. IF DEVICE IS CONNECTED WITH CONDUIT AND WIRE, CONTRACTOR SHALL REMOVE THE SWITCH LEG CONDUCTOR AND REPLACE WITH NEW NEUTRAL CONDUCTOR PER CEC 200.7(A). FOR BID PURPOSES, ASSUME THE LATTER.

LIGHTING CONTROL SEQUENCE OF OPERATION

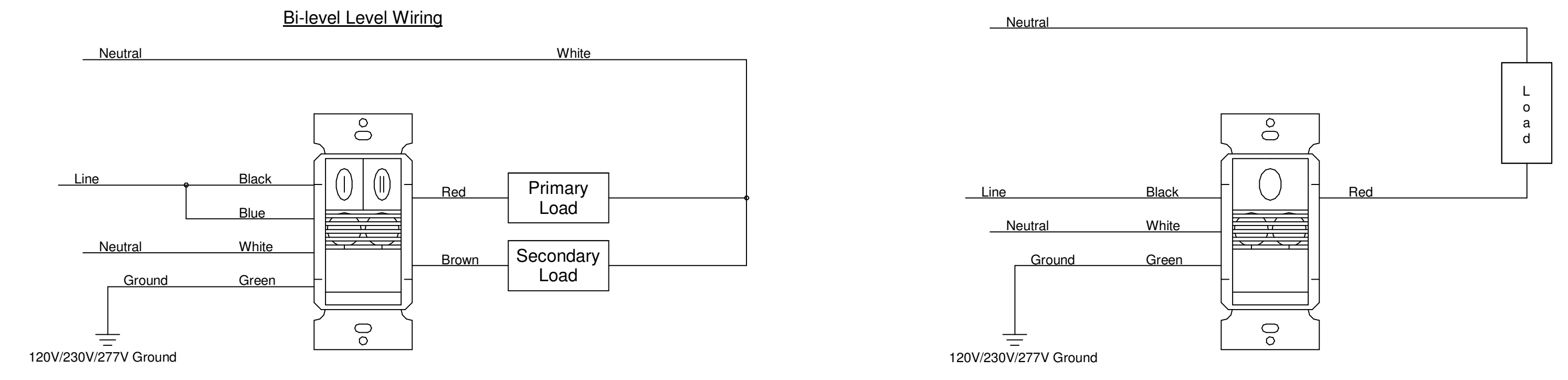
- 1. LUMINAIRES SHALL BE GROUPED TOGETHER FOR SENSOR CONTROL IN EACH SPACE. COMBINATIONS OF LUMINAIRE-INTEGRATED AND STAND-ALONE SENSORS ARE PROVIDED.
- 2. DURING EMERGENCY CONDITIONS, MOTION SENSOR AND USER CONTROLS SHALL BE DISABLED.
- 3. PUBLIC ACCESS CORRIDORS AND OPEN STUDY AREAS:
 SENSORS SHALL BE SET TO AUTOMATIC ON. SHOULD ANY SENSOR WITHIN THE CORRIDOR SENSE MOVEMENT, ALL CORRIDOR LIGHTING SHALL ACTIVATE TO 100%.
 CORRIDOR TIME DELAY SHALL BE SET TO 10 MINUTES.
 UNOCCUPIED SETTING AT 10% OUTPUT.
- 4. RESTROOMS:
 SENSORS SHALL BE SET TO AUTOMATIC ON. SHOULD ANY SENSOR WITHIN THE RESTROOM SENSE MOVEMENT, ALL RESTROOM LIGHTING SHALL ACTIVATE TO 100%.
 RESTROOM TIME DELAY SHALL BE SET TO 20 MINUTES.
 UNOCCUPIED SETTING AT 10% OUTPUT.
- 5. CLASSROOMS:
 SENSORS SHALL BE SET TO MANUAL ON, AUTOMATIC OFF. UPON ACTIVATION, CLASSROOM LIGHTING SHALL ACTIVATE TO 80%.
 CLASSROOM TIME DELAY SHALL BE SET TO 20 MINUTES.
 UNOCCUPIED SETTING AT FULL OFF.
- 6. STAFF OFFICES, WORKROOMS, CORRIDORS, AND RECEPTION AREAS:
 SENSORS SHALL BE SET TO MANUAL ON, AUTOMATIC OFF. UPON ACTIVATION, LIGHTING SHALL ACTIVATE TO 80%.
 TIME DELAY SHALL BE SET TO 20 MINUTES.
 UNOCCUPIED SETTING AT FULL OFF.
- 7. OPEN OFFICES
 SENSORS SHALL BE SET TO MANUAL ON, AUTOMATIC OFF. UPON ACTIVATION, LIGHTING SHALL ACTIVATE TO 80%.
 TIME DELAY SHALL BE SET TO 20 MINUTES.
 UNOCCUPIED SETTING AT 10% OUTPUT.



- TYPICAL SINGLE ZONE, DUAL ZONE SPACES:**
- 1. AUTOMATIC ON TO 35FC MEASURED AT DESK; USER MAY MANUALLY RAISE/LOWER.
 - 2. OCCUPANCY SENSORS CONTROL ALL FIXTURES IN ROOM AS ONE ZONE, TIME DELAY 10 MIN.
 - 3. DAYLIGHT SENSOR CONTROLS EACH FIXTURE INDIVIDUALLY, SETPOINT 35FC.
 - 4. SCENE CONTROL: LECTURE MODE - ALL ZONES TO PROVIDE 35FC AT WORK SURFACE. AV MODE - TURN OFF ZONE CLOSEST TO THE AV SOURCE, DIM REMAINING TO 20%.

1 STAND-ALONE WIRELESS LIGHTING CONTROL SYSTEM

SCALE: NTS



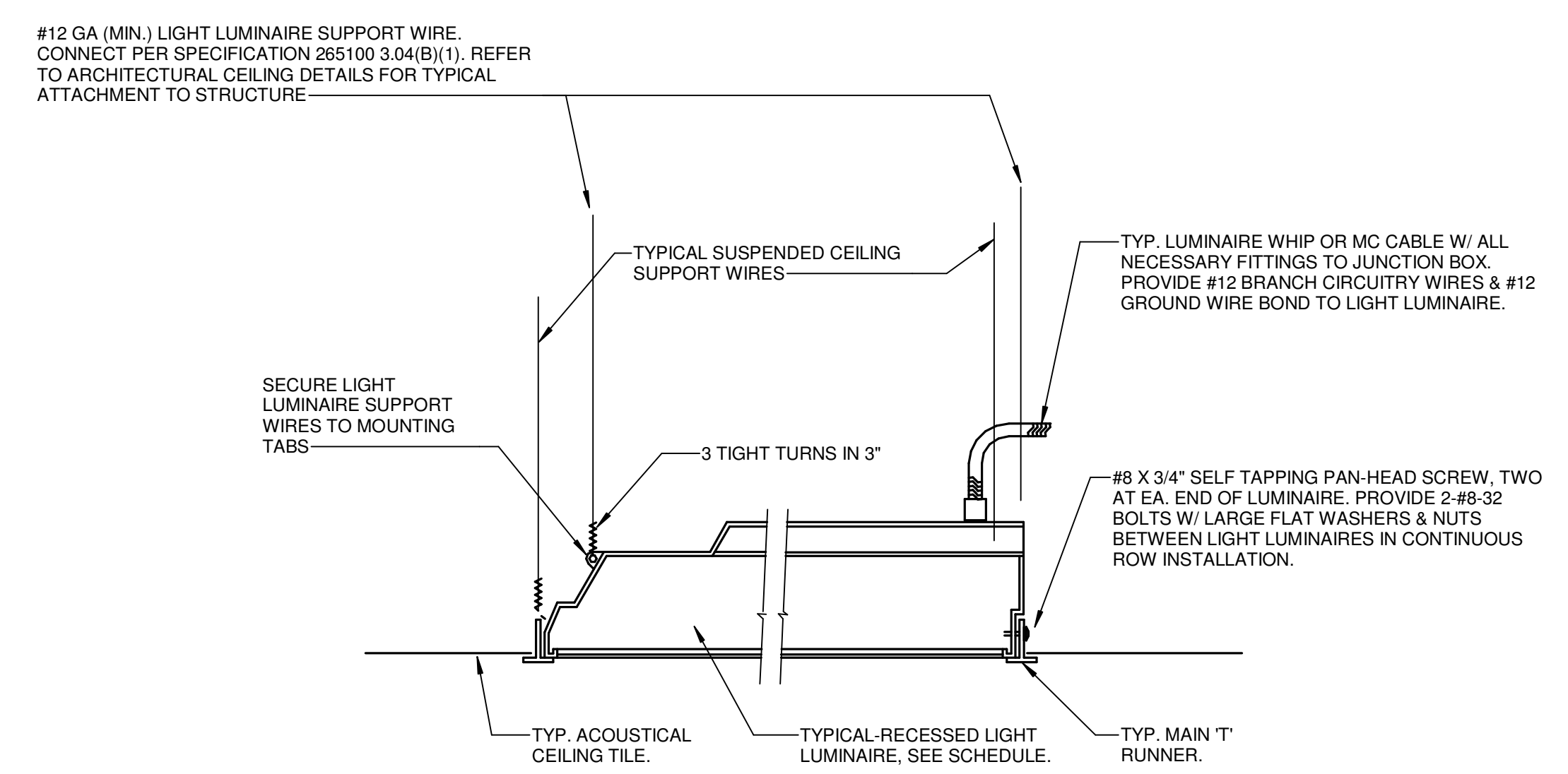
DUAL RELAY WALL MOUNTED DUAL-TECHNOLOGY OCCUPANCY SENSOR
 Typical at private offices, small conference rooms, etc.
 Primary load (switchleg 'a') is automatic on, automatic off.
 Secondary load (switchleg 'b') is manual on, automatic off.
 Set up light level sensor in any room with available daylight.

SINGLE RELAY WALL MOUNTED DUAL-TECHNOLOGY OCCUPANCY SENSOR
 Typical at storage rooms, custodial rooms, etc.
 Primary load (switchleg 'a') is automatic on, automatic off.
 Set up light level sensor in any room with available daylight.

NOTE:
 ALL SINGLE AND DUAL RELAY LINE VOLTAGE WALLBOX SENSORS, SHOWN AS EXISTING ON THE PLANS, ARE TO BE REPLACED WITH NEW DEVICES TO MEET SPECIFICATION REQUIREMENTS. PROVIDE NEW DEVICE PLATE AS REQUIRED.

2 WALLBOX OCCUPANCY SENSOR WIRING DIAGRAM

SCALE: NTS



3 RECESSED LUMINAIRE AT T-BAR CEILING

SCALE: NTS

| REVISIONS | |
|-----------|--|
| | |
| | |
| | |
| | |
| | |

| # | DESCRIPTION | DATE |
|---|---------------|------------|
| 1 | ADDITIONAL #1 | 04/04/2024 |

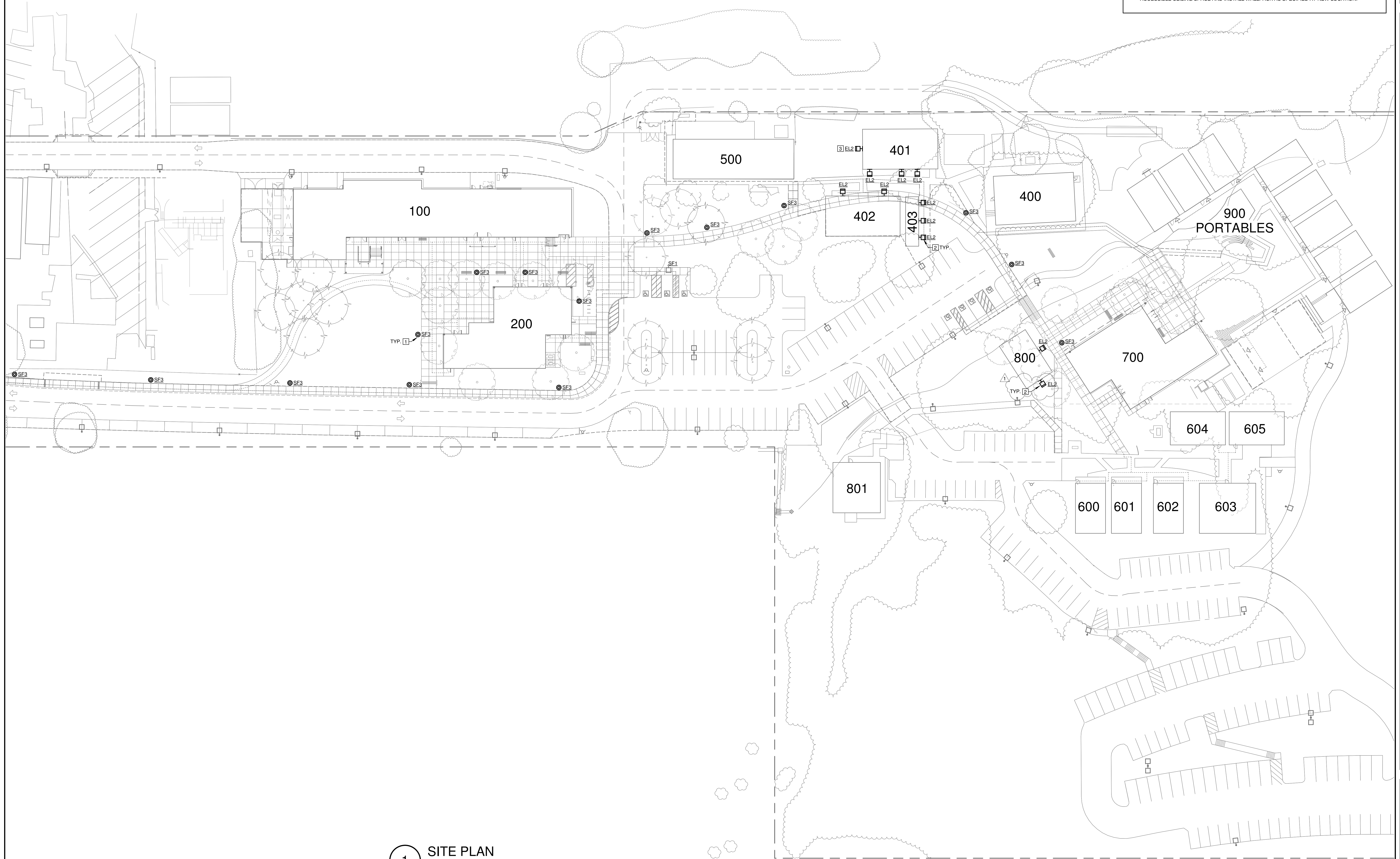
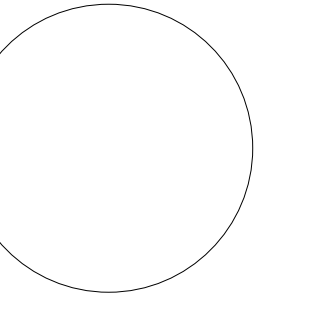
DESIGNER: TEE
 SCALE: NTS
 DATE: 2024-02-29
 TITLE:
LIGHTING CONTROL DETAILS
 DRAWING NO.
E0.03

GENERAL SHEET NOTES

- A. SITE LIGHTING SCOPE OF WORK: REPLACE EXISTING LED BOLLARDS WITH NEW LED POLE MOUNTED AREA LIGHTS. PARKING LOT LIGHTING IS SHOWN FOR REFERENCE ONLY.
- B. REFER TO BUILDING PLANS FOR BUILDING MOUNTED EXTERIOR LIGHTING, EXCEPT BUILDINGS 401, 402, 403 AND 800, WHICH IS SHOWN ON THESE PLANS.

NUMBERED SHEET NOTES

- 1 TYPICAL. REPLACE BOLLARD "HEAD" WITH NEW COMPONENTS, INCLUDING BUT NOT LIMITED TO LED ARRAY, DRIVER, DIFFUSER, ETC. INSTALL PER MANUFACTURER'S INSTALLATION INSTRUCTIONS.
- 2 REPLACE EXISTING WALLPACK AT MODULAR BUILDING WITH NEW, AS SPECIFIED. RECONNECT TO EXISTING LIGHTING CIRCUIT.
- 3 AT THIS LOCATION ONLY. EXTEND EXISTING CONTROLLED EXTERIOR LIGHTING CIRCUIT IN ACCESSIBLE CEILING SPACE AND INSTALL WALLPACK AS SPECIFIED AT NEW LOCATION.



1 SITE PLAN
 SCALE: 1" = 30'-0"

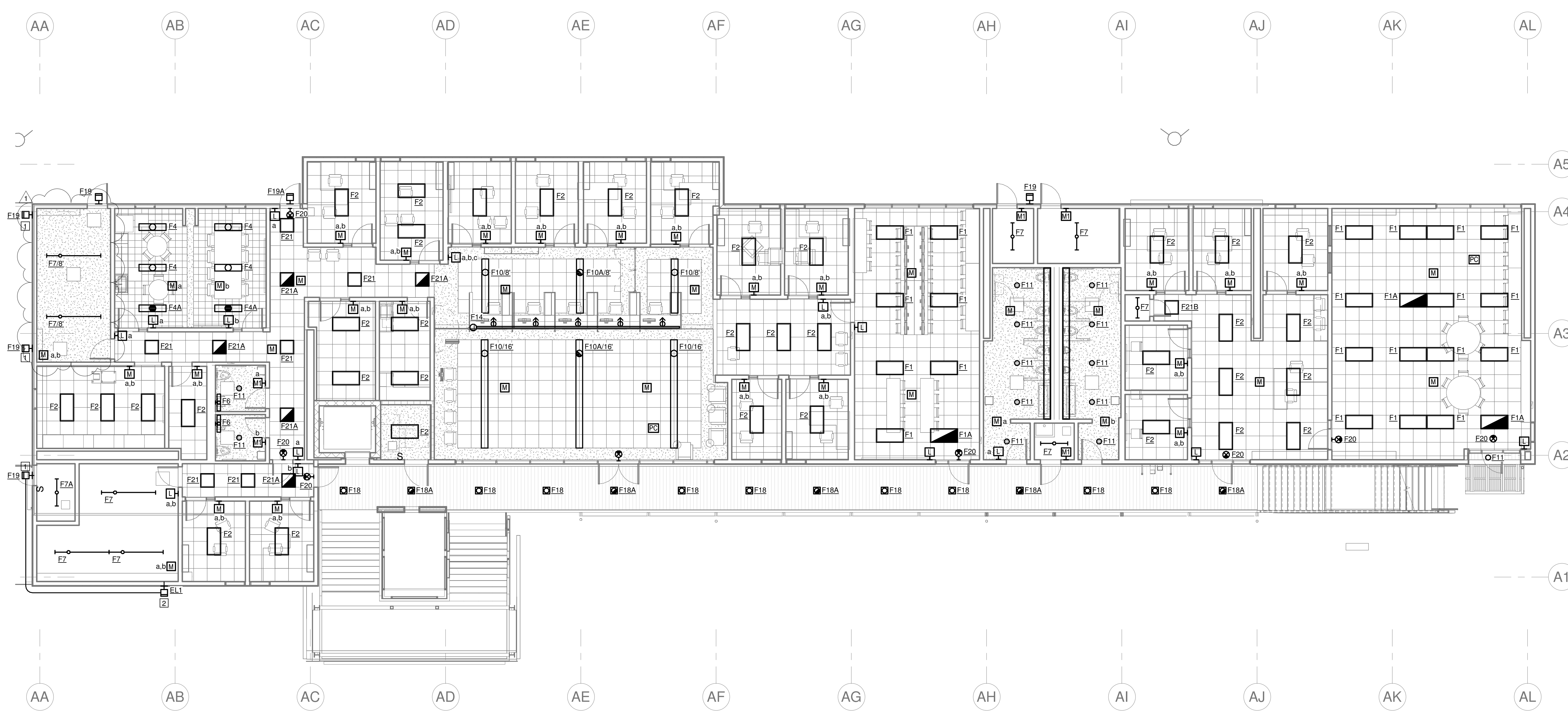
Lake County Districtwide Lighting

REVISIONS

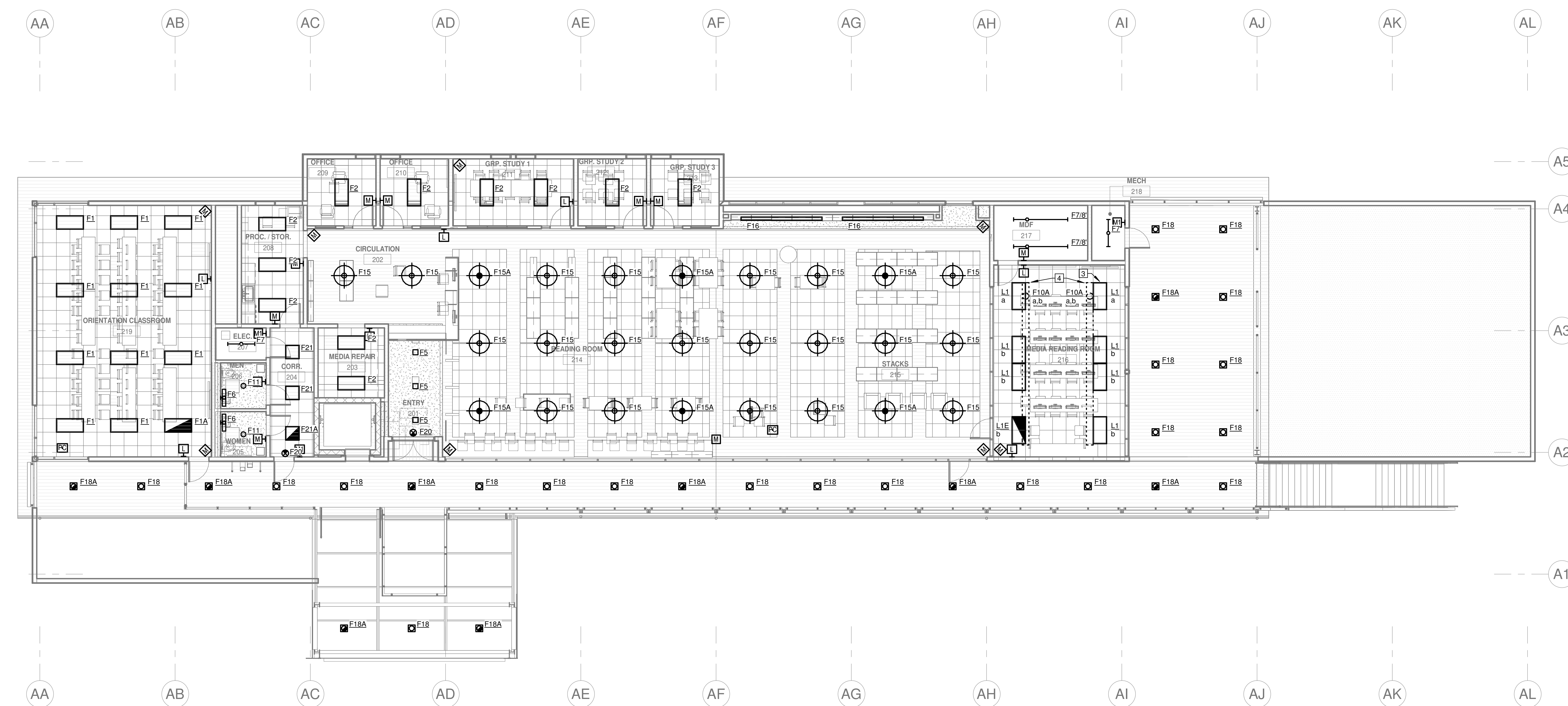
| # | DESCRIPTION | DATE |
|---|-------------|------|
| | | |
| | | |
| | | |
| | | |

DESIGNER: TEE
 SCALE: 1" = 30'-0"
 DATE: 2024-02-29
 TITLE: **SITE PLAN**

DRAWING NO.
E1.0



1 LEVEL 01 - BUILDING 100 LIGHTING
SCALE: 1/8" = 1'-0"



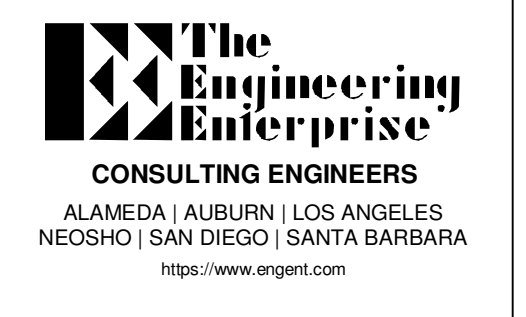
2 LEVEL 02 - BUILDING 100 LIGHTING
SCALE: 1/8" = 1'-0"

GENERAL SHEET NOTES

- A. EXISTING LIGHTING CONTROLS ARE TO REMAIN AS INSTALLED, U.O.N. THIS INCLUDES LINE VOLTAGE CONTROLS, AND THE EXISTING DIGITAL LIGHTING CONTROL SYSTEM, SQUARE D / SCHNEIDER ELECTRIC CLPSAL C-BUS. CONTRACTOR SHALL PROVIDE FACTORY START-UP SERVICES FOR ALL EXISTING LIGHTING CONTROLS AFTER LIGHTING UPGRADE IS COMPLETE. EXISTING SHOP DRAWINGS FOR INITIAL INSTALLATION OF LIGHTING CONTROL SYSTEM ARE AVAILABLE UPON REQUEST.
- B. REFER TO EXISTING LUMINAIRE SCHEDULE FOR BUILDINGS 100, 200, & 700 FOR A GENERAL DESCRIPTION OF EXISTING LUMINAIRES. AS-BUILTS AND APPROVED SUBMITTALS ARE AVAILABLE UPON REQUEST IF ADDITIONAL INFORMATION ON EXISTING LUMINAIRE TYPES IS REQUIRED. NEW WORK (REPLACEMENT, RETROFIT, ETC.) IS CROSS REFERENCED FOR EACH TYPE ON THE SCHEDULE.

NUMBERED SHEET NOTES

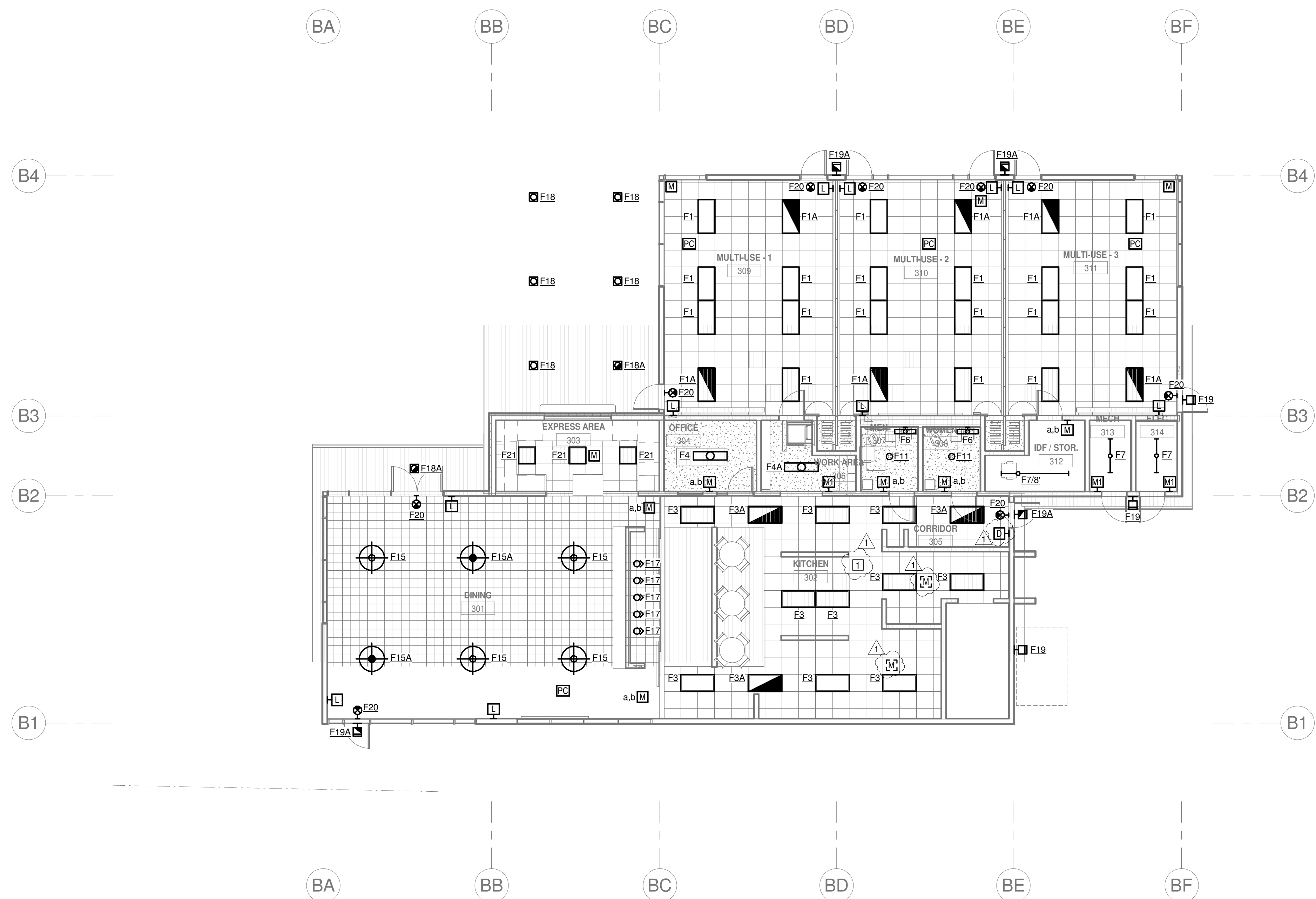
- 1. EXISTING LED LUMINAIRE TO REMAIN AT THIS LOCATION, DO NOT REPLACE.
- 2. NEW LUMINAIRE, EXTEND EXISTING CONTROLLED LIGHTING CIRCUIT FROM NEAREST EXISTING EXTERIOR WALLPACK AS SHOWN. MOUNTING HEIGHT IMMEDIATELY BELOW THE FIRST FLOOR STRUCTURAL CEILING.
- 3. INSTALL NEW RECESSED LED TROFFER IN EXISTING GRID CEILING. PROVIDE NEW 12GA HANGER WIRES FROM STRUCTURE ABOVE TO DIAGONAL CORNERS OF TROFFER. RECONNECT EXISTING CONTROLLED LIGHTING CIRCUIT TO NEW LUMINAIRES, EXTEND IN MC CABLE ABOVE THE ACCESSIBLE CEILING AS REQUIRED. WHERE PROPOSED NEW LOCATION IS NOT VIABLE DUE TO CONFLICT WITH EXISTING CONDITIONS (HVAC REGISTER, SPRINKLER PIPE) CONTRACTOR MAY RELOCATE A LUMINAIRE OR ROW OF LUMINAIRES 1 GRID SPACE AWAY AT THEIR DISCRETION.
- 4. REMOVE EXISTING PENDANT LUMINAIRES; EXISTING LIGHTING CIRCUIT AND LIGHTING CONTROLS TO REMAIN FOR RE-USE.



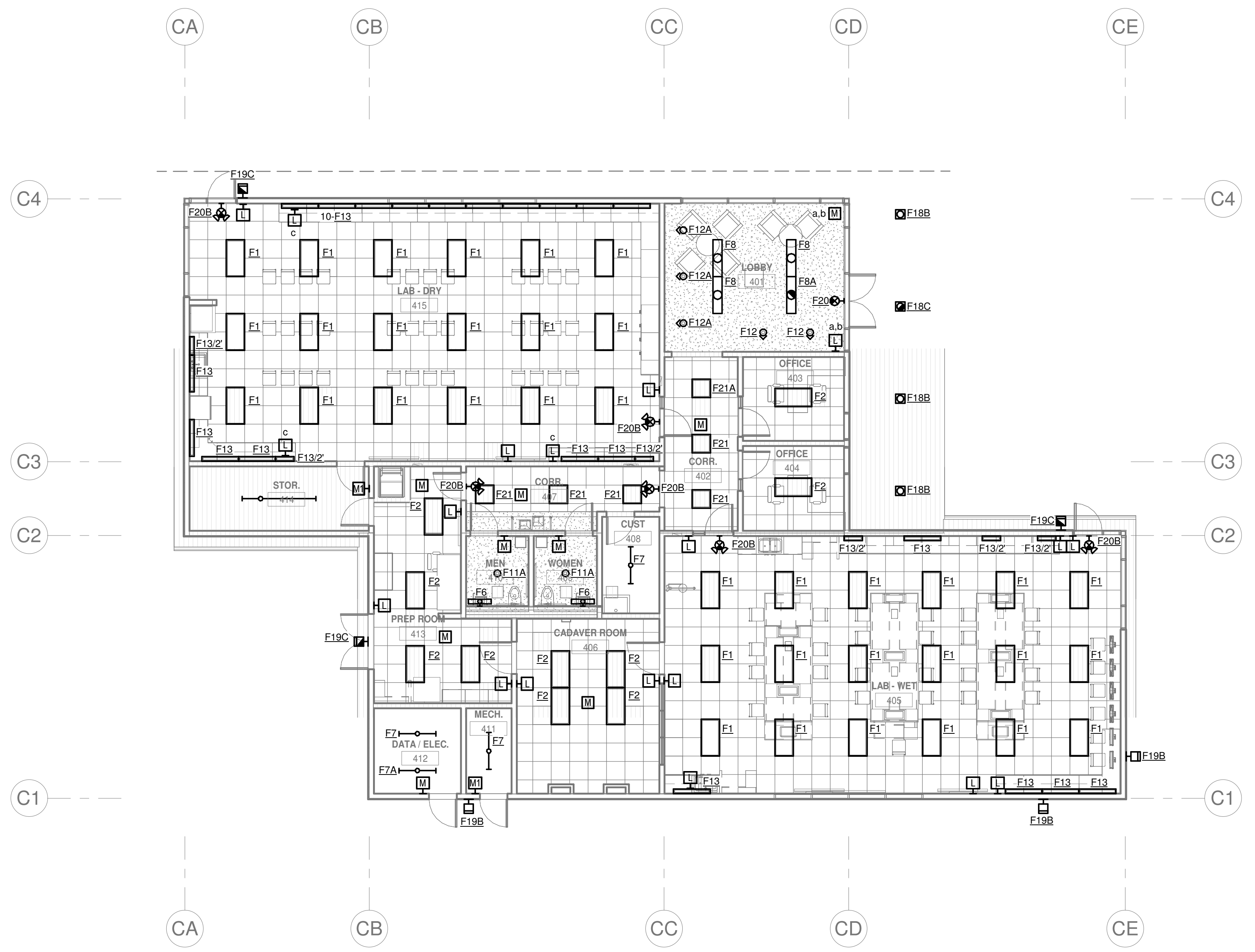
Lake County Districtwide Lighting

| REVISIONS | |
|-----------|-------------|
| # | DESCRIPTION |
| | |
| | |
| | |

DESIGNER: TEE
SCALE: 1/8" = 1'-0"
DATE: 2024-02-29
TITLE: LEVEL 1 LIGHTING PLAN - BUILDING 100
DRAWING NO. E2.1



1 LEVEL 01 - BUILDING 200 LIGHTING
SCALE: 1/8" = 1'-0"



2 LEVEL 01 - BUILDING 700 LIGHTING
SCALE: 1/8" = 1'-0"

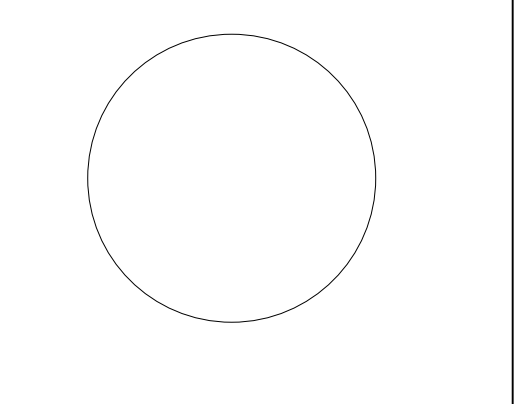
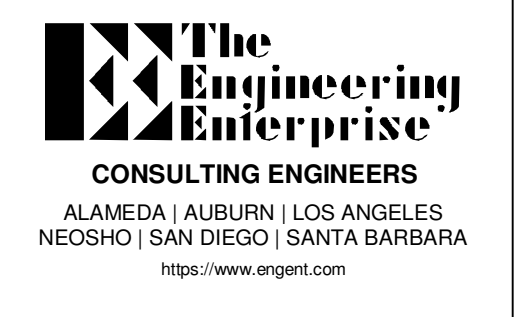
GENERAL SHEET NOTES

A. EXISTING LIGHTING CONTROLS ARE TO REMAIN AS INSTALLED, U.O.N. THIS INCLUDES LINE VOLTAGE CONTROLS, AND THE EXISTING DIGITAL LIGHTING CONTROL SYSTEM, SQUARE D / SCHNEIDER ELECTRIC CLPSAL C-BUS. CONTRACTOR SHALL PROVIDE FACTORY START-UP SERVICES FOR ALL EXISTING LIGHTING CONTROLS AFTER LIGHTING UPGRADE IS COMPLETE. EXISTING SHOP DRAWINGS FOR INITIAL INSTALLATION OF LIGHTING CONTROL SYSTEM ARE AVAILABLE UPON REQUEST.

B. REFER TO EXISTING LUMINAIRE SCHEDULE FOR BUILDINGS 100, 200, & 700 FOR A GENERAL DESCRIPTION OF EXISTING LUMINAIRES. AS-BUILTS AND APPROVED SUBMITTALS ARE AVAILABLE UPON REQUEST IF ADDITIONAL INFORMATION ON EXISTING LUMINAIRE TYPES IS REQUIRED. NEW WORK (REPLACEMENT, RETROFIT, ETC.) IS CROSS REFERENCED FOR EACH TYPE ON THE SCHEDULE.

NUMBERED SHEET NOTES

1 REMOVE EXISTING LIGHTING CONTROLS FROM THIS SPACE (REMOVE AND BYPASS EXISTING "ROOM CONTROLLER", WALL CONTROLS, AND CEILING SENSORS), AND PROVIDE NEW WIRELESS DIMMING LIGHTING CONTROLS, INCLUDING NEW LED LUMINAIRES WITH INTEGRAL SENSORS, WIRELESS GATEWAY, AND WALL DIMMER SWITCH AT EXISTING LOCATION.

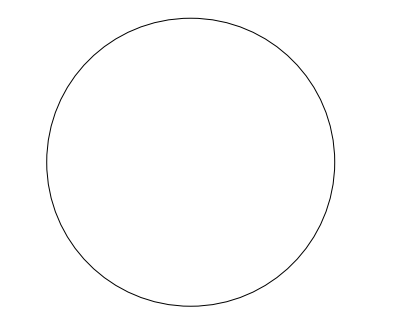


Lake County Districtwide Lighting

REVISIONS

| # | DESCRIPTION | DATE |
|---|-------------|------|
| | | |
| | | |
| | | |
| | | |
| | | |

DESIGNER:TEE
SCALE: 1/8" = 1'-0"
DATE:2024-02-29
TITLE:
LEVEL 1 LIGHTING PLAN - BUILDINGS 200 & 700
DRAWING NO.
E2.2

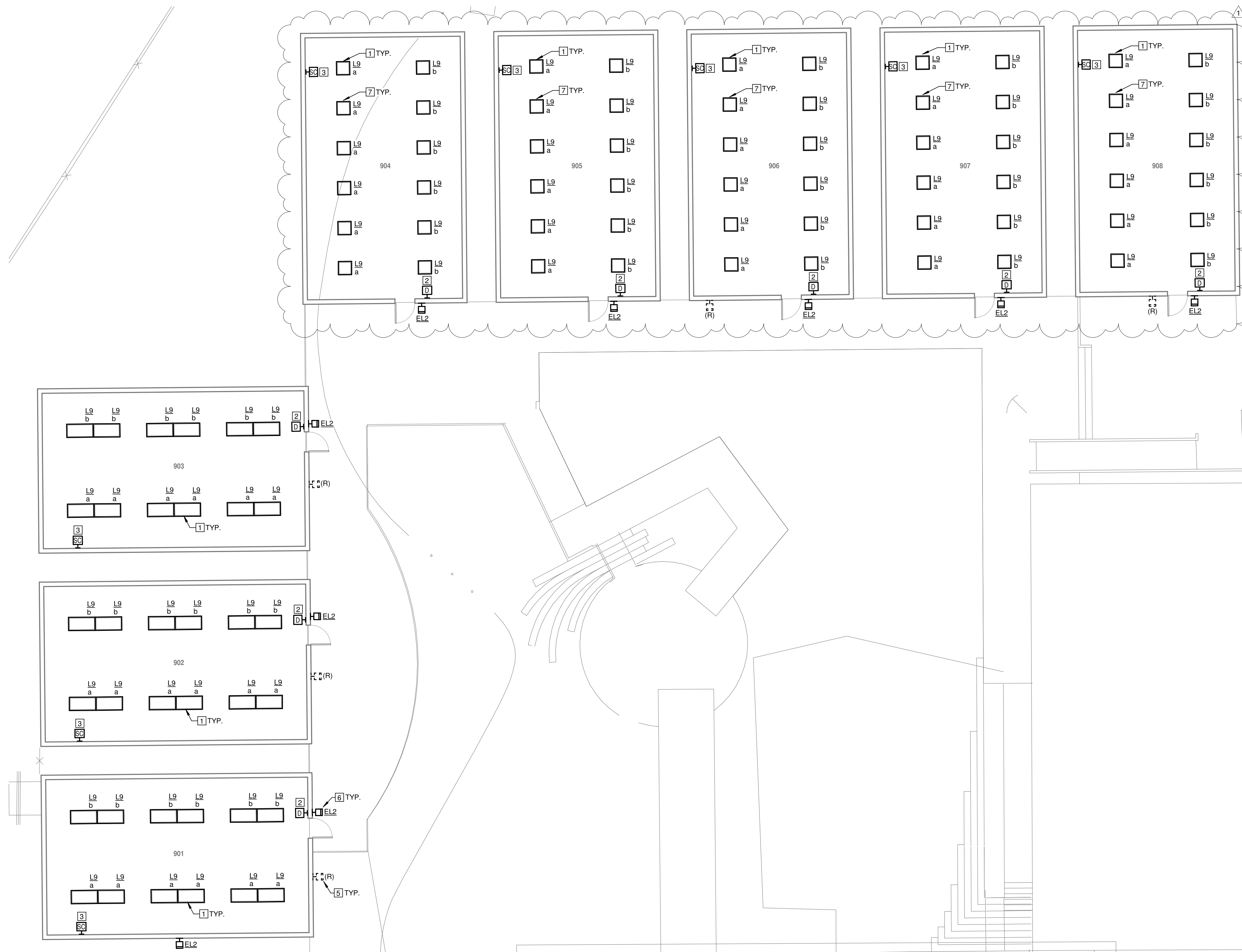


GENERAL SHEET NOTES

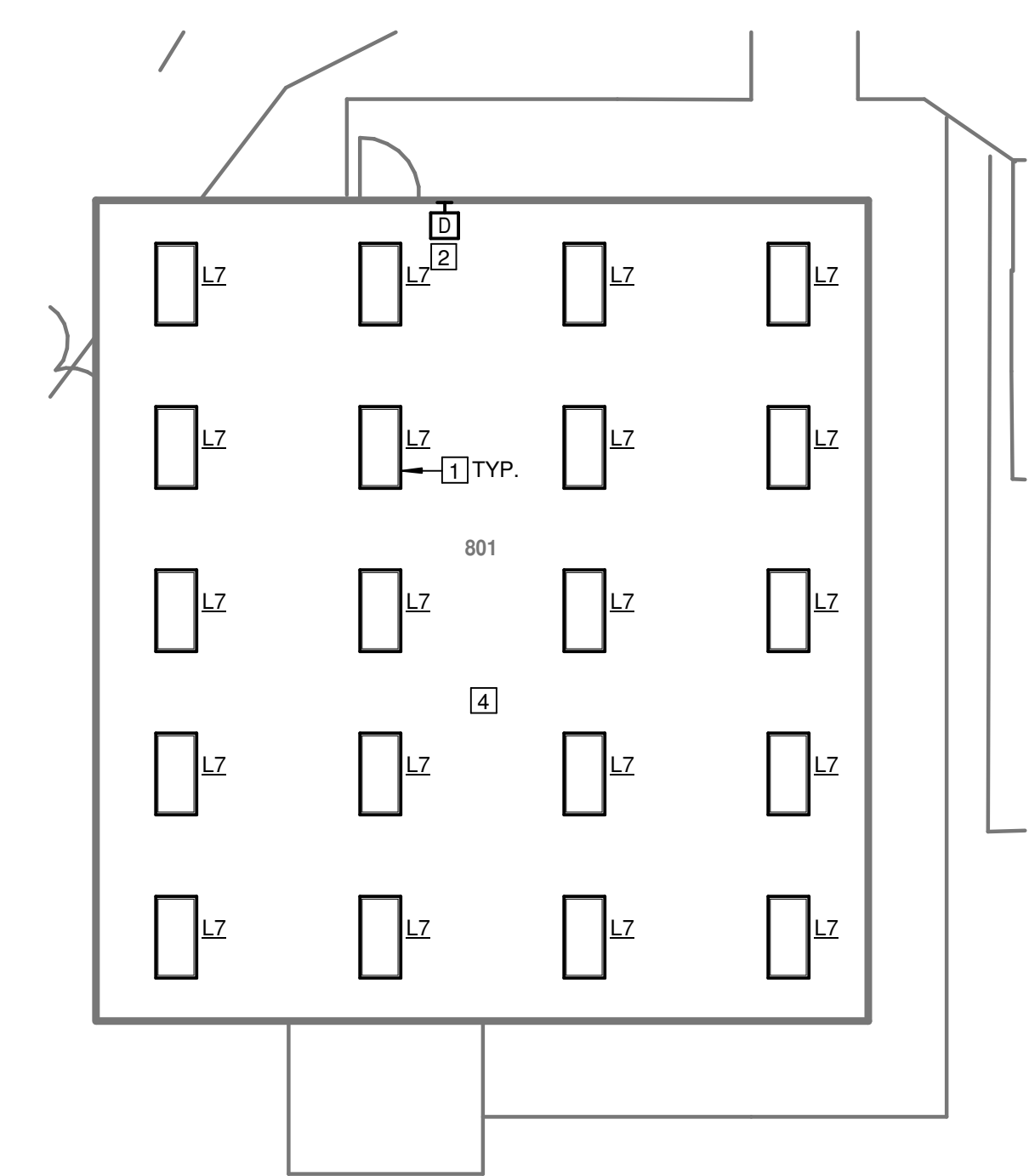
- A. NEW LUMINAIRES FOR PORTABLE BUILDINGS ARE OWNER FURNISHED, CONTRACTOR INSTALLED. FIXTURE TYPE IS LITHONIA BLT 2X4 LED TROFFERS, WITH INTEGRAL NIGHT AIR MOTION/DAYLIGHT SENSOR. CONTRACTOR SHALL PICK-UP THE OWNER FURNISHED EQUIPMENT (LOCATION TBD) AND DELIVER TO SITE, CONFIRM THAT LUMINAIRES ARE FUNCTIONAL AND IN NEW CONDITION, AND ACCOUNT FOR INSTALLATION AS THOUGH NEW.
- B. PROVIDE NEW NIGHT AIR CONTROLS FOR PORTABLE BUILDINGS. NEW CONTROLS SHALL BE COMPATIBLE WITH THE OWNER PROVIDED LUMINAIRES. NEW CONTROLS SHALL CONTROL LIGHTING AT CLASSROOM ENTRANCE, NEW DEVICE SHALL CONTROL LIGHTING AT FRONT OF THE CLASSROOM (NEAREST TO AV DISPLAY) SEPARATELY FROM BACK OF CLASSROOM. A NEW SCENE CONTROL DIMMER SWITCH WITH TWO SCENES (LECTURE MODE, AV MODE) SHALL BE PROVIDED AT FRONT OF CLASSROOM.

NUMBERED SHEET NOTES

- 1 REMOVE 2X4 EXISTING TROFFER. REFER TO DEMOLITION NOTES AND SPECIFICATIONS FOR DISPOSAL REQUIREMENTS. EXISTING LIGHTING CIRCUIT AND CEILING SUPPORT WIRES TO REMAIN FOR RE-USE. INSTALL NEW OWNER FURNISHED LED TROFFER AT EXISTING LOCATION, RECONNECT TO EXISTING CEILING SUPPORT WIRES AND LIGHTING CIRCUIT.
- 2 REMOVE EXISTING LINE VOLTAGE SWITCHES, AND MAKE-UP WIRING IN EXISTING BOX TO PROVIDE UNSWITCHED POWER TO CEILING LIGHTS. PROVIDE NEW LINE-POWERED WIRELESS SWITCH, NIGHT RPOOL, DIMMABLE WITH-CO. PROVIDE NEW DEVICE PLATE. EXISTING EXTERIOR LIGHTING CONTROL TO REMAIN, BUT REPLACE SWITCH/DEVICE WITH NEW.
- 3 CUT-IN A NEW, LINE POWERED "SCENE CONTROL" DIMMER SWITCH AT FRONT OF CLASSROOM. CONTRACTOR SHALL CONFIRM IDEAL LOCATION IN EACH CLASSROOM PRIOR TO ROUGH-IN; THE NEW DEVICE SHALL BE AT THE TEACHING WALL (SIDE OF WHITEBOARD) AND IN A LOCATION SO THAT LINE VOLTAGE (120V) POWER CAN BE 'FISHED' FROM NEAREST RECEPTACLE TO THE NEW DEVICE USING MC CABLE. ONLY IF ROUGH-IN CANNOT BE INSTALLED AS DESCRIBED, BATTERY POWERED DEVICE MAY BE CONSIDERED.
- 4 EXISTING LAYOUT IN THIS BUILDING MAY VARY. FOR BID PURPOSES, ASSUME THAT UP TO 4 ADDITIONAL OPT TROFFERS ARE TO BE INSTALLED IN THIS SPACE. CONFIRM EXISTING LIGHTING CONTROL LOCATION AND CONFIGURATION AND REPLACE WITH DIMMERS TO MEET THE GENERAL DESIGN INTENT. FOR BID PURPOSES, ASSUME 4 SINGLE ZONE DIMMER SWITCHES MAY BE REQUIRED. CONFIRM CONTROL ZONING OF NEW ADDRESSIBLE LIGHTING WITH THE OWNER.
- 5 REPLACE EXISTING CFL WALLPACK WITH NEW LED LUMINAIRE AS SPECIFIED. RECONNECT TO EXISTING CONTROLLED EXTERIOR LIGHTING CIRCUIT. PATCH AND REPAINT WALL BEHIND EXISTING LUMINAIRE TO MATCH EXISTING FINISHED SURFACE PRIOR TO INSTALLING NEW LUMINAIRE.
- 6 REMOVE EXISTING CFL WALLPACK AND BLANK OFF. PATCH AND REPAINT WALL BEHIND EXISTING LUMINAIRE TO MATCH EXISTING FINISHED SURFACE.
- 7 WHERE EXISTING FLUORESCENT 2X4 TROFFER IS REMOVED AND REPLACED WITH 2X2, CONTRACTOR IS TO PROVIDE NEW T-BAR RUNNER AND 2X2 ACOUSTIC CEILING TILE TO FILL THE REMAINING SPACE.



1 LIGHTING PLAN - BUILDING 900 PORTABLES
 SCALE: 1/8" = 1'-0"



2 LIGHTING PLAN - CHILD CARE BUILDING
 SCALE: 1/8" = 1'-0"

| REVISIONS | |
|-----------|-------------|
| # | DESCRIPTION |
| | |
| | |
| | |
| | |
| | |

| | |
|---|------------------|
| DESIGNER: TEE | DATE: 04/04/2024 |
| SCALE: 1/8" = 1'-0" | |
| DATE: 2024-02-29 | |
| TITLE: LIGHTING PLANS - BUILDING 900 PORTABLES & CHILD CARE | |
| DRAWING NO. E2.4 | |