



HANOVER
RESEARCH

SUPPLY-SIDE ECONOMIC IMPACT ANALYSIS

Prepared for Yuba Community
College District

November 2022

In the following report, Hanover Research (Hanover) analyzes the economic contributions of Yuba College and Woodland Community College in the Yuba Community College District service area. This report offers a supply-side analysis, which focuses on the colleges' (or district's) academic, social, and community impacts.



TABLE OF CONTENTS

3 / Supply-Side Economic Impact Overview

4 / Educational Impact

12 / Alumni Impact

16 / Community Service and Engagement

SUPPLY-SIDE ECONOMIC IMPACT OVERVIEW

CONTRIBUTIONS OVERVIEW

Hanover Research's Supply-Side Economic Impact Analysis for Yuba Community College District (YCCD) is organized into three main components:

- **Educational Impact** analyzes the impact of Yuba College's (YC) and Woodland Community College's (WCC) academic programs in its primary service region of Northern California.
- **Alumni Impact** evaluates the impact YCCD alumni have on the community, including estimated additional earnings as a result of earning a degree or certificate.
- **Community Service and Engagement** evaluates the impact of YCCD programs and community partnerships on student success.

Quantifiable contributions include **1,565 associate degrees and 383 associate degrees for transfer conferred** during the 2021-22 academic year; more than 11,986 unduplicated students enrolled in 2021-22; and an estimated **\$16,850,200** in additional annual income earned by 2020 graduates remaining in the local area, defined as Colusa, Glenn, Lake, Sutter, Yolo, and Yuba counties.

In addition to these quantifiable community benefits, **YC and WCC also support hundreds of students from over a dozen local high schools via a dual enrollment program that allows students to earn college credits or even an entire associate degree free of charge** while enrolled in their local high school. Both colleges also provide adult basic education for their communities.

KEY SUPPLY-SIDE ECONOMIC CONTRIBUTIONS



Degrees When Due efforts resulted in **1,565 associate degrees, 383 associate degrees for transfer, and 1,772 certificates conferred in 2021-22 by Woodland Community College and Yuba College**



YCCD institutions are a major driver of economic mobility in Northern California



Estimated additional alumni income of **\$16,850,200 per year for 2020 associate degree and certificate graduates nationwide**



In 2021-22, **601 YCCD students transferred to four-year colleges and universities to continue their education**



YCCD institutions granted over **\$18.3 million in total financial support to students in 2021-2022**



EDUCATIONAL IMPACT

STUDENT POPULATION

STUDENTS SERVED, FALL 2022

“Yuba Community College District provides all individuals in our diverse communities access to high-quality, affordable higher education that is responsive to student needs. Our mission is to inspire and advocate for student success through our passion and commitment to teaching, learning, and social justice.”

YCCD is a multi-college district located in rural north-central California with a service area of 4,192 square miles. The district includes two colleges, centers in Clear Lake and Sutter County, and an outreach campus in Williams. The district has a rich history, and its oldest college was founded in 1927. During the fall 2022 semester, the district enrolled and served 8,862 students.

YCCD FAST FACTS

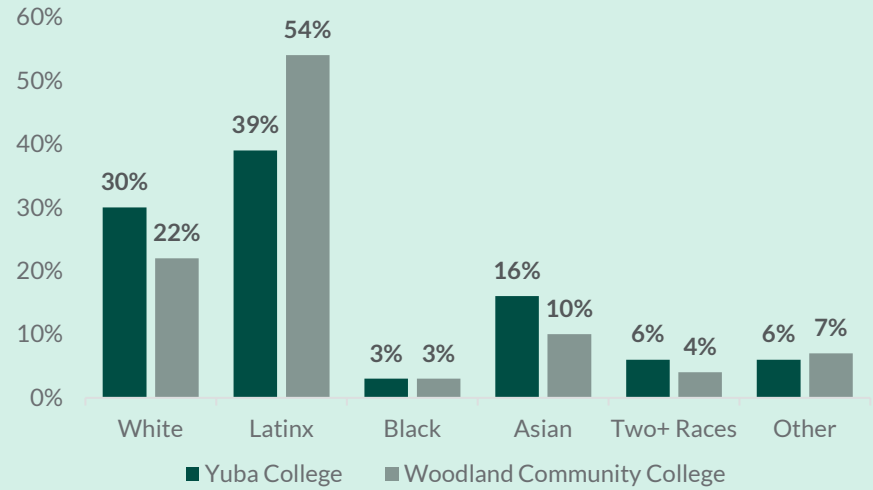
39% and 54%

- The share of Latinx students enrolled at YC and WCC in 2022
- Across the system, Latinx students are the most commonly-served demographic group

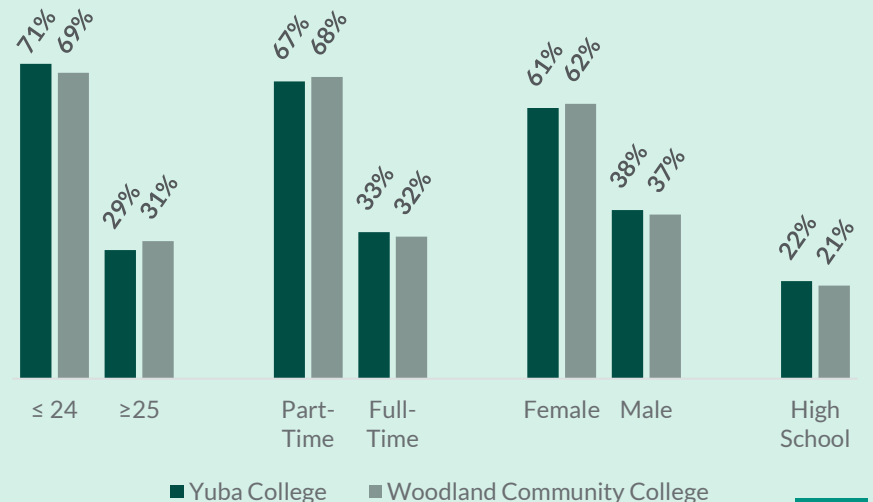
67% and 68%

- The share of part-time students at YC and WCC in 2022
- Roughly two-thirds of YCCD students are enrolled on a part-time basis and most are age 24 and under

STUDENT DEMOGRAPHICS



STUDENT AGE AND ATTENDANCE STATUS

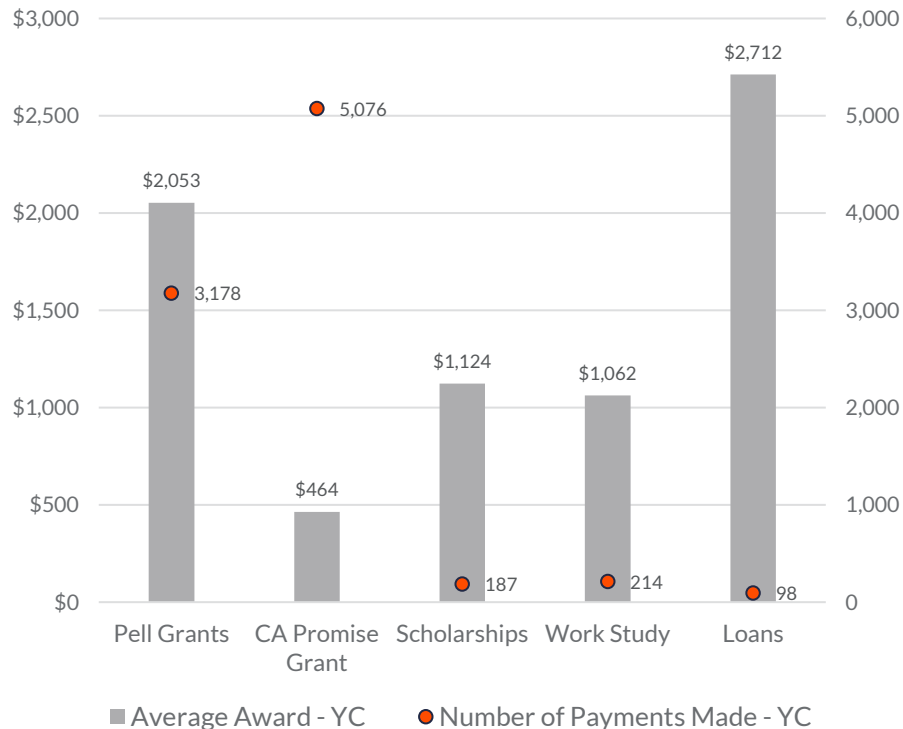


FINANCIAL AID AWARD VALUES AND PREVALENCE

YUBA COLLEGE

YC awarded \$12,444,761 in financial aid and loans to 3,469 unduplicated students during the 2021-22 academic year. The awards totals follow:

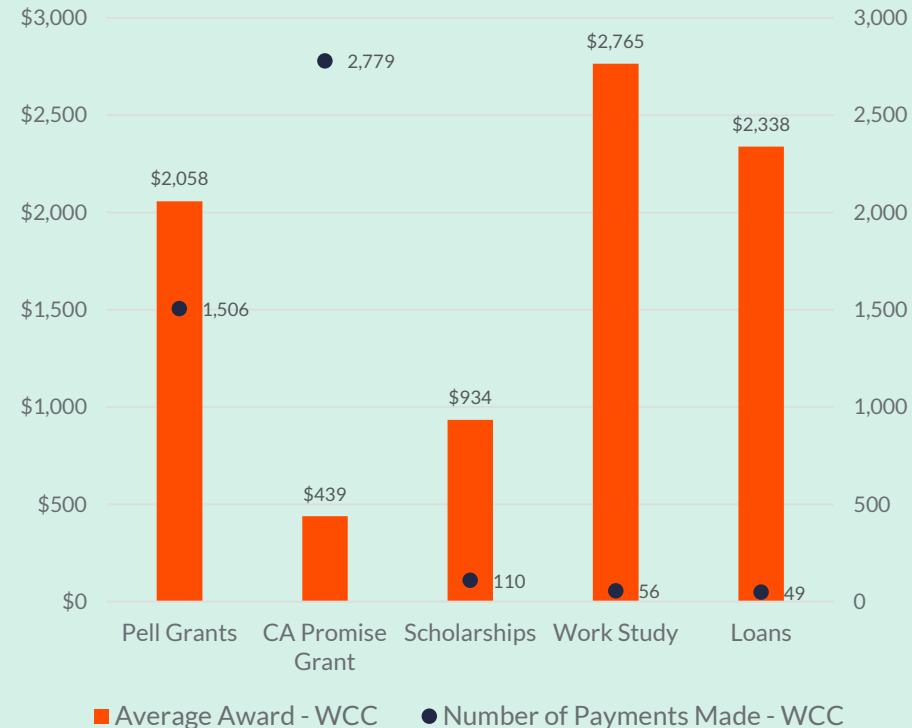
CA Promise Grant: \$2,353,291
 Pell Grant: \$6,523,134
 Other Grants: \$2,865,105
 Scholarships: \$210,121
 Work Study: \$227,323
 Loans: \$265,787



WOODLAND COMMUNITY COLLEGE

WCC awarded \$5,924,955 in financial aid and loans to 1,903 unduplicated students during the 2021-22 academic year. The awards totals follow:

CA Promise Grant: \$1,218,816
 Pell Grant: \$3,098,810
 Other Grants: \$1,235,237
 Scholarships: \$102,712
 Work Study: \$154,821
 Loans: \$114,559



ACCOLADES AND OUTCOMES

YCCD GRADUATES BY THE NUMBERS

YCCD institutions conferred 1,772 certificates, 1,565 associate degrees, and 383 associate degrees for transfer for the 2021-22 academic year, and some 601 students transferred to four-year colleges and universities in California and beyond. The district's largest academic programs include general education associate degrees, occupational/allied health, and psychology, while the most popular certificates align with transfer requirements and essential fields such as childcare, policing and public safety, firefighting, substance abuse counseling, and administrative support.

Top associate degrees	2021-22	Top Certificates	2021-22	Transfer Student Destinations	2021-22
GE- Natural Science	271	CSU General Education Breadth	792	Total	601
GE - Social & Behavioral Science	455	Child Dev. Associate Teacher	308	CSU Institutions	312
Pre-Health Occupations	135	Transitional Kindergarten and Early Education	106	UC Institutions	78
Biology-Allied Health	103	IGETC	98	In-State Private	41
Psychology	94	Child Development Teacher	52	Out-of-State	170

YCCD POINTS OF PRIDE

\$18.3 MILLION
YCCD FINANCIAL AID SUPPORT GRANTED IN 2021-2022

\$479,922
2021-22 YCCD FOUNDATION FUNDS DONATED FOR STUDENT SUPPORT

297
2021-2022 YCCD FOUNDATION SCHOLARSHIP AWARDED, VALUED AT \$312,833

6,290
NUMBER OF FIRST-GENERATION STUDENTS IN 2021-22

8,103
NUMBER OF STUDENTS OF COLOR IN 2021-2022

4,516
NUMBER OF HIGH SCHOOL STUDENTS IN 2021-2022



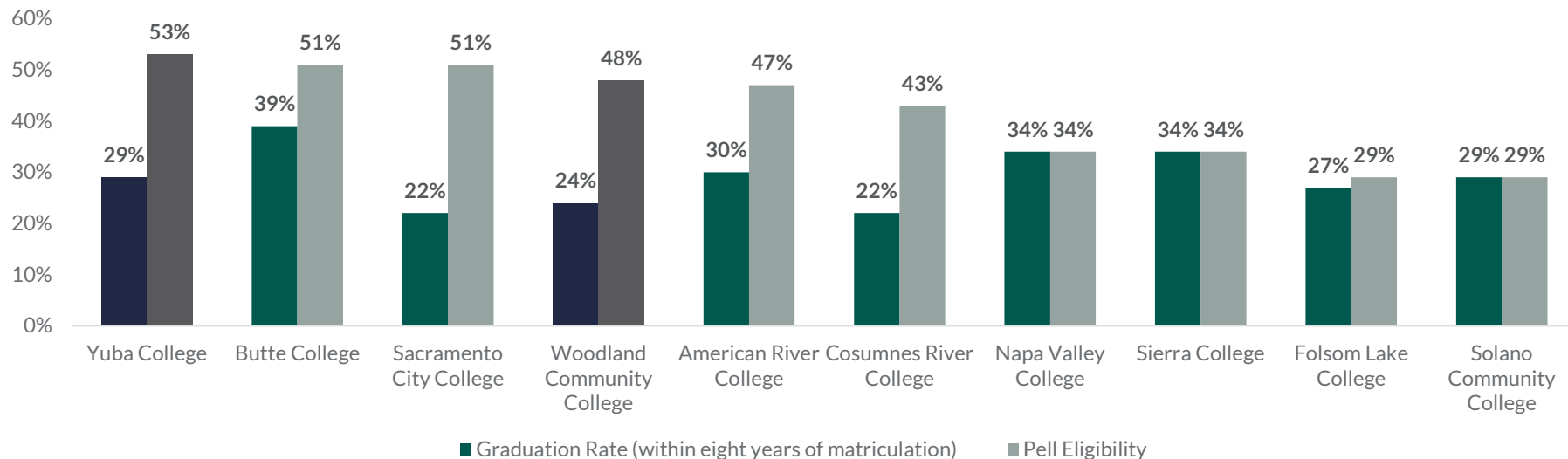
NCES COLLEGE SCORECARD OUTCOMES – CONTEXT

GRADUATE EARNINGS

Yuba College's strong earnings performance relative to median family incomes for its home county is impressive because the college has the highest rate of Pell grant eligibility of any colleges in its vicinity. The average graduation rate across the regional community college peer set is 29 percent, while the average Pell grant eligibility rate is 42 percent. WCC's Pell grant eligibility rate is similarly elevated at 48 percent, and its eight-year graduation rate of 24 percent is somewhat below average but still comparable with rates achieved by other local institutions with lower Pell eligibility rates. YCCD institutions' strong combination of graduation rate performance in the face of elevated student poverty rates, as well as their ability to prepare graduates who can earn disproportionately high wages for their home counties illustrates these institutions' contributions to economic mobility in northern California.

GRADUATION RATE AND PELL GRANT ELIGIBILITY RATES

Graduation and Pell grant eligibility data derive from the U.S. Department of Education [College Scorecard](#). The national average Pell grant eligibility [rate](#) across all postsecondary institutions is roughly 34 percent. Institutions shown in the graph are those in neighboring counties. The average Pell grant edibility rate across the ten institutions shown is 42 percent, while the average graduation rate is 29 percent.



CONTRIBUTION TO LOCAL HIGH-DEMAND FIELDS: ASSOCIATE

REGIONAL WORKFORCE CONTRIBUTIONS

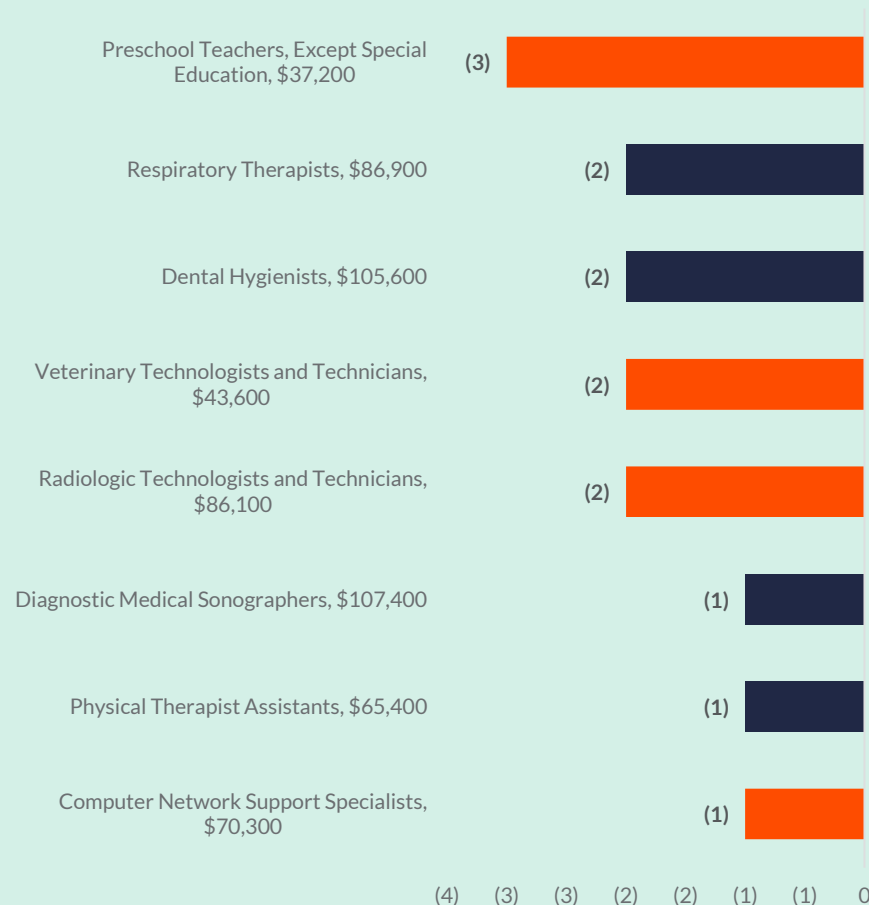
A Chmura Economics & Analytics analysis of 2021-2031 occupational employment trends for the region identifies eight occupations at the associate degree level where the projected number of vacancies is likely to exceed the region's available workforce. For example, experts expect that there will be three more preschool teaching positions in the six-county area than workers to fill those roles every year in the next decade.

YCCD's contribution to the local economy is highlighted by its academic programs aligning with four of the top eight occupations with predicted regional worker shortages. Many of these positions are in essential health care, education, and technology roles. Access to talent is becoming an acute economic problem in the wake of the COVID-19 pandemic. YC's and WCC's contributions to the local workforce are helping the region remain economically competitive and attractive to employers.

Hanover matched high-demand occupations with YCCD programs by evaluating the YC and WCC program lists and degree conferrals data. We also consulted the current Bureau of Labor Statistics and National Center for Educational Statistics [Crosswalk](#), which links programs of study and occupations. This analysis reflects programs offered at either YCCD college, though some programs are available at both institutions.

YCCD SERVICE AREA OCCUPATIONS WITH PROJECTED WORKFORCE SHORTFALLS

The graph below shows the projected annual average occupational employment gaps for associate-level occupations in the six-county YCCD service area. Occupations shown in orange align with at least one YC or WCC program.



Source: [JobsEQ](#). Occupational wages are shown next to the occupation name.



CONTRIBUTION TO LOCAL HIGH-DEMAND FIELDS: CERTIFICATES

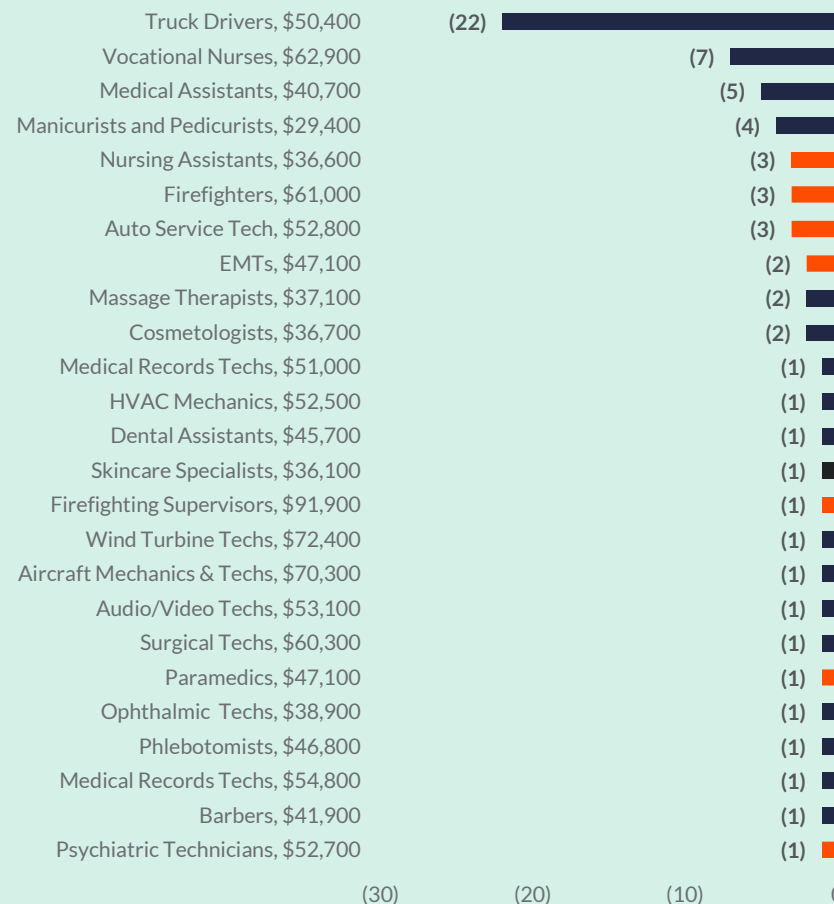
REGIONAL WORKFORCE CONTRIBUTIONS

Based on Chmura Economics & Analytics analysis of 2021-2031 occupational employment trends in the YCCD service region, there are 25 occupations with projected employment gaps at the certificate level. The fields with the largest projected employment gaps are heavy and tractor-trailer truck drivers (22), licensed practical nurses (seven per year), and medical assistants (five per year).

The region is projected to experience shortages of firefighters and emergency medical technicians, and the EMT programs at YC and WCC and the Fire Science program at YC are helping to meet these critical needs. Another area of essential contributions that does not appear in the data is the YCCD system's provision of basic skills courses that prepare regional residents for postsecondary education. The YCCD colleges [offer](#) courses in ESL/ESOL, Basic Computer Skills, College Readiness and Success, Career Planning and Development, and Cooperative Work Experience. Similarly, the colleges [offer](#) evening and weekend classes, and workshops to help students meet their personal and professional goals, as well as a high school dual enrollment [program](#).

YCCD SERVICE AREA OCCUPATIONS WITH PROJECTED WORKFORCE SHORTFALLS

The graph below shows the projected annual average occupational employment gaps for certificate-level occupations in the six-county analysis area. Occupations shown in orange align with at least one YC or WCC program.





EDUCATIONAL IMPACT

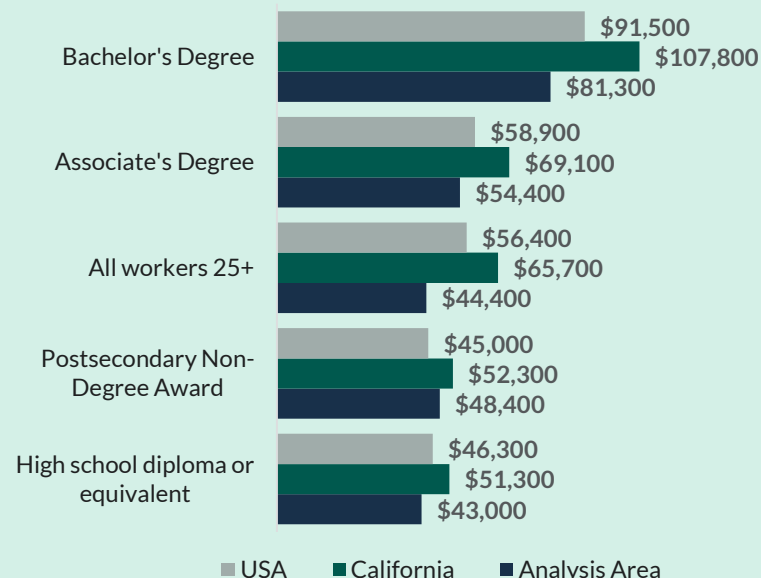
ECONOMIC “VALUE ADDED” ANALYSIS

Yuba College and Woodland Community College make a significant economic contribution via increased economic mobility and earnings power for graduates. The [Bureau of Labor Statistics](#) (BLS) finds that the average income for a worker over 25 increases with each educational credential earned; the highest salaries are awarded to workers with a doctoral or professional degree. Additionally, unemployment rates decrease with each credential earned.

Hanover conducted a regional “value added” analysis for the analysis area, which we define as Colusa, Glenn, Lake, Sutter, Yolo, and Yuba Counties. This analysis is intended to provide a broad illustration of the monetary value graduates of YCCD programs receive via increased earnings. To estimate this value, Hanover cross-referenced associate degrees and certificates conferred by YCCD in 2020 with the differences between median income for individuals holding these credentials with a high school diploma. To estimate the number of graduates within the six-county region, Hanover weighted conferrals by the percentage of enrolled students YC and WCC reported as “in-area.” This analysis makes several assumptions:

- Assumes all in-area graduates pursue employment in the YCCD service area and earn at least the regional median for that degree level.
- Does not account for variations by degree type or specialization.
- Estimates income based on median salaries for workers over 25 across all ages and experience levels.

MEDIAN ANNUAL EARNINGS BY EDUCATIONAL ATTAINMENT, 2020



2020 SALARY PREMIUM BY DEGREE LEVEL FOR YCCD SERVICE AREA RESIDENTS

Educational Attainment	Premium Verses High School Diploma
Certificate	+\$5,400
Associate's Degree	+\$11,400
Bachelor's Degree	+\$38,300

Source: [JobsEQ](#), using BLS 2020 Quarterly Census of Employment and Wages [data](#)

STUDENT SUCCESS SNAPSHOTS

WOODLAND COMMUNITY COLLEGE



Jessica Roeckl-Navazio

AA in Social & Behavioral Science and AA in Child And Adolescent Development
Transferring to CSU Sacramento



Gurtaj Grewel

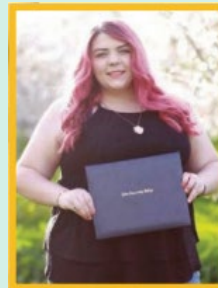
MESA (Mathematics Engineering Science Achievement) Center participant and Student Success Center Tutor
ADT in Communication Studies and AA in Social & Behavioral Science
Transferred to UC Davis to study Community and Regional Development



Leah DeSouza

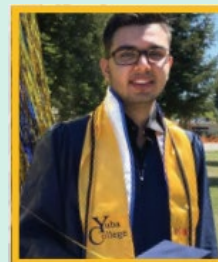
Administrative Assistant AA Degree and Certificate
Stay-at-Home Mom and WCC Lake County Campus Medal Recipient for 2020-21 for Excellence in Academics, Leadership, and Service

YUBA COLLEGE



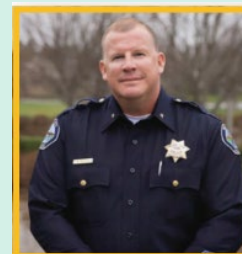
Emma Cucchi

Dual Enrollment Student from Sutter Union High School; earned a Yuba College Associate Degree in December 2020 Before Graduating from High School in 2021



Shivam Khosla

ADT in Mathematics and AS in Natural Sciences
First-Generation Student who earned a UC Regent's Scholarship; Plans to Attend UC Davis for Mechanical Engineering



Brian Baker

YC Police Academy Graduate in 1994
Served on the Yuba City Police Department Since Graduation; Retiring as Chief of Police After a 27-Year Career



COMMUNITY SERVICE AND ENGAGEMENT

DUAL ENROLLMENT OVERVIEW

Yuba College and Woodland Community College manage robust dual enrollment programs in which the colleges partner with local high schools to provide college credit-bearing courses to students in Grades 9-12. The dual enrollment program [helps](#) participating students in a number of ways:

- Students who participate can potentially earn an associate degree from YC or WCC by the time they graduate from high school.
- Courses and textbooks are free, so students can earn college credits, or even an entire degree, without paying tuition or going into debt.
- Participants get an early preview of what college life and learning is like, equipping them to succeed academically.

According to the U.S. Department of Education's What Works Clearinghouse, which conducts stringent reviews of educational practices, Dual Enrollment [programs](#) have clear positive impacts on students:

- College degree attainment
- College access and enrollment
- College credit accumulation
- High school completion and general academic achievement

These programs also show potentially positive impacts on high school persistence and attendance, as well as college readiness.



DUAL ENROLLMENT PARTNERS



Esparto High School

Lower Lake High School

Maxwell High School

Middletown High School

Pierce High School

Pioneer High School

Woodland High School

Williams Junior Senior Early College High School



East Nicolaus High School

Feather River Charter School

Lindhurst High School

Marysville Charter Academy for the Arts

Marysville High School

River Valley High School

South Lindhurst High School

Sutter Union High School

Wheatland High School

Yuba City High School

Yuba County Career Preparatory Charter School

COMMUNITY PARTNERSHIPS AND STUDENT SUPPORT SERVICES

WCC COMMUNITY PARTNERSHIPS FOR STUDENT WELLBEING AND SUCCESS

WCC partners with health care providers and other community organizations to help meet the basic needs of students and their families, thereby enabling them to remain enrolled.



WCC partners with **CommuniCare** to provide all students with behavioral and physical health services. Behavioral health services include one-on-one counseling, group therapy and support, drop-in services, and workshops. Students may also access medical visits, sexual and reproductive health, health screenings, vaccinations, and referrals via CommuniCare.



Adventist Health in Lake County partnered with the WCC Lake County Campus to offer a “World Wellness Tour” in Spring 2021. Students could visit different stations for services related to physical and mental health, reproductive health, and job opportunities with Adventist Health.



WCC initiated a partnership with **Redwood Empire Food Bank** to distribute produce, meat, eggs, butter, and non-perishable food items to students and community members on the Lake County Campus. Food is offered on a monthly basis.

YC COMMUNITY PARTNERSHIPS FOR STUDENT WELLBEING AND SUCCESS

As shown by the Yuba College examples highlighted below, both YCCD institutions offer an array of student services designed to help students succeed, regardless of the challenges they face.



To recognize the continued challenges of students accessing basic needs (food, housing, transportation, healthcare), the College has recently expanded its long-standing on-campus food pantry (Dusty’s Pantry) through a partnership with the Yuba-Sutter Foodbank. In addition, the College hired a Basic Needs Coordinator who started this Spring. These efforts resulted in extended hours and the availability of additional food for students.



Yuba College continues to effectively partner with both Yuba and Sutter County CalWORKs programs to support clients in attaining their educational goals. Our Disabled Students Programs and Services (DSPS) office provides learning disability assessment services for Yuba and Sutter clients referred to us. Additionally, through a partnership with Yuba Health and Human Services, our college-based CalWORKs program provides additional counseling and coordination services for clients from Yuba County.



The Blue Zones Project has been expanding its efforts in the Yuba-Sutter Community for the past two years to encourage healthier options for our community. Yuba College is now partnering with the project to the benefit of our students and employees through wellness workshops and events such as healthy cooking and finding life purpose.



HANOVER
RESEARCH

CONTACT

Wendy K. Richardson, Ph.D.
Content Director, Higher Education

E: wrichardson@hanoverresearch.com

P: 202.240.1885

 hanoverresearch.com

