



REPORT TO THE COMMUNITY 2020/21



YCCD MISSION (Adopted October 14, 2021)

Yuba Community College District provides all individuals in our diverse communities access to high-quality, affordable higher education that is responsive to student needs. Our mission is to inspire and advocate for student success through our passion and commitment to teaching, learning, and social justice.

LEADERSHIP

Yuba Community College District Governing Board

- Richard Teagarden, Trustee Area 1
- Dennise Burbank, Trustee Area 2
- David Wheeler, Trustee Area 3
- Juan Delgado, Trustee Area 4
- Jesse Ortiz, Trustee Area 5
- Susan Alves, President, Trustee Area 6
- Bill Roderick, Trustee Area 7
- Maria Ornelas, the current 2021/2022 Student Trustee for Yuba College
- Donovan Hutchins, Student Trustee, Woodland Community College

District Office

- Dr. James Houpis, Chancellor
- Dr. Sonja Lolland, Vice Chancellor, Educational Planning & Services
- Kuldeep Kaur, Vice Chancellor, Administrative Services
- Devin Crosby, Assistant Vice Chancellor, Chief Technology Officer
- Jacob Hurley, Associate Vice Chancellor of Human Resources
- David Willis, Director of Maintenance & Operations
- Thomas Lowden, Director, Yuba Community College District Foundation

Woodland Community College

- Dr. Artemio Pimentel, President
- Kasey Gardner, Vice President of Instruction
- Adela Esquivel-Swinson, Vice President of Student Services
- Dr. Cirilo Cortez, Dean, Lake County Campus

Yuba College

- Dr. Tawny Dotson, President
- Dr. Carla Tweed, Executive Vice President
- Dr. Dwayne Hunt, Vice President of Student Services
- Jeremy Brown, Dean for Student Success & Institutional Effectiveness

CONTENTS

- 3. Letter from Chancellor & Governing Board President
- 4. Our Students
- 6. Woodland Community College Highlights
- 12. Yuba College Highlights
- 14. Foundation & Financials

LETTER TO THE COMMUNITY

On behalf of the Board of Trustees, I would like to express our sincere appreciation for your ongoing support throughout the years in making the Yuba Community College District an exceptional institution for advancing opportunity, equity, and social justice for everyone through educational excellence.

We invite you to visit all five campuses, highlighted in this annual report in the coming year to experience the progression of our campus updates and facility renovations, evidence of the community's support through previous Bond measures.

We appreciate the rich diversity of ideas and thought represented by the communities served within our district. Through recently held forums, community leaders provided direction in the development of our long-term strategic plan for the future, to advance unsurpassed educational outcomes for our students and to ensure a strong workforce for our communities.

In addition, the Board of Trustees have begun the recruitment and search process for a permanent Chancellor. We invite you to attend community forums to be held in the near future and provide input which will help us create a collective vision for a Chancellor who will best fit the needs of our YCCD College community.

Thank you for taking time to review this report and for your help in making 2021 a great year of meaningful accomplishments. Let's break down barriers for student success and work together to build a brighter future for our students, employees, and communities.

In Community,
Susan Alves
Susan Alves

GREETINGS FROM CHANCELLOR HOUPIS

The 2020-2021 year was a time of change and challenge for the Yuba Community College District.

Our District started the year with high hopes that the COVID-19 pandemic was beginning to wane, and we might soon be on our way back to a sense of normalcy. Regrettably we spent the year on the COVID rollercoaster, and we have realized that a sense of normalcy is still on the horizon. Throughout the year YCCD faculty and staff exhibited exceptional professionalism in dealing with, and overcoming the challenges of the pandemic to provide our students with quality instruction and student services. It was in the later part of the year that I was welcomed to the District as the Interim Chancellor with the goals of sheparding the District as we continue to focus on the Vision for Success goals, see more students return to campus for in-person instruction, selects a new Chancellor, and remain hopeful for that sense of normalcy.

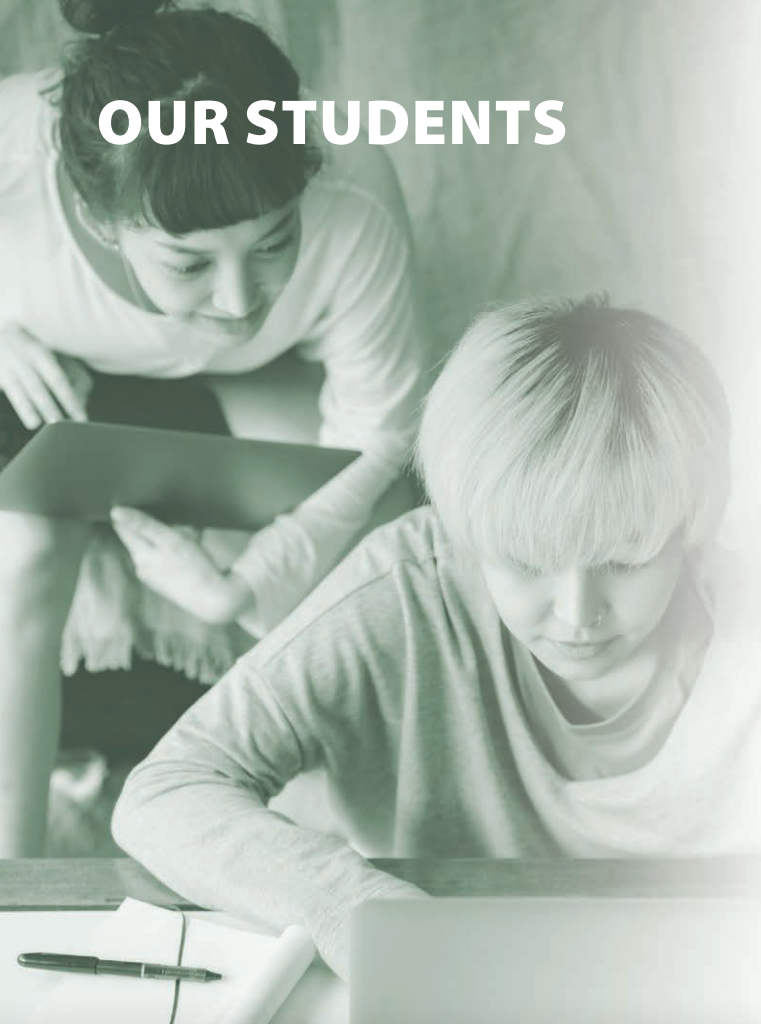
As I look forward I know that collectively our District will be able to reach our vision to empower our students and strengthen our communities by providing equitable, student-centered learning opportunities. Because we are constantly reminded about all that can or may go wrong, I realize that how we provide the educational experience will be different going forward, I am just not clear what it will look like. What will be our new normal?

Will it be in-person or on Zoom. Regardless, I encourage all of you to seek your own personal sense of normalcy. Capture your hopes and dreams, most importantly pursue them. During my time with the District I am challenged every day to make a meaningful impact for our students, our employees and the communities we serve. I encourage everyone to do the same.

I look forward to the promise of a new academic year and I know that together we will be YCCD STRONG!

Warm Regards,
Dr. Jim Houpis
Dr. Jim Houpis

OUR STUDENTS



YUBA COMMUNITY COLLEGE DISTRICT provides a safe, welcoming and rewarding educational environment for student to pursue their education. The District served a diverse student population of 12,155 individuals during the 2020-2021 academic year. Our students come from a wide variety of backgrounds, ages and ethnicities. In addition to their educational pursuits, many have jobs, serving in the military, raising young children, and volunteering in the community. Our students are young and young at heart, with an average age of 24 years they range from dual enrollment high school getting a head start on their college careers to active older adults returning to school to learn a new skill or pursue a passion. Our campuses continues a long tradition of supporting individuals serving our country in the military by providing an educational avenue for them and their families. 349 members of the military, along with 615 dependents were enrolled in YCCD during this past year.

Realizing the real cost of attending a community college exceeds \$10,000 on an annual basis when you include tuition, books, fees, housing, food, transportation and general living expenses it is not surprising that the majority of our students received financial aid support for their education with more than \$24.9 million in assistance granted.

Our student’s family heritages can be traced to communities around the globe, and both Woodland Community College and Yuba College have been federally designated as Hispanic Serving Institutions. Dreamers are young undocumented immigrants who were brought to the United States as children. These young people have lived and gone to school in our local communities from a very young age and in many cases they identify as American. These student have big hopes and dreams for their futures. During the year Yuba College and Woodland Community College supported the hopes and dreams of 332 Dreamers.

When students leave our colleges many move onto four-year institutions or higher education while others begin their careers. During the recent commencement ceremonies 1,365 Associate Degrees were bestowed and 238 Certificates were awarded.

WHERE OUR STUDENTS GO

Transfers 2019-20	WCC	YUBA	YCCD
Total	191	443	634
CSU	125	234	359
UC	55	52	107
In-State Private	3	32	35
Out-of-State	8	125	133

(Source: https://datamart.cccco.edu/Outcomes/Student_Transfer_Volume.aspx)

AWARDS & CERTIFICATES

	WCC	YUBA	Grand Total
Associate Degree - Transfer	147	196	343
Associate in Science	140	539	679
Associate in Arts	121	82	343
Certificates	67	171	238
Grand Total	475	988	1,463

(Source: Academic Program Awards Summary 06/01/2019 - 05/31/2020)



FULL-TIME / PART-TIME STATUS

FT / PT STATUS	WCC	YUBA	Grand Total
Full-Time	22.9%	30.6%	27.7%
Part-Time	72.0%	67.4%	69.1%
Non Credit	5.1%	2.0%	3.2%
Grand Total	100%	100%	100%

(Source: Student Success Report)

GENDER

	WCC	YUBA	Grand Total
Female	64.7%	62.3%	63.2%
Male	34.5%	37.3%	36.3%
(Blank)	0.8%	0.3%	0.5%
Grand Total	100%	100%	100%

(Source: Student Success Report)



FINANCIAL AID 2019-20

	WCC	YUBA	YCCD
Total	\$7,405,641	\$17,500,639	\$24,906,280
CA College Promise Grant	\$1,709,383	\$3,533,398	\$5,242,781
Grants	\$5,353,138	\$13,403,092	\$18,756,230
Loans	\$82,277	\$293,410	\$375,687
Private Scholarships	\$108,457	\$129,831	\$293,294
Work Study	\$152,386	\$140,908	\$293,294

(Source: https://datamart.cccco.edu/Services/FinAid_Summary.aspx)



ETHNICITY

	WCC	YUBA	Grand Total
Asian	7.7%	19.9%	15.2%
Black or African American	2.2%	2.9%	2.6%
Hispanic	53%	33.8%	41.1%
American Indian or Alaska Native	0.5%	0.6%	0.6%
Native Hawaiian or Other Pacific Islander	0.3%	0.5%	0.4%
Two or more Races	4.1%	6.8%	5.8%
White	26.4%	32.8%	30.3%
Unknown	5.7%	2.7%	3.9%
Grand Total	100%	100%	100%

(Source: Student Success Report)

CELEBRATING WOODLAND COMMUNITY COLLEGE

Woodland Community College was founded in the fall of 1975 as an outreach program of Yuba College. Since its beginning, the students, staff, faculty, and community members have all been an integral part of Woodland Community College's history, and the reason

the college continues to work to build a better future for the communities it serves. The past year was shaped by dealing with the experiences presented by the highs and lows of a pandemic. As we take a look back at Woodland Community College, we welcome you to learn about our

community, our accomplishments, the challenges, and some of the programs and projects that will contribute to new memories.

OUR STUDENTS - EAGLES ARE SOARING!



Jessica Roeckl-Navazio started her journey at Woodland Community College in the Fall of 2015. She graduated in the Spring 2021 with an Associate of Art degrees in Social & Behavioral Science, and an Associate of Art degree in Child and Adolescent Development. Jessica is transferring to California State University of Sacramento and says that "Disability is not Inability."



Leah DeSouza was a Business student at the Lake County Campus of Woodland Community College. As a stay-at-home mom, she began college to improve her skills in order to better support her children. She has overcome many challenges, including a son who has special needs, and having to teach her children and herself during the pandemic. She has overcome these adversities, maintained a 4.0 GPA, and was selected as the, LCC's Medal Recipient for the 2020/21 academic year. The LCC Medal is given annually to a student who excels in academics, leadership and service. Leah earned an Administrative Assistant Associate Degree as well as a Certificate in the same discipline.



In the summer of 2015, **Gurtaj Grewal** walked into the MESA Center and asked how he could join the program. As a computer engineering student, he was ready to sign up. Though his major changed from a STEM focus, he proudly represented the MESA program throughout his time at Woodland Community College and remained a part of the program even joining the Student Success Center as a tutor. Gurtaj graduated in Spring 2021 with an Associate of Arts Transfer Degree in Communication Studies and an Associate of Arts in Social & Behavioral Science. He transferred to UC Davis where he plans to pursue a degree in Community and Regional Development.



BIENVENIDA 2020

In the Fall of 2020, Woodland Community College held its first ever Bienvenida to welcome and orient students to WCC. Bienvenida was a great success with more than 75 participants attending the live event and numerous others that participated via Zoom and YouTube. The event was truly a celebration for the start of a new academic year and was lead by Dr. Lisceth Brazil-Cruz, Dean of Student Success-Institutional Effectiveness, and Dr. Cirilo Cortez, Dean of the Lake County Campus.

A CARING COMMUNITY

One of the significant impacts of the COVID-19 pandemic was the increased food insecurities experienced by our students, families and communities we serve. In an effort to help alleviate this challenge, food distributions became a regular and important part of our college's routine. Food distributions took place three times a week on the Woodland campus, and monthly on the Colusa County and Lake County campuses. Being able to provide food through partnership with the Yolo Food Bank, with produce grown in campus greenhouses and through our campus food pantries, has kept students connected to campus and has helped relieve some of the stress as they continue to work towards their educational goals.



LGBTIQ+ INITIATIVE

Through a partnership with CommuniCare and the Associated Students of Woodland Community College, the college launched a LGBTIQ+ initiative during this past year to support students, staff and faculty. Through the celebration of a Pride Week in the spring of 2021 and other activities, this Initiative helps to provide a safe space for LGBTIQ+ individuals and their allies to connect and build community at the college.



CELEBRATING WCC'S LATINX & ETHNIC STUDIES GRADUATES

In the Spring of 2021 we held a virtual Si Se Puede celebration to honor our Chicano/a Ethnic Studies graduates. Si Se Puede is a bilingual ceremony recognizing the accomplishments of graduating Chicano and Latinx students, honoring their families and the communities that have supported the students in their commitment to reach this important academic achievement at Woodland Community College. The highlight of the celebration was a Keynote address from award-winning author, Reyna Grande as she shared her experience being an undocumented immigrant as well as a first-generation community college student on her journey to becoming an author.

WOODLAND COMMUNITY COLLEGE

COMMUNITY PARTNERS



COMMUNICARE

All Woodland Community College students have access to both behavioral health and physical health services through a partnership with CommuniCare. Behavioral health services are obtained via one-on-one counseling, group therapy and support, drop-in services and workshops. CommuniCare is staffed with a full-time behavioral health specialist. Students also have access to physical health offerings including medical visits, sexual and reproductive health, health screenings, vaccinations, and referrals to further care when needed.

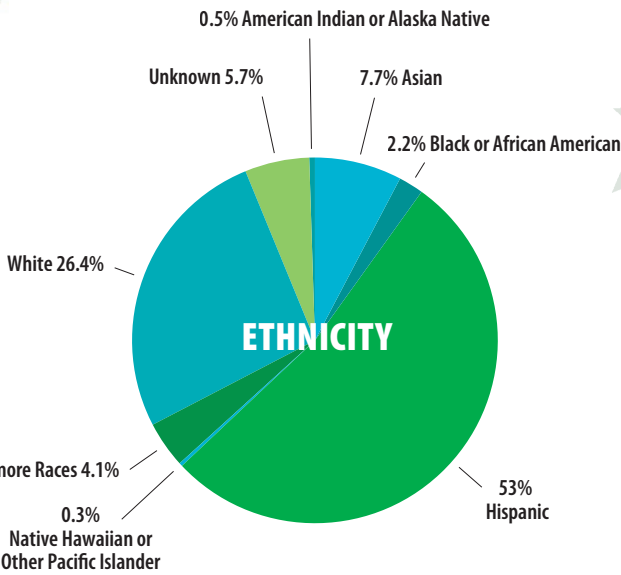
ADVENTIST HEALTH IN LAKE COUNTY

Through a partnership with Adventist Health, Lake County Campus held its first “World Wellness Tour” in the spring of 2021. During the event, students visited different stations depicted as countries where they received a stamp on their “passport” and were assisted with services such as applying for Medi-Cal, stress and anxiety management, medical and dental screening, STD testing, birth control information, and job opportunities at Adventist Health.



REDWOOD EMPIRE FOOD BANK

In June the Lake County Campus kicked off a partnership with the Redwood Empire Food Bank to distribute produce, meat, eggs, butter and non-perishable food items to students and community members on the campus. Relying heavily on the support of Food Bank and LCC volunteers, the distribution is held on a monthly basis for the benefit of students.



A QUALITY STAFF & FACULTY TEAM

Whether inside a classroom, at the front desk or working the grounds, Woodland Community college staff and faculty on all three campuses never cease in going above and beyond on a daily basis to ensure students feel welcome, safe and appreciated on their educational journey. For example, **Lacey Yuke** works in the Agriculture Department and was recently honored by the Yuba Community College District Governing Board for her outstanding work. She works closely with Master Gardeners to support the extension work that they perform at the college, and to maintain the Master Gardener projects during the pandemic; she supports our food distribution program at the Lake and Colusa campuses by providing fresh produce from the WCC Greenhouses; and she put together student plant therapy events through the TriO and MESA programs.



IMPROVING AND DEVELOPING QUALITY FACILITIES

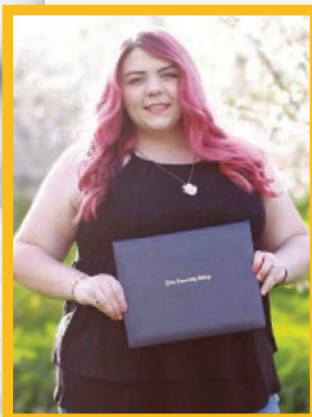
While the pandemic limited the number of students on campus during the past year and brought many challenges to operating the campuses, the Woodland Community College Maintenance & Operations team in collaboration with district leadership have completed and worked on many projects over the last year, including a new roof on WCC Building 600, Renovation of the WCC Student Success Center, fencing the campus garden, and working with PG&E to adding an upgraded Power Grid in at the Lake County Campus. In addition work continues on the design of the Performing Arts and Culinary Arts project scheduled to break ground in early 2022.



YUBA COLLEGE

CELEBRATING YUBA COLLEGE

Yuba College's roots go back to 1911 when Marysville Junior College, one of the first junior colleges in California, opened its doors to 67 students at Marysville High School. In 1927 citizens organized the Yuba Community College District and Yuba College has now served the region for nearly 95 years. Yuba College is focused on preparing a diverse student population to excel in a rapidly changing world. The college's academic programs and student services empower students to achieve their educational and life goals. Yuba responds to the diverse educational, cultural, and economic needs of its community by promoting individual potential through effective teaching and learning in an inclusive environment.



OUR STUDENTS – THE ORIGINAL 49ers!

Emma Cucchi's Yuba College career began at Sutter Union High School where she first started taking Yuba College courses her freshman year. She started with a computer and sign language class and continued on from there.

In December of 2020 Emma graduated from Yuba College with an associate's degree and she graduated from Sutter Union High School in June 2021.

"I feel like once I really got started, I was motivated to be able to have my associate's degree. Most of her classes were online and she graduated with a 4.0 GPA. In addition to her studies, Emma is involved in 4-H. Following her combined high school and Yuba College career she plans to attend a four year college to pursue computer science and graphic design.



Yuba City's **Shivam Khosla** graduated from Yuba College in the spring of 2021 with an Associate of Science for Transfer in Mathematics as well as an Associate of Science in Natural Sciences. He was named a recipient of the University of California Regent's Scholarship. He plans to attend UC Davis where he will pursue a degree in mechanical engineering.

Shivam is a first-generation college student, having immigrated from India during his sophomore year in high school. When he first arrived in the United States, he did not speak English, but is now fluent. After learning English, he began to excel in his studies,

and, while still in high school, he enroll in Yuba College courses. At Yuba, Shivam participated in both the Extended Opportunity Programs & Services (EOPS) and Math, Engineering, Science Achievement (MESA) programs, and credits their support for helping him succeed.

Brian Baker, a graduate of the Yuba College Police Academy was recently named the Chief of Police for the city of Yuba City. Baker joined the Yuba City Police Department in 1994 following his graduation from Yuba College and has spent his entire 27 year career serving the residents of Yuba City.



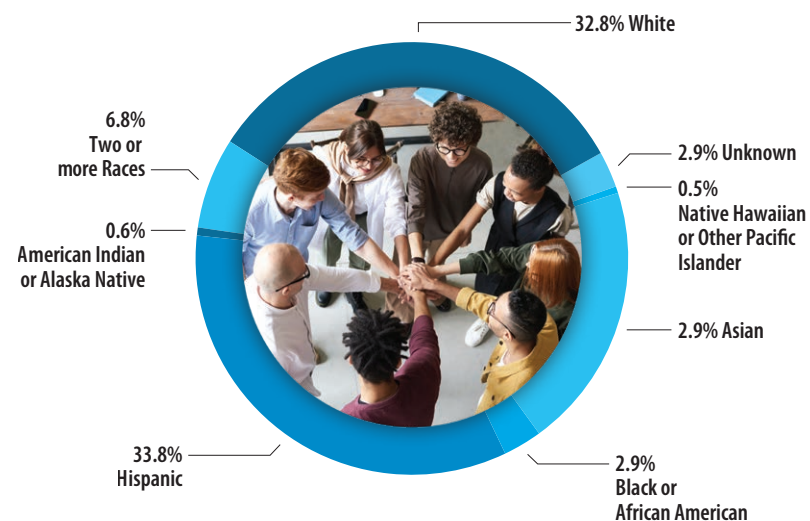
A CARING COMMUNITY

DUSTY'S PANTRY

Dusty's Pantry is a vital resource for students that face food insecurities. Never has the need for the pantry been more vital than during the pandemic. Prior to the pandemic, a statewide survey indicated that 56% of community college students live in a state of food insecurity, and the pandemic placed many more students in need. Funded through charitable contributions, Dusty's Pantry provides healthy snacks and meals for students and their families throughout the year, which helps students stay focused on their educational objectives.



ETHNICITY



Congratulations 2021 Graduates!

you make us
#yubaproud



YUBA
College



YUBA COLLEGE

SUPPORTING OUR STUDENTS



YUBA COLLEGE FIRST YEAR EXPERIENCE

The Yuba College First Year Experience (FYE) Program helps first time college students transition into a college setting. FYE prepares students academically, personally and professionally. Students are part of the two-year Yuba College Promise program, participate in English, Math and transfer course cohort receive personal and career counseling are supported by a Peer Mentor and participate in activities to explore educational and career aspirations.



PUENTE PROJECT

The Yuba College PUENTE Project is designed to improve the college-going rate for students from California's underrepresented communities. Students enrolled in PUENTE Program receive the support of a designated counselor for academic, personal and career counseling; participation in english and counseling cohorts; mentoring support to build the social and cultural capital for future success; and the ability to participate in conferences and leadership training. At the end of the academic year, a special PUENTE Program celebration is held to recognize the graduating students that participated in the program.



EOPS

The Extended Opportunity Program & Services (EOPS) provides eligible students a network of direct support services. Focused on assisting students who are low income and educationally disadvantaged, students in the program are part of a three-semester cohort for summer, fall and spring. EOPS will help prepare students for their time at Yuba College. They receive financial assistance support, are connected with college faculty and staff and a wide variety of college resources, receive guidance on selecting and applying to four-year colleges and universities, and receive the support and guidance of a personal counselor.



DISABLED STUDENTS PROGRAMS AND SERVICES (DSPS)

The Yuba College Disabled Students Programs and Services (DSPS) provides support services and academic accommodations to ensure access for students with disabilities consistent with the educational offerings of Yuba College. The mission of DSPS is to provide equal access and opportunity for individuals with disabilities while attending college. DSPS seeks to encourage and foster independence for students' attainment of their personal and academic goals. DSPS helps to level the playing field so students with disabilities can succeed with distinction.



SUPPORT THE COMMUNITY

Giving back and supporting the community is an important part of being a community college. During the pandemic Yuba College staff and athletes exemplified this value through supporting the work on the Yuba Sutter Food Bank. On different occasions, Yuba College Classified CSEA employees and members of the Women's Soccer Team volunteered their time to assist with off-campus food distributions of the Food Bank.

YUBA COLLEGE PROUD - QUALITY STAFF & FACULTY

The backbone of Yuba College are the individuals that provide students with counseling and other services, maintain the campus, and teach in the classrooms. Guided by core principles such as student success, excellence in teaching, inclusion, collaboration and integrity Yuba College is proud of the individuals that make up their team.



Silvia Gonzalez is one of those individuals and she was recently honored as a Classified Employees of the Year by the California Community Colleges Chancellor's Office. Silvia has been at Yuba College since 2006, first as an EOPS student worker and currently as an EOPS Specialist. She supports students who are disadvantaged by social, economic, educational, and linguistic barriers. Her efforts to advocate for Dreamers, foster youth, single parents, and other minoritized groups have had a positive impact on Yuba College. Silvia says that she is driven by her current and former students who often contact her to thank her for pushing them to be all they can be.



Doug Cornelius is starting his 20th season as coach of the Yuba College Men's Basketball program. Having the 2020 season cut short by the pandemic and the 2021 season completely eliminated, he is excited to get his team back on the court. He has made Yuba College a destination for basketball players because he cares about the student-athletes, will do all he can to help them get scholarships and move on to the next, and because the 49ers win. During his tenure Yuba College has won 14 conference titles. According to the coach, being at Yuba is "a dream job, I get to wear shorts and a t-shirt to school. I love teaching my classes."

FACILITIES REFRESH

The Yuba College is 60 year old campus with exceptional programs and services taking place in at times less than ideal facilities. With a limited number of students on campus during the past year the college leadership in conjunction with Maintenance & Operations prioritized projects to provide a more welcoming and efficient environment for students and staff. A number of buildings that had fallen into disrepair and are no longer used have been razed; the campus is receiving a coordinated new look with vibrant colors and signage, and in May of 2021, after being postponed an entire year by the pandemic, and landscaping refresh was provided thanks to a generous gift from the Yuba City, Marysville and South Yuba County Rotary Clubs.



COMMENCEMENT 2021

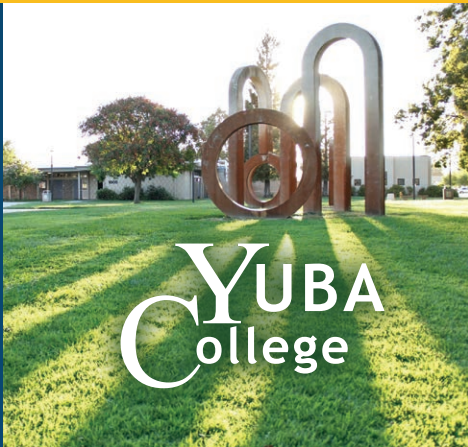
With the continuation of the pandemic Yuba College recognized the achievements of their graduates with a drive-through Celebration and a virtual commencements.



Faculty and staff from throughout the campus participated in cheering on the more the 220 graduates that participated in the drive through Celebration and more than 550 other individuals were celebrated in the virtual commencement.



Special ceremonies were held for the Nursing, Radiation Technology, Public Safety Academy and Fire Academy students.



FOUNDATION

YUBA COMMUNITY COLLEGE DISTRICT

SUPPORTING OUR STUDENTS

Founded in 1972, the focus of the Yuba Community College District Foundation is to provide increased opportunities for Woodland Community College and Yuba College students and support their success. The Foundation does this by seeking, managing and administering funds for the betterment of student-centered programming and services.

Supporting Students is Priority One

During the past year, the Foundation, in partnership with volunteers, faculty and staff at Yuba and Woodland Community Colleges supported the district with \$311,886 to provide scholarship, fund emergency and basic need, and support student services.

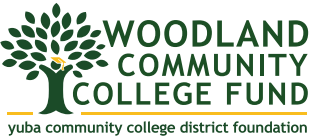
Scholarships: More than 140 privately funded scholarship opportunities totaling more than \$153,949 were awarded to students. The Foundation has 97 designated scholarship Funds, including 39 endowed scholarships. Each scholarship fund offers between one and 30 scholarship on an annual basis, each with its own criteria. Information on Foundation scholarships and how they can be supported can be found at yccdfoundation.org. The following are examples of the Foundation's scholarship offerings.

Emergency, Basic Needs & Student Services: \$74,959 of support helped fund campus Food Pantries, provide emergency grants, support students from Foster care backgrounds, upward bound, TRiO, DSPS and other student service programs.

Technology Support: The Foundation funded the purchase of laptops and internet hotspots to provide students with online access in support of classes moving to online formats as a result of the pandemic.

Our Campus Funds

The Foundation receives charitable gifts on behalf of both Woodland Community College and Yuba College through the designated college funds: Yuba College Fund, Woodland Community College Fund, Colusa County Campus Fund, and the Lake County Campus Fund.



FOUNDATION BOARD OF DIRECTORS

- Wayne Ginsburg, Chair

Marcia Stranix, Secretary

Eileen Schmidtbauer, Treasurer

John Cassidy

Jared Haste
- Jesse Ortiz

Richard Teagarden

Dr. James Houpis

Dr. Sonja Lolland

Dr. Tawny Dotson

Dr. Art Pimentel

The Endowment

The Foundation Endowment had a June 30, 2022 balance of \$10,360,000. Including the Foundation's reserve, there are 39 individual funds in the endowment, each designated for a specific purpose. The endowed funds of the Foundation are:

District Funds

- Stephen & Sheila Epler Scholarship
- Rose/Alvin Huckins Memorial Scholarship
- Deborah Richter Memorial Scholarship
- Harold Sawtell Scholarship
- Elmer & Clemmie Stohlman Scholarship
- Ernest & Irma Wettstein Memorial Scholarship

Woodland Community College Funds

- Beeghly-Merritt Memorial Endowment
- Bigelow Endowment
- Officer Natalie Corona Memorial Scholarship

Yuba College Funds

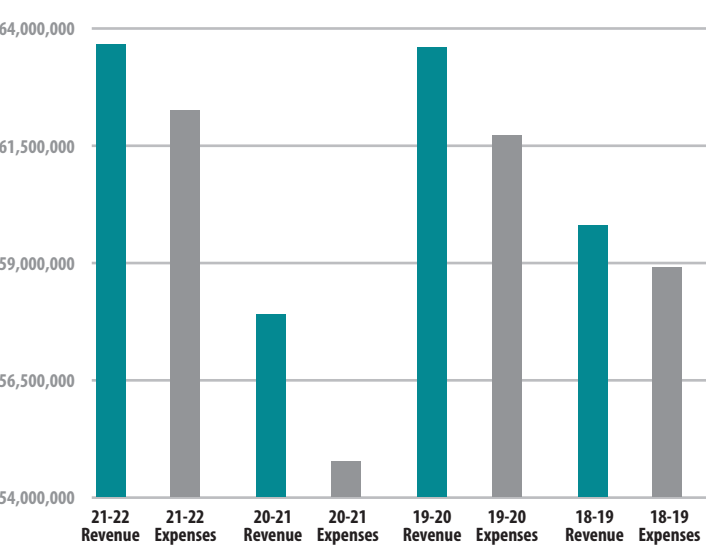
- Amar Kaur Bains Memorial Scholarship
- Gurpal Singh Bains Memorial Scholarship
- William Dexter Black Scholarship
- Scott Evan Chew Memorial Scholarship
- Grace Clement Scholarship
- Davis Memorial Scholarship
- Tony Deegan Memorial Scholarship
- Diane Pruim Dowden Memorial Scholarship
- Ted Dress Scholarship
- Gary Engelken Scholarship
- Jack Feldman Memorial Scholarship
- Eileen Frye Memorial Scholarship
- Patrick Gallagher Memorial Scholarship
- Gern Music Scholarship
- Don Hubbard Memorial Scholarship
- Reita Huckins-Bell Memorial Scholarship
- Lamer-Peri Memorial Scholarship
- Don Laughlin Memorial Scholarship
- Brian Meilback Memorial Scholarship
- Monnot, John and Freda Monnot Scholarship
- Kimberley Kettmann Memorial Nursing Scholarship
- Kewal Singh Nagra Scholarship
- George and Gaye Nicolau Endowment
- Suzette Mary Shanahan Memorial Scholarship
- Albin Sluzalis Memorial Scholarship
- Tierra Buena Women's Club Scholarship
- Paul J. Welch Memorial Scholarship
- Mark White Memorial Scholarship
- Yuba City Women's Club Scholarship
- Yuba College Scholarship
- Dr. Fred Smiley Scholarship

DISTRICT FINANCIAL HEALTH

YUBA COMMUNITY COLLEGE DISTRICT FINANCIAL INFORMATION

The Yuba Community College District has been a responsible steward of its' financial resources and strives to maintain a balanced budget. The Governing Board of the District adopted a balanced budget for Fiscal Year 2021-22 in July. The total operating Budget for the district is \$62.27 million with a projected surplus of \$1.26 million.

The graph below reflects the district's revenue and expenditures trends for the past three years and the budget for Fiscal Year 2021-22:



The district received \$11,418,782 in CRRSAA Act funding. The district was required to spend \$2,685,996 for student awards with the remainder of \$8,732,786 being used to support institutional expenditures. In the American Rescue Plan, the district's allocation was \$20,367,018. The District is required to spend at least 50% of this funding for direct support with the remainder being used for institutional needs. The district is in the process for determining the criteria for its' student awards and for funding institutional needs.

EMPLOYEE PROFILE (as of June 30, 2021)

Number of Employees

- Faculty - 672
- Full Time – 127 (14.2%)
- Adjunct – 545 (61.0%)
- Classified Employees – 175 (19.6%)
- Administration & Supervisors – 47 (5.3%)

TOTAL EMPLOYEES - 894

Employees by Location

- Woodland Community College – 362 (40.5%)
- Yuba College – 491 (54.9%)
- District Services – 41 (4.6%)

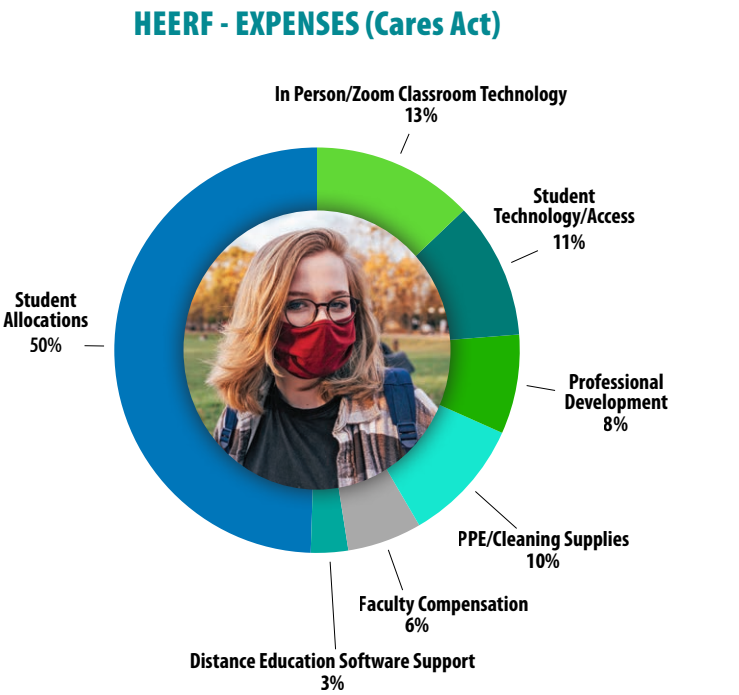
Gender

- Female – 493 (55.1%)
- Male – 398 (44.3%)
- Unknown – 3 (.3%)
- Ethnicity
- White – 365 (40.8%)
- White Non-Hispanic – 172 (19.2%)
- Pacific Islander – 18 (2.0%)
- Black/African American – 33 (3.7%)
- Asian – 48 (5.4%)
- Hispanic/Latino – 122 (13.6%)
- Asian Indian – 23 (2.6%)
- American Indian/Alaskan – 14 (1.6%)
- Other/Unknown – 99 (11.1%)

COVID-19 FEDERAL STIMULUS FUNDING ALLOCATIONS

As a result of the pandemic, Yuba Community College District has been allocated federal Higher Education Emergency Relief Fund (HEERF) through the Cares Act, Coronavirus Response and Relief Supplemental Appropriations Act (CRRSAA), and the American Rescue Plan (ARP). HEERF funding was provided to institutions of higher education to provide emergency grants to students whose lives were disrupted by the COVID-19 pandemic and to help fund the necessary changes required for institutions to transition to distance education. The district received a total of \$5,371,992 in Cares Act funding.

The following pie chart reflects the percentage spent by each expense category:



2020-21 DATA

(Source: Enrollment Snapshot Report)

Headcount:

Yuba College	8,645
Woodland Community College	6,791
Total	12,155

Enrollment:

Yuba College	30,886
Woodland Community College	18,628
Total	49,514

LOCATIONS

Yuba Community College District Office

425 Plumas Blvd., Suite 200, Yuba City, CA 95991

Phone: (530) 741-8949

Colusa County Campus

99 Ella Street, Williams, CA 95987

Phone: (530) 668-2500

Lake County Campus

15880 Dam Road Extension, Clearlake, CA 95422

Phone: (707) 995-7900

Sutter County Campus

3301 E. Onstott Road, Yuba City, CA 95991

Phone: (530) 741-6700

Woodland Community College

2300 E. Gibson Road, Woodland, CA 95776

Phone: (530) 661-5700

Yuba College

2088 North Beale Road, Marysville, CA 95901

Phone: (530) 741-6700

