



Shaping

YUBA COMMUNITY COLLEGE DISTRICT

Tomorrow's Leaders

Spring 2009 Volume V, No.1



YCCD Board of Trustees Authorize Purchase of Land for Future Sutter Facility

In This Issue

- Yuba Community College District 1-2
- Yuba College—Clear Lake Campus . . . 3
- Yuba College 4-5
- Citizens' Bond Oversight Committee Annual Report 6-7
- Woodland Community College . . . 8-10
- Yuba Community College District Foundation 11-12

YCCD Board of Trustees

- Trustee Alan Flory, President/Chair
- Trustee Jim Buchan, Vice President/Vice Chair
- Trustee Xavier Tafoya, Board Clerk
- Trustee Brent Hastey
- Trustee George Nicholau
- Trustee Ben Pearson
- Trustee Leela Rai
- Student Trustee Juan Cervantes

Chief Executive Officers

- Dr. Nicki Harrington, Chancellor, YCCD
- Paul Mendoza, President, Yuba College
- Dr. Angela Fairchilds, President, Woodland Community College

The Yuba Community College District (YCCD) Board of Trustees, at their regularly scheduled meeting on Sept. 10, 2008, authorized the District to purchase 20 acres of property in north Sutter County off of East Onstott Frontage Road at State Route (SR) 99, between Pease and Eager Roads. This site will be home to the new Yuba College Educational Outreach Facility. The facility will house 20 classrooms, student services operations and faculty offices. Also located on the site will be the Small Business Development Center (SBDC), the District Board Room and administrative offices.



Future Location of Sutter Facility

YCCD selected the site from an original list of 12 options, which was then narrowed down to the two top sites. The final two sites were selected based on accessibility, impact on future traffic patterns, visibility, and capacity. EDAW, Inc., an environmental planning design firm, provided further analysis to determine which of the two sites most effectively minimized the potential for significant environmental impacts and met the needs and objectives for the project. EDAW determined that the East Onstott Frontage Road property presented the least environmental constraints and issues that required mitigation, as extension of utilities and annexation of the property into the City of Yuba City would be more reasonably achieved relative to the alternative site. In addition, the East Onstott Frontage Road property provides extremely high visibility from SR 99.

Based on these determinations, the District moved forward with appraisal and negotiation of terms with the property owner. Terms that were satisfactory to both parties were established and the Board approved an agreement for purchase of the aforementioned property for \$3.6 million upon completion of city annexation and infrastructure development. An architect has been hired to design the facility, with construction anticipated to begin during the 2009-2010 academic year.

“When Sutter County voters approved Measure J, they did so with the understanding that a community college educational facility would be brought to the county for the first time. This is the initial step in making that a reality,” said Dr. Nicki Harrington, YCCD Chancellor. “We couldn’t be more excited at the opportunity this presents to provide expanded and ongoing educational services to our Sutter County residents.”

Trustees Leela Rai and Jim Buchan, who represent Sutter County Trustee Area II, echoed this sentiment, noting Sutter’s long standing desire for a public higher education institution in the county.



Chancellor's Statement



Dr. Nicki Harrington

On behalf of our colleges and the Board of Trustees, it is my pleasure to present to you the latest edition of the Yuba Community College District (YCCD) newsletter, *Shaping Tomorrow's Leaders*. As you can see from the stories in this edition, 2008 was a tremendous year for YCCD. For starters, Woodland Community College (WCC) received its accreditation, making it the 110th community college in the state and the second college in the

District. In addition, YCCD acquired, through Measure J dollars, 20 acres of land in North Sutter County, which will be the future home of the Yuba College Educational Outreach Facility.

In this edition you will also find updates on current events at Yuba College, Woodland Community College, the Clear Lake Campus, and the District as a whole. The Measure J Citizens' Bond Oversight Committee's first ever Annual Report to the Community can also be found in this edition, as well as a section devoted to our YCCD Foundation, which includes a piece on the historic \$50 million Osher Foundation Endowment for community colleges. The goal of this newsletter is to keep the community informed of the District's progress, challenges and opportunities in serving the residents of the North Central Valley Region.

It is clear that 2009 is presenting both challenges and opportunities for all of us. The biggest challenge facing our District is the deteriorating state of our nation's economy. Statewide budget cuts are looming, while we are simultaneously experiencing tremendous student population growth

at our colleges. Thus, now more than ever, it is imperative that we are sound fiscal stewards of the public's dollars to ensure that we continue to provide quality higher education services to the region. YCCD is committed to prudent fiscal management, as is evidenced by our 7 percent reserve and the recent Measure J audit, which showed that Measure J dollars are being spent wisely.

Despite the gloomy economic picture, 2009 still presents a great deal of opportunities. YCCD is leading the way in developing new career technical education programs that will help revitalize the economy by creating a highly skilled workforce ready to work in the "green collar" jobs of tomorrow, with the prime example being Yuba College's Automotive Technology Department's Advanced Transportation, Hybrid and Alternative Fuel Program (See p. 5). Furthermore, YCCD campuses remain committed to providing our students with the basic skills necessary to attain academic and workforce success. Similarly, concurrent enrollment opportunities continue to exist for our younger cohort of students, providing an accelerated and more affordable education for our students, as well as a more quickly prepared employee base for our region's employers.

These are tough times we face. However, with your ongoing support we will continue to provide relevant, responsive higher education services to students and communities across the North Central Valley Region.

Sincerely,

Dr. Nicki Harrington, Chancellor, YCCD

Employee Spotlight: Dr. Beatriz Espinoza



Dr. Beatriz Espinoza

Dr. Beatriz Espinoza, Yuba Community College District's Vice Chancellor of Educational Planning and Services, is a veteran educator who has worked in higher education for over 22 years. During that time she has served as a faculty member, researcher, counselor, and in numerous administrative roles. In the last 10 years, Dr. Espinoza's work has been specific to community college administration at multi-college districts and at single rural colleges in the states of Texas, Arizona and Illinois. Thus, her arrival to California, and specifically YCCD, came at a very opportune time last year, with Woodland Community College receiving its accreditation and becoming the 110th community college in the state and the second college within the District.

Dr. Espinoza looks forward to the opportunities the future will bring.

partnerships with local, regional, state, and national entities in order to ensure that we are providing an innovative educational curriculum and keeping up with emerging technologies and workforce needs," Dr. Espinoza said. "I welcome the opportunity to add my expertise and input to an already accomplished District team that shares a commitment to student success."

In addition, Dr. Espinoza's vision is to have the Educational Planning and Services Department be a catalyst for economic stimulus in the region during these rough fiscal times.

"The goals are to grow our Foundation and develop new revenue streams for our institution, as well as expand the services that our Small Business Development Center provides to companies so that we can expand our local economy, and maintain strong articulation agreements with our regional universities to ensure that our students can transfer in a timely and cost-effective manner," said Dr. Espinoza.

Dr. Espinoza holds a Bachelor of Science in psychology from the University of Texas-Pan American, a Master of Science and doctorate in rehabilitation psychology from the University of Wisconsin-Madison, and a post-doctorate in the Community College Leadership Program from the University of Texas at Austin.

"As we venture into being a multi-college district, we must strategically plan for the future and expand our

Clear Lake Campus Brings Full-Time Business Computer Applications Instructor on Board

With enrollment up 15 percent from last spring, the Clear Lake Campus (CLC) continues to experience tremendous growth. To better accommodate this growing student population at CLC, Mickie Main was recently hired as a full-time instructor to teach Business Computer Applications (BCA).

Main is now the 11th full-time instructor teaching at CLC. Main began her new position at the start of the fall semester and teaches BCA, as well as some classes in the computer science and information technology departments.

Prior to becoming a full-time instructor, Main had been teaching as an adjunct at CLC since 1998. She also taught classes at the Konocti Unified School District and for the Lake County Office of Education. Main holds an Associate Degree in computer science from CLC and



Mickie Main

has a vast amount of industry training, including Computing Technology Industry Association (CompTIA) A+ certification, which demonstrates competency as a computer technician. She is also a certified instructor through the Cisco Network Academy.

"I am extremely excited for the opportunity to continue my teaching career at CLC as a full-time instructor," said Main. The best part about working at CLC is seeing the students' determination, efforts and successes. It gives me tremendous joy to be able to help students find jobs working with computers and watching them pursue their dreams."

Ten different BCA classes are being offered during the fall at CLC, covering a wide array of computer applications, such as Microsoft Suite, exploring the Internet, digital imaging and Web page management and design. In the future, CLC plans to develop new BCA classes to expand students' knowledge in this area.

Clear Lake Campus Student Receives Associate Degree at Age 18



Campus Dean Bryon Bell with Ryan McGregor

The 2008 Clear Lake Campus (CLC) commencement ceremony was truly a historic one in that over 100 students petitioned for graduation. One of these graduates, Ryan McGregor, became the first concurrently enrolled student ever to receive his associate's degree at CLC.

McGregor was home-schooled in high school for his freshman and sophomore years. During that time, he was concurrently enrolled at CLC taking Spanish and Algebra classes. At the age of 16, McGregor tested out of high

school and became a full-time student at CLC. After finishing a one unit computer course this fall, McGregor received his Associate of Arts degree in general education.

"This has been a wonderful journey," said McGregor. "Over the last couple of years I have spent countless hours studying and I sacrificed a lot to get to this point. However, receiving my AA from CLC has made it all worth it, as I now have an advanced degree to show for all my time and effort."

McGregor plans on attending a four-year university sometime in the future, but for now is enjoying some well deserved time off.

"Ryan's academic accomplishments are truly remarkable," said Bryon Bell, CLC Dean. "He is a shining example of the caliber of students we have here at the Clear Lake Campus."

In the 2007-08 academic year, there were 49 students concurrently enrolled at CLC from local high schools (Lower Lake and Middletown). Concurrent enrollment provides high school students with an opportunity to become familiar with a college setting, take college level coursework, accelerate their education, have access to courses not taught at the high school and make effective use of summer breaks. In addition, the concurrent enrollment program provides tremendous cost savings as enrollment fees are waived. High school students interested in concurrently enrolling at CLC should fill out a release form signed by their parents and principal.

For more information on admissions to CLC, please visit www.yccd.edu/admissions/.

Liberal Arts/Fine Arts Building Project Nearing Completion

Yuba College students will now be able to enjoy the comfort and enhanced technological improvements in Building 1000, the Liberal and Fine Arts building located on the west side of campus.

The \$3 million building project, which was funded by both State and Measure J Bond dollars, was partially completed in January 2008. Although there are still some remaining “finishing touches,” the bulk of the project is complete. Constructed in 1962, the building is one of the original buildings on the Yuba College campus.

The scope of the project included a complete renovation of the existing building, including new heating and air conditioning systems, lighting and finishes to improve the learning environment in the classrooms. Where it was feasible, “green technology,” was utilized in such places as the lighting fixtures. As a part of Yuba’s commitment to sustainability, all of the future building on campus will take into consideration its environmental impact.

The building benefits from a revised floor plan, which included taking large, out-of-date lecture halls and “home economics” rooms, and creating more multi-purpose, multi-functioning “smart” classrooms. The east, west, and south wings have been furnished with new desks, chairs and audio/visual equipment, including flat screen TVs, computers



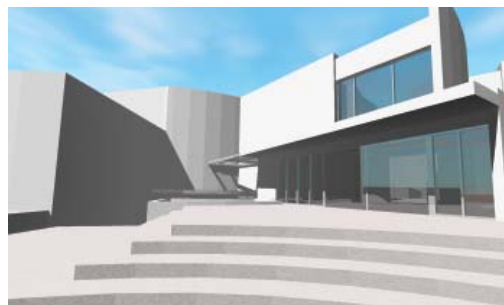
and digital visual presenters that allow a professor to project almost anything on to a screen.

Additionally, the classroom for speech classes has three computer work stations for students to work in groups and a permanent video camera and projection screen for reviewing and critiquing speeches. Each classroom received interior finishes, including floors, ceilings, lights, and furniture. The building also received much needed new landscaping, a beautiful courtyard, plumbing with larger restrooms and a new roof.

The north wing of the building, which houses the fine arts courses, including painting, drawing, ceramics and print making, received new ceramic kilns, a separate “clean” work space, and a secure area.

Curtain Up for the Theatre Remodel

For one year, beginning in July 2009, the lights will be dimmed and the stage will be dark in the Yuba College theatre. This next Measure J Bond construction project has gone through the design development phase and has been approved by the Department of State Architects. The theatre will re-open in time for the Fall 2010 semester.



Architect's Rendering of the Theatre Entrance

The \$3 million project consists of an architectural remodel of the existing building with the addition of a canopy over one of the entrances, two handicap lifts to improve accessibility, information technology storage, improvements to the overhead stage rigging system, and heating and air conditioning upgrades.

The building will also receive a new roof, which will fix an ongoing drainage and leakage problem. Additionally, the interior will undergo new carpeting, ceramic tile, paint, ceiling tiles, and lighting.

Listed below are the specific improvements that will be made to the various areas:

Lobby/Foyer: New flooring, paint, signage and lighting, and a new box office and concession area

Auditorium: Seats will be upholstered and arm rests will be refinished; carpeting will be replaced and the stage floor will be refinished

Restrooms: Additional stalls will be added to the women’s restroom along with new fixtures and lighting, and floor and wall tile

Dressing Rooms: A new countertop will be added, along with a makeup sink, additional storage areas and updated flooring and wall finishes

Green Room: Flooring and wall finishes will be replaced and updated, and new wardrobe cabinets and mirrors will be added

New Yuba College Math Annex and Writing Center

The Basic Skills Initiative (BSI) is a landmark collaborative statewide effort to increase student success rates among academically under-prepared community college students in the areas of mathematics, reading, writing and English as a Second Language (ESL). Last year, BSI was funded at \$33 million by the state.

Yuba College received \$144,146 of these BSI dollars, which it used to, among other things, establish the new Yuba College Hard Math Café Annex and the Writing and Language Development Center (WLDC).

The existing Hard Math Café is located adjacent to the Mathematics, Engineering, Science, Achievement (MESA) Center, and has always been very popular with students. The café, which offers drop-in math tutoring services and study groups, became so popular that it was often filled to capacity, making it unavailable for some students and difficult for faculty to hold office hours in the café.

“The new Math Café Annex is great,” said Monica Wellington, a second-year psychology student at Yuba College. “The Annex is bigger, providing us students with more room to talk and help each other out. This is by far my favorite place to study at Yuba College as I can participate in group study, get individual help from math instructors and tutors, or study on my own.”

Much like the math annex, the WLDC came about thanks to BSI funding. BSI dollars were used to start up the center in room 1251, furnish it, pay for its tutors and instructional associates, and provide state-of-the-art technology, such as wireless Internet access.

“This is a thriving example of what BSI funding can do,” said Kevin Dobbs, Yuba College Dean of Fine Arts/Language Arts. “We are extremely excited about this opportunity to more effectively serve our students at Yuba College.”



Writing and Language Development Center

The WLDC is strongly supported by the English, Reading and ESL faculty, many of whom have their office hours at the center. The WLDC provides weekly small group tutoring for English and ESL students, one-on-one writing consultations for all Yuba College students, drop-in English and ESL tutoring, free writing tip sheets for students and instructors, special one-hour writing topics workshops and ESL conversation groups.

“We want to help our students, providing them with a broad range of services so that they can achieve their academic goals,” said Brian Conderly, Yuba College English Instructor.

As the WLDC grows and becomes a more regular fixture on the campus, the plan is to create more services and workshops in the future.

For more information on the services provided by the WLDC, please visit www.yccd.edu/yuba/writingcenter.html.

Learning About Wiser Transportation Choices

Motorists were able to learn about the benefits of Alternative Fuel Vehicles (AFVs) through an exciting, nationwide celebration called National Alternative Fuel Vehicle Day Odyssey. Yuba College played host to Northern California’s only AFV Day Odyssey event.

National AFV Day Odyssey is coordinated by the West Virginia University-based National Alternative Fuels Training Consortium. The consortium, comprised of 35 higher-education institutions, including Yuba College, is dedicated to educating technicians and the public about clean, cost-effective vehicles.

The free event allowed visitors to come to the campus and learn about various ways that consumers can start to save energy and how companies such as CalTrans, PG&E and Yuba-Sutter Transit are working to inform their customers about cost-saving options and how they, as companies, are reducing their carbon footprint.



Students take a test drive in a fuel cell vehicle with Professor Mike Morse



Participants were able to test drive many hybrid vehicles, such as the Ford Escape and enjoy the quiet ride in a Toyota Fuel Cell Hybrid Vehicle from the Institute of Transportation Studies at UC Davis.

Yuba College, Shasta College and the Northern California Regional Energy Consortium industry partnership also had a display at the event. Students were able to learn about the consortium and the exploration of wind power and photovoltaic solar options and how methanol and glycerol work as alternative fuel sources.

Letter From the CBOC Chair



*Brent Hastey, Chair
Measure J CBOC, '07-'08*

Dear Community Members and Fellow Taxpayers:

Thank you very much for your continued support of Measure J, the \$190 million facilities bond measure for the Yuba Community College District (YCCD). As Chair of the Measure J Citizens' Bond Oversight Committee (CBOC), it is my extreme pleasure to introduce to you our First Annual Report to the community on the Measure J facilities bond construction program. Measure J was approved by YCCD area voters in November 2006. Since that time, the District and their program management firm, DMJM, have put a bond construction program together and implementation has begun. If you have visited our Yuba College or Woodland Community College (WCC) campuses recently, you have probably seen some of the renovation and construction work done in the last year. I encourage you to take a few moments to review this annual report and update yourself on what has transpired with the Measure J bond construction program over the last year.

The CBOC held public quarterly meetings in 2007 and 2008 to monitor the progress of Measure J projects. The CBOC is made up of nine members representing various organizations and groups within the District. For more information about our meetings and the makeup of the CBOC, please visit our Web site at www.yccd.edu/measurej/cboc.

Highlights of the construction year include; renovation of building 1000 at Yuba College; installation of wireless Internet technology (Wi-Fi) on YCCD campuses; the Gibson Road landscaping and parking lot improvements at WCC; and placement of 10 new portable classrooms at Yuba College to be used as swing space during construction.

In addition to construction, YCCD campuses are also moving ahead with design work on 19 projects, including the Theatre at Yuba College, Building 700 at WCC and the new Student Services Center for the Clear Lake Campus.

As for new sites, the YCCD Board of Trustees authorized the purchase of 20 acres of land in Sutter County for the

construction of the new Yuba College Educational Outreach Facility. The facility will house 20 classrooms, student services operations, and faculty offices. Also located on the site will be the Small Business Development Center (SBDC), the District Board Room, and administrative offices. The new site was purchased for \$3.6 million, which includes the installation of necessary infrastructure. Additionally, YCCD continues its efforts to acquire land for the Colusa County Outreach facility.

The first audits of the Measure J bond construction program found that the District was in conformity with the provisions of the bond measure. The CBOC has verified that expenditures of Measure J dollars have been properly made and that YCCD is in compliance with the requirements of Article XIII A, Section 1(b)(3) of the California Constitution. The CBOC commends the District and DMJM for a job well done. We very much appreciate the trust you have bestowed on us to oversee this important venture and we look forward to another successful year with the Measure J bond construction program.

Sincerely,



Brent Hastey, Chair, Measure J CBOC

2009 Update: CBOC Elects New Chair



Eleanor Mackensen

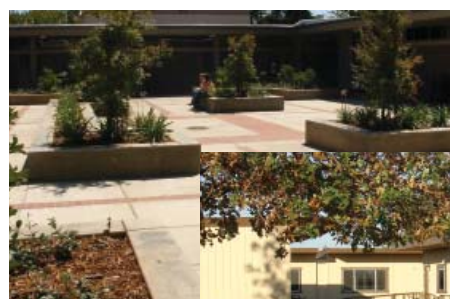
With Brent Hastey being elected this past November to the YCCD Board of Trustees, a new Chair was needed for the CBOC. At the committee's March 3rd meeting, the CBOC unanimously approved Eleanor Mackensen from Sutter County, representing the Taxpayers' Association, to be the next chair of the Measure J CBOC.

"I am pleased to have the opportunity to chair this important committee and look forward to our continued work ensuring that Measure J taxpayer dollars are expended as promised," Mackensen said.

We Are Hard at Work



*Left: Gibson Road Landscaping Project at WCC
Below: Yuba College Building 1000 Roofing Installation*



*Left: Yuba College Building 1000 Courtyard
Below: Swing Space at Yuba College*



Independent Auditor's Reports

According to performance audits conducted by the Certified Public Accounting Firm Matson and Isom, the Yuba Community College District (YCCD) has complied in all material respects with the performance requirements set by Proposition 39 and Measure J for both fiscal years 2006-07 and 2007-08. Measure J contains strict financial safeguards, including a requirement that independent audits be conducted annually to ensure that bond funds are spent on the classroom and facility improvements as identified in the original ballot language.

The performance audits concluded that Measure J bond revenues were expended only on the specific projects

approved by the voters and that no funds were used for salaries of school administrators or other operating expenses of the District. In addition, the auditing firm also found that the bond fund financial statements presented fairly, in all material respects, the financial position of the Measure J Bond Program as of June 30, 2008, and the results of its operation and its cash flows for the year then ended in conformity with accounting principles generally accepted in the United State of America. No material weaknesses were found and auditing tests disclosed no instances of noncompliance. As such, the CBOC approved the audits and submitted them to the YCCD Board of Trustees, who unanimously approved them.

2007-2008 CBOC Members

Name	County	Category	Name	County	Category
Marc Boomgaarden	Sutter	College Support Organization	Eleanor Mackensen**	Sutter	Taxpayers' Association
Karl Diekman	Yolo	Community Member At-Large	Amanda Martinez	Yuba	YCCD Student
Ernest Garcia, DDS	Yuba/Sutter	Business Member	Pauline van Muyden	Yolo	Community Member At-Large
Brent Hastey*	Yuba	Business Member	Cynthia White	Colusa	Senior Citizens Group
Thomas Hewlett, DDS	Lake	Community Member At-Large	(*Chair, **Vice Chair)		

Tax Rate

The maximum tax rate for the Proposition 39 bond is \$25 per \$100,000 of assessed property valuation for the entire Yuba Community College District. The current rate is \$16 per \$100,000 of assessed property value. A marginal increase is expected for the upcoming year.

Bond Series A and B

In May 2007, two national rating agencies, Standard & Poor's Ratings Services and Moody's Investors Service, awarded their "A" and "A1" ratings respectively for YCCD's first sale of Measure J General Obligation (GO) bonds. These positive bond ratings reflect the District's outstanding management practices, low debt levels, operational flexibility, population growth, and its sizeable property tax base (\$24 billion) that includes an eight county service area.

As a result of these positive ratings, YCCD was able to sell \$95 million in GO bonds at a favorable interest rate averaging 4.85 percent. This relatively low interest rate will translate into significant savings for District taxpayers. The bond sale process was jointly managed by the District's administrative officer, contracted financial advisor, the Yuba County Treasurer's Office, and the investment banker UBS Financial Services. The Capitol Public Finance Group functioned as the steward of the process guaranteeing that the public interest (taxpayer) was protected, and bond counsel ensured the legality of the sale.

Sustainability Policy

The YCCD Board of Trustees adopted Board Policy (BP) 6610 last year to ensure that Measure J contracts will only be awarded to design and construction companies who are LEED (Leadership in Energy and Environmental Design) accredited. This BP allows the district to place a high priority on designs that incorporate a reduction in daily and ongoing maintenance. Furthermore, with this policy YCCD seeks to reduce negative long-term effects on the environment and provide a greater environmental quality of life that will benefit students, faculty, staff, and the community.

Future Projects



Yuba College PE Complex Renovation



WCC Student Services Center Renovation



Woodland Community College Selects Official School Colors and Mascot

Dedicated students and months of hard work is what it took for Woodland Community College (WCC) to select its official mascot and colors. The Associated Students of WCC (ASWCC) began this historical

journey by holding several public meetings to choose mascot and color options, as well as a democratic process to make the final selection. ASWCC also sought advice and input from faculty and staff along the way.

"This was an exciting opportunity for students to be a part of history as their decisions and actions would last forever," said Erik Puleo-Coats, ASWCC President, 2007-08.

In October 2007, ASWCC finalized the mascot and color options to be placed before a vote of the student body in a two-day election. Students had a choice to vote for the coyotes, eagles, falcons, or knights as the mascot, along with four different color combinations. Over 500 students voted and when all the ballots were counted, the eagles, along with the colors of green, black and silver, received the most votes. ASWCC then made the recommendation to WCC President Dr. Angela Fairchild to have the eagle and green, black and silver be recognized as the official mascot and colors of the

college. The recommendation was adopted unanimously by the YCCD Board of Trustees in November 2007.

Once the mascot and schools colors had been adopted, one lingering question remained. What would the eagle mascot look like? Once again, Dr. Fairchild looked to the students for assistance. An art contest was suggested by students to help choose the eagle mascot logo. The winner of the contest would be awarded a new iPod personally donated by Dr. Fairchild. During a two month period, 15 different entries were submitted. Ultimately, the students voted to adopt the artwork of WCC student Lauren Burt. Burt's eagle mascot was consequently approved by Dr. Fairchild and the Board of Trustees in August 2008.

"It is exciting to be a part of WCC during this time," said ASWCC's current student body President Heather Evans. "There are so many positive changes that are benefiting students. I am happy to be a part of it."

The adoption of the new eagle mascot helps to shape WCC's own identity as the second accredited institution of higher learning within YCCD and as the 110th community college in the State of California.

"WCC students deserve a great deal of credit for all of their hard work and for taking pride in their college," said Dr. Fairchild.

Woodland Community College Becomes the 110th California Community College

The Board of Governors of the California Community Colleges met on Sept. 8, 2008 and officially recognized Woodland Community College (WCC) as the 110th community college in the state. The formal action follows WCC receiving initial accreditation on June 30 from the Accrediting Commission for Community and Junior Colleges, Western Association of Schools and Colleges (ACCJC of WASC). Prior to its accreditation, WCC was an educational center operating under the jurisdiction of Yuba College in Marysville.

"We are ecstatic to be recognized as an accredited college within the Yuba Community College District," said WCC President Dr. Angela Fairchild. "Since the mid 1990s, we have been working closely with state community college officials, our local governing board, district administrators, faculty, and staff to have the structure in place to stand on our own and get to this point. WCC's accreditation is a testament to the hard work of all these individuals and the overwhelming support we have received from the communities we serve."

WCC originally submitted its notification of intent to become a comprehensive community college in 1999. The ensuing years of effort culminated with a site visit by an ACCJC evaluation team in March and with the granting of accreditation

in June. At the September Board of Governors meeting, the Chancellor of the California Community Colleges confirmed that WCC had met all of the requirements necessary for college status and provided final approval of the college. This final approval results in WCC being funded and counted as a new college in the California Community College system.

A celebration commemorating the accreditation of WCC as the 110th California community college was held at the campus on Oct. 7, 2008. More than 100 community members, students, educators, state community college representatives, campus staff, local elected officials and community leaders enjoyed the festivities.

"This is a wonderful time for the Yuba Community College District," said Susan Houle, 2008 Chair of the YCCD Board of Trustees. "WCC's accreditation and confirmation as a comprehensive community college was one of our governing board's seven Strategic Directions for 2007-2011. We look forward to a very bright future as a multi-college district with two comprehensive colleges to serve our students and the unique needs of our local communities."



Sciences are Popular at WCC

The Woodland Community College (WCC) Biology and Chemistry Departments continue to see an increase in student enrollment and as such, are looking ahead to expanding course offerings. In four years, the sciences have gone from being housed in a temporary building to a new state-of-the-art facility with “smart” classroom technology and labs that include access to the Internet, projectors, and AV equipment. Classes in chemistry and biology are often full with students from 8 a.m. to 10 p.m., six days a week.

The Chemistry Department has one full-time instructor and five adjunct faculty. Julie Brown joined WCC as the full-time chemistry professor four years ago. She has a Bachelor of Science from Santa Clara University and a master’s from UC Davis. Before joining WCC, Brown taught math and chemistry at Yuba College for 13 years. She plans to expand the Chemistry Department’s curriculum to offer a more diverse selection of classes. Currently, the chemistry program serves over 200 students.

“I must admit that the best part of WCC is its students and staff,” Brown said. “When you work with students and enjoy the individuals you work with, work becomes fun and rewarding at the same time.”

The Biology Department has also grown, with over 350 students taking courses. Currently, WCC has three full-time faculty members, Dr. Barbara Rhode, Dr. Sheryl Shook and Dr. Ralph Robinson, and eight adjunct instructors, who offer a variety of courses including anatomy, microbiology and physiology. Dr. Rhode joined WCC in 2004. Before arriving at WCC, she taught biology at Rockhurst University and at Solano Community College. Dr. Rhode received her Bachelor of Science from William Smith College and her master’s and doctorate from Miami University at Oxford.

“Our first priority has been to meet the educational needs of our students,” Dr. Rhode said. “We have expanded our pre-nursing offerings in the last four years and now we want to expand the biology courses we offer at WCC, as well as provide more opportunities for those students who seek to transfer. Our students work very hard to achieve their goals, and we want to facilitate the process by offering the courses they need.”



From Left to Right: Dr. Shook, Dr. Robinson, Instructor Brown and Dr. Rhode

Dr. Shook received her Bachelors of Science from Cal Poly and her doctorate from UC Davis. Dr. Shook has been with WCC since 2006 and has enjoyed every minute of it.

“My students inspire me daily, and I love the beautiful range of experiences and cultures they bring and share in the classroom,” Dr. Shook said. “I’m thankful to be a part of WCC because it’s a community of faculty and staff who care so much about students and helping them to reach their goals.”

Dr. Robinson began teaching microbiology at WCC this year. Before joining WCC, Dr. Robinson taught biology at UCLA. Dr. Robinson received his Bachelor of Arts and master’s degrees from CSU Northridge and his doctorate from the University of Florida. He recalls the stark difference between teaching at UCLA and WCC.

“It is nice to actually get to know your students and work with them on a one-on-one basis,” Dr. Robinson said. “I feel that you make a direct impact with students when you can have that interaction. That is the best part of the community college system.”

The Biology and Chemistry departments offer a total of 18 classes and labs that include principles of biology, general zoology, general botany, introduction to microbiology, general chemistry, organic chemistry, concepts of chemistry, and more.



Gibson Road Landscaping Project

Measure J Projects on the Move

Your Tax Dollars at Work!

- The installation of wireless technology (Wi-Fi) on campus for Woodland Community College (WCC) students is complete.
- Grounds and landscaping improvements were completed at the end of November, giving WCC a brand new look.
- The Colusa County Outreach facility project is presently in the design stage. The District has currently budgeted \$3.5 million for a facility that will include classrooms, faculty offices, and offer a wide array of student services.
- The renovation of the 700 building and the creation of a One-Stop Student Services Center are moving forward. The \$2.75 million project includes a remodel of the existing building, with roof repairs, window upgrades, ADA access renovations, and repairs of the HVAC systems.





Colusa County Outreach Facility Building Concept

seeks to increase instruction and student services in the area. To that end, the passage of Measure J ensured that Colusa County would be allocated \$3.5 million to construct a permanent educational facility that will provide classroom space, faculty offices and a place to provide important student services, such as counseling and financial aid assistance.

Currently, WCC is working on finalizing a site acquisition. Once a central location has been selected, the environmental impact process will take place and within the next several months WCC will begin finalizing a services plan and

Colusa County Update

Colusa County continues to be a focal point of Woodland Community College (WCC), which

complete the budget for the project. With input by faculty, staff, students, and the community, WCC hopes to begin construction next year.

Also in Colusa, the WCC Upward Bound program headed by Timo Rico, has been extremely successful by posting a 100 percent retention rate. The program, which focuses on Colusa County only, provides guidance to students from the time they enter high school through the time they are accepted into a college or university. In its first year, the WCC Upward Bound program accepted 49 students.

WCC has several staff who serve the Colusa County community. If you have questions on courses, testing, orientations or course locations, please contact Nico DeAnda-Scaia at (530) 458-0326 at EXT. 104.

WCC's Foster & Kinship Care Education Program: Making a Difference in the Lives of Children

Woodland Community College's (WCC) Foster & Kinship Care Education Program (FKCE) began with a small grant in 1985 and has since grown to be a robust and financially sustained program. For the last 23 years, FKCE has held true to its mission to provide foster and kinship parents with educational support, parenting tools and specific training regarding the educational, emotional, behavioral and developmental needs of foster children. In partnership with the Yolo County Department of Employment and Social Services, WCC's FKCE delivers over 550 hours of education and training and serves over 500 participants annually to help care for the 400 infants and youth currently placed in foster care in Yolo County.

Hiedi Andersen and her husband Ed are county licensed foster and adoptive parents to three daughters and acclaim the benefits of attending classes.

"The knowledge garnered at FKCE workshops through the college is empowering," said Hiedi Andersen. "When foster

parents understand the juvenile court process, methods to deal with challenging behaviors and where to seek services, they not only become stronger parents, but model for the kids that it is okay to find and accept help."

Ed also understands the value and importance of the program.

"We are extremely grateful to be affiliated with the Foster and Kinship Care Education program and recognize that we would not continue to open our hearts and homes to help children without its support and guidance," Ed said.

WCC's FKCE program has received recognition at both the county and state level for its exemplary work. Lucy Berger of the CA Community College Chancellor's Office recently visited WCC and praised the program for its innovative curriculum and collaborative program expansion.

"This is another wonderful program that has a positive impact on our community, and most importantly, a positive impact in the lives of many children and families," said WCC President Dr. Angela Fairchild.

To find out more about foster care, adoption from foster care, or the licensing process, please visit the WCC FKCE Web site at www.yolofostercare.com. Should you have questions or want additional information, please call (530) 661-5772.



Jackie and Katie Adopted from Foster Care



Bernard Osher Foundation Endowment to Benefit YCCD Students



Governor Schwarzenegger greets Chancellor Woodruff at a press conference announcing the Osher Endowment. In the background, community college students, including Yuba College Phi Theta Kappa student Amber Stelly (third from right) partake in the festivities.

Faculty Member Steps Up to Provide Student Support



Professor Percy Ellis

Professor Percy Ellis of Yuba College was baffled at why so many talented business computing students were not choosing to take the exams required for certification in CompTIA and Microsoft. These certifications have been as valuable, according to Ellis, as the degree itself. The problem, he found, was that students whose financial aid packages covered tuition and books, did not cover

the rather lofty costs necessary to sit for each of these exams. Amidst so many competing financial stresses, disadvantaged students simply could not prioritize spending additional school-related dollars.

In a remarkable act of generosity, Ellis has decided to reimburse those who successfully complete either of these examinations. Through a one-time cash gift and through an additional monthly payroll deduction, Ellis will pay the examination costs for the first 10 students who pass either of these examinations during an academic year.

Ellis will likely garner additional internal support for this project. The faculty and staff of the Yuba Community College District have been immensely generous in bolstering efforts geared toward student success. Over the past five years, faculty and staff giving to YCCD Foundation's student support programs has averaged over \$20,000 per year.

On May 5, 2008, Governor Arnold Schwarzenegger and California Community Colleges Chancellor Diane Woodruff announced that the San Francisco-based Bernard Osher Foundation will provide up to \$50 million for scholarships to assist financially needy community college students. This is truly a historic gift in that it is believed to be the largest donation ever made to directly benefit community college students.

An initial gift of \$25 million will be distributed to the state's 110 community colleges based on each campus' full-time equivalent students. This gift will provide \$1,000 scholarships to about a dozen students at Yuba College and Woodland Community College starting in the Fall Semester of 2009, with the potential to benefit more students in the future.

During the next three years, the California Community Colleges and the Foundation for California Community Colleges will raise an additional \$50 million for which the Osher Foundation will provide a 50 percent match, up to \$25 million. By 2011, if the Endowment reaches its \$100 million goal, more than 5,000 students will be awarded scholarships annually.

"This is wonderful news for current and future YCCD students, as these additional resources make a higher education more affordable and accessible for many," said YCCD Chancellor Dr. Nicki Harrington. "This gift lends credence to the work that we do in training our workforce and preparing students for transfer to four-year institutions."

To further assist those students continuing with their education, the Osher Foundation has also pledged \$20 million in endowed scholarships to community college students transferring to University of California (UC) and California State University (CSU) campuses. This is significant for a majority of YCCD transfer students go to local four-year universities, such as UC Davis, Chico State, Sacramento State and Sonoma State.

The scholarship endowment will give top priority to students with the greatest financial need and those selected will be able to use the \$1,000 scholarships to offset the increasing costs of textbooks and other instructional supplies. To be considered, students must have completed 24 units toward their degree, be enrolled in at least six units, and qualify for the California Community Colleges Board of Governors fee waiver.

The Osher Foundation endowment will add to YCCD's already robust financial aid programs, which include scholarships, grants, work-study, and loans for full-time and part-time students. In 2007-2008, YCCD awarded over \$19 million in federal, state, private and institutional financial aid.

For more information on financial aid available at YCCD, please visit www.yccd.edu/financialaid.



Scholarship Availability Improves

Funding for YCCD Foundation scholarships has continued to improve in spite of volatile economic markets. During the past four years, the amount of available scholarship money has gradually increased from \$73,250 in 2006 to a current amount of \$120,737 that will be available in Spring 2009. Additionally, the number of scholarships has grown during these four years from 102 to 172.

This increase can be attributed to many positive steps taken by both the District and the Foundation Board of Directors over the past decade. Primary among these steps has been the effort to increase student support during a decade that has seen escalating costs in books and transportation for students. Enhanced scholarship opportunities have come through endowment gifts honoring Gurpal Singh Bains and Amar Kaur Bains, and a similar endowment put in place by Dr. Steve and Mrs. Sheila Epler. More recently, the Bernard Osher Endowed Scholarship, which is available to all California Community Colleges, added ten \$1,000 scholarships with a promise for further matching support.

Frugal investment and spending practices during this era have also ensured that funds are available during "rainy days," such as those currently at hand. Where many portfolios have seen huge losses during recent financial quarters, YCCD

Foundation has been able to distribute an additional \$4,000 to its endowed scholarships during this downturn.

Recognizing Wayne Ginsburg

During this period of improved scholarship support, Wayne Ginsburg has served as President of the YCCD Foundation. Ginsburg, who represents the Woodland area on the YCCD Foundation Board, served two terms as President, spanning the four years during which scholarship growth was significant.

Ginsburg, whose presidential term expired in July 2008, has been replaced by Vicki Bourn, a realtor who is also from the Woodland area. Ginsburg will continue to advocate for improved scholarship support as a member of the YCCD Foundation Board of Directors.



Wayne Ginsburg and Vicki Bourn

YUBA COMMUNITY COLLEGE DISTRICT
Shaping Tomorrow's Leaders
 Yuba Community College District
 2088 North Beale Road
 Marysville, CA 95901
 Ph: (530) 741-6700

Accredited by the Western Association of Schools and Colleges, and recognized as a fully accredited two-year Community College by the University of California, the California Community Colleges, the United States Office of Education, the Veterans Administration, and the American Association of Collegiate Registrars and Admissions Officers.

RESIDENT POSTAL CUSTOMER

Non-Profit Organization
 US Postage
PAID
 Marysville, CA 95901
 Permit No. 242