

Presentation for

Yuba Community College District Measure J Bond Program

**RFQ 10-001J On-Call Professional Services
Pre-Submittal Conference
February 24, 2010**

YCCD Measure J Bond Program RFQ 10-001J Pre-Submittal Conference

Welcome

George Parker

Director, Facilities Planning

Introduction of Program Management Team

- George Parker – Director, Facilities Planning, YCCD
- Malinda Bogdonoff – Director of Purchasing/Contracts, YCCD
- Dave Bachman – Senior Buyer/Contracts, YCCD
- Tasha Atteberry – Bond Accountant, YCCD
- Craig Fernandez – Program Director, AECOM
- Jim Daniel – Contracts Manager, AECOM
- Leah Hinckley – Program Controls, AECOM
- Dave Kendall – Scheduler/Construction Management, AECOM
- Bruce Brewer – Construction Manager, AECOM
- Barbara Tracey – Program Administrator, AECOM
- Ruslan Bachinsky – Construction Administration, AECOM

Agenda

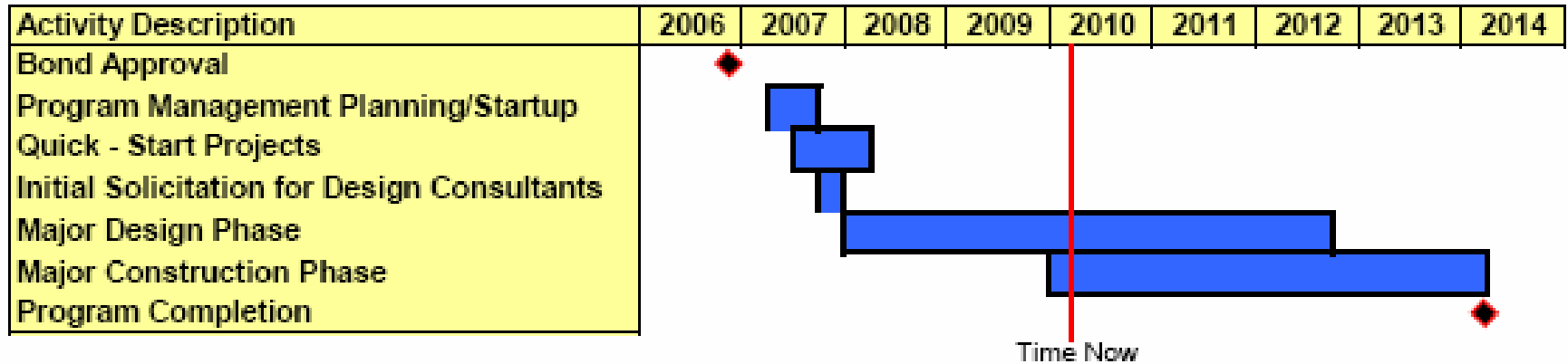
- Program Orientation / Status – George Parker
- RFQ Review – Jim Daniel
- Selection Process with Timeline – Jim Daniel
- RFQ Questions – Jim Daniel
- Questions & Answers (cards available at front of room)

Program Orientation

- Overview of Facilities
 - District
 - Sutter County Facility
 - Yuba College
 - Clear Lake Campus
 - Woodland Community College
 - Colusa County Outreach Facility
- History of Measure J
- Program Goals
 - Quality Projects = Quality Facilities
 - State-of-the-Art Facilities
 - Durable and Low Maintenance Facilities
 - District Sustainability Goals and Policies

Program Review

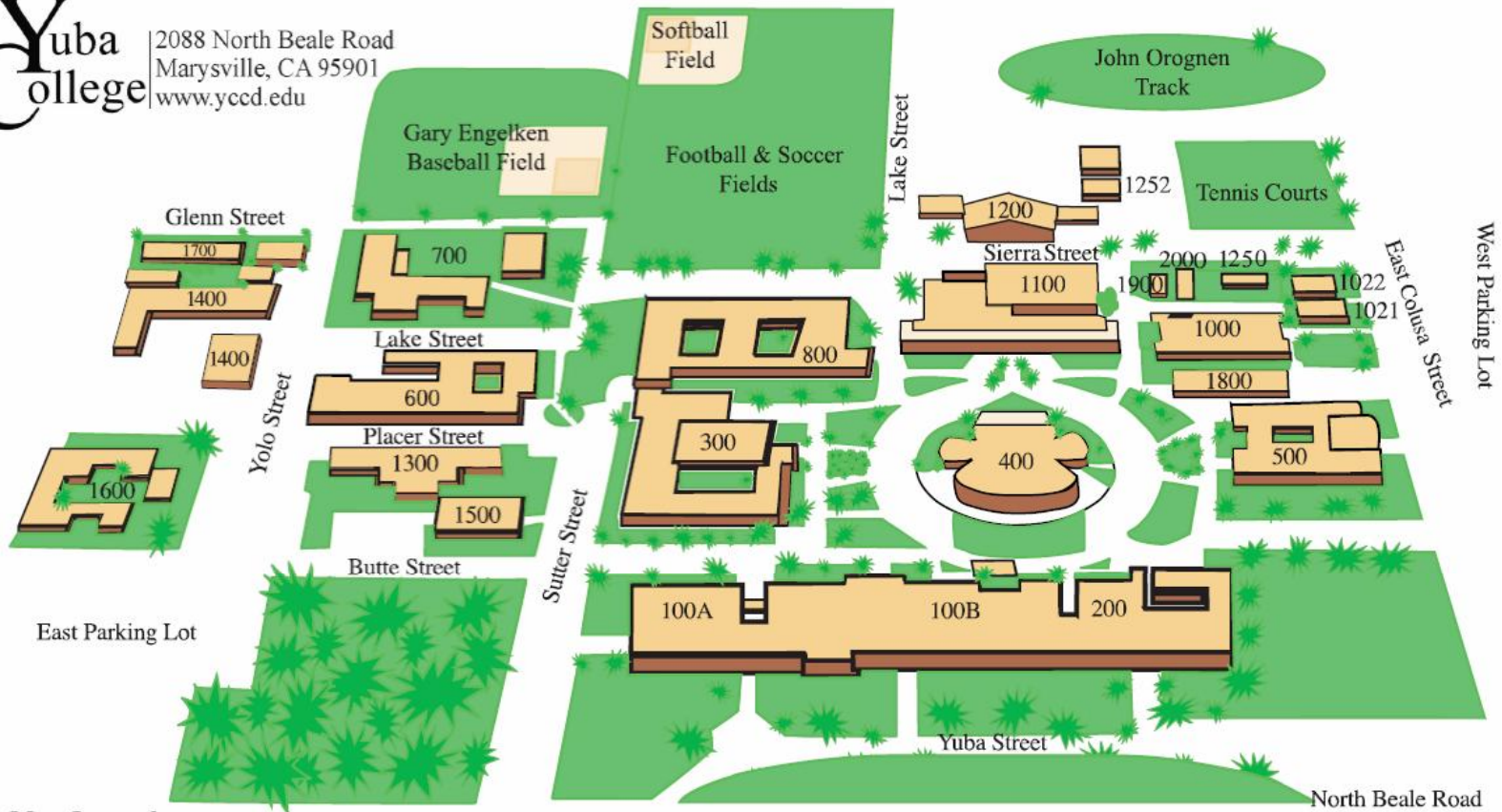
*Master Schedule
Measure J Program*



Yuba College – Marysville



2088 North Beale Road
Marysville, CA 95901
www.yccd.edu



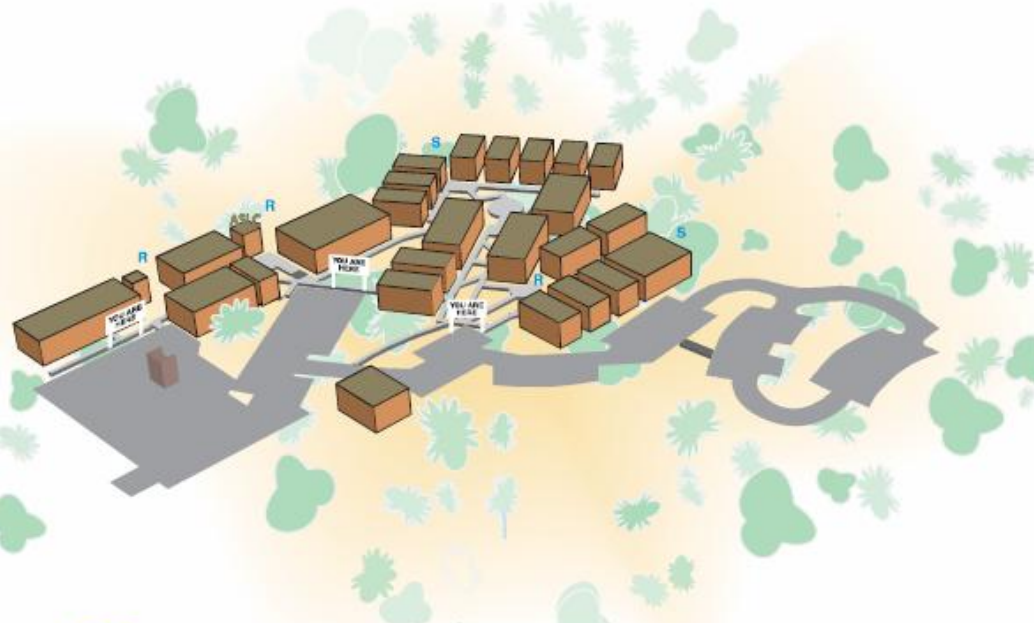
Map Legend

- | | | | |
|------|--|------|--|
| 100A | District Administration, Personnel | 1100 | College Success Ctr, ITV 2 Classroom, Learning Resources Center, Library |
| 100B | EOP&S, Financial Aid, Registration, Student Support Services | 1200 | Athletics and Gymnasium |
| 200 | Music | 1250 | Classroom |
| 300 | Yuba College Administration, Bookstore, Cafeteria, Campus Life | 1300 | Collins Hall, Foundation, Photography |
| 400 | Box Office and Theatre | 1400 | Maintenance, Print Shop |
| 500 | Business and Social Science | 1500 | Osuna Hall |
| 600 | Applied Arts, Science & Technology | 1600 | Warren Hall: Child Care Center, Police Dept |
| 700 | Engineering, Math, MESA & Nursing | 1700 | Automotive Body and Public Safety |
| 800 | Life & Physical Sciences | 1800 | Disabled Students & Veterans Services |
| 1000 | Fine/Language Arts | 1900 | Distributive Education Center, ITV 1 Classroom |
| 1021 | Classroom | 2000 | Adaptive Physical Education |
| 1022 | Classroom | | |

Program Review – Yuba College

| Yuba College - Marysville | | Construction Type | Square Footage | Estimated* Construction | Status |
|---------------------------|---|-------------------|----------------|-------------------------|--------------|
| J-02 | Bldg 100A – Administration Building | Renovation | 7,400 | \$ 500,340 | Design |
| J-03 | Bldg 100B – Student/Instruction Services | Renovation | 22,500 | \$ 2,589,940 | Design |
| J-04 | Bldg 200 – Music Department | Renovation | 7,500 | \$ 648,900 | Design |
| J-05 | Bldg 300 – Student Center / Bookstore | Renovation | 26,000 | \$ 1,567,400 | Design |
| J-06 | Bldg 400 – Theatre | Renovation | 14,000 | \$ 2,641,500 | Construction |
| J-07 | Bldg 500 – Business Dept. (Classrooms) | Renovation | 15,600 | \$ 5,964,460 | On Hold |
| J-08 | Bldg 600 – Applied Arts, Science/Tech | Renovation | 24,000 | \$ 200,000 | Construction |
| J-09 | Bldg 700 – Math/Engineering/Computer | Renovation | 174,000 | \$ 1,500,000 | On Hold |
| J-10 | Bldg 800 – Life Sciences & Nursing | Renovation | 31,400 | \$ 150,000 | Construction |
| J-11 | Bldg 900 – Utilities Services | Renovation | N/A | \$ 2,151,505 | DSA |
| J-12 | Bldg 1000 – Liberal Arts Consumer Ed | Renovation | 17,000 | \$ 1,500,000 | Complete |
| J-13 | Bldg 1100 – Library & Language Arts | Renovation | 42,000 | \$ 11,771,000 | Design |
| J-14 | Bldg 1200 – Athletic Dept & Gymnasium | Renovation | 50,000 | \$ 9,651,500 | Construction |
| J-15 | Bldg 1250 – ESL (Demolish Structure) | Demolition | N/A | \$ 200,000 | Not Started |
| J-16 | Bldg 1300 – Collins Hall – Staff Offices | Renovation | 14,000 | \$ 201,842 | Not Started |
| J-17 | Bldg 1400 – Maintenance/Print Shop | Demolition | 10,500 | \$ 884,822 | Not Started |
| J-18 | Bldg 1500 – Osuna (Demolish Structure) | Renovation | 11,200 | \$ 348,763 | Not Started |
| J-19 | Bldg 1600 – Child Development Center | Renovation | 13,000 | \$ 386,800 | Not Started |
| J-20 | Bldg 1700 – Admin Justice & Automotive | Renovation | 16,500 | \$ 75,873 | Not Started |
| J-21 | Bldg 1800 – Student Services | Renovation | 4,300 | \$ 163,995 | Construction |
| J-22 | Bldg 1900 – Distributive Education Center | Renovation | 2,100 | \$ 38,900 | Complete |
| J-23 | East Parking Lot (Included in J-25) | Renovation | TBD | \$ - | - |
| J-24 | New Soccer Field (Included in J-14) | New | N/A | \$ - | - |
| J-25 | Health & Public Safety Building | New | 65,000 | \$ 13,900,000 | Design |
| J-26 | Upgrade Press Box/Score Board, Etc. | Renovation | N/A | \$ - | - |
| J-27 | Pool Demolition (Included in J-14) | Demolition | TBD | \$ - | - |
| J-28 | Swing Space | Renovation | N/A | \$ 80,000 | Complete |

Yuba College - Clear Lake Campus




Clear Lake Campus
 15880 Dam Road Extension
 Clearlake, CA (707) 995-7900

- | | |
|------------|--|
| 100-A | Student Bookstore & Cultural Arts |
| -B | Student Lounge |
| -F/G | Restrooms |
| 200- | Library, Quiet Study Area, Transfer Center, Career Center Testing Center |
| 300-A | Science Lab |
| -B | Learning Center, GED Program |
| -C-F | Offices of Professors Alexander, Lyons, & Strik DSPS Services |
| 400-A | Business /Computer Lab |
| -B | Office of Professor Morgan |
| -C | Office |
| -D | Office of Professor Hanson |
| 401-A | Food Service Classroom |
| -B | Aromas Restaurant |
| -C | Offices of Professors Schoenherr & Papin |
| 402 | Student Services Center: College Administration, Financial Aid, EOP & S, CARE, Counseling |
| 403- | Restrooms |
| 500-A | Applied Arts Classrooms |
| -D | Photo Lab |
| 601-605 | Lake County Resource Center (601- Business Services) |
| 701-702 | Classroom, Meeting Room |
| 800-A/B | Yuba College Distance Learning |
| 801- | Child Care Center |
| 901-908 | Classrooms |
| Areas 'S'- | Smoking Areas |
| Areas 'R'- | Recycling Receptacles |

Program Review – Clear Lake Campus

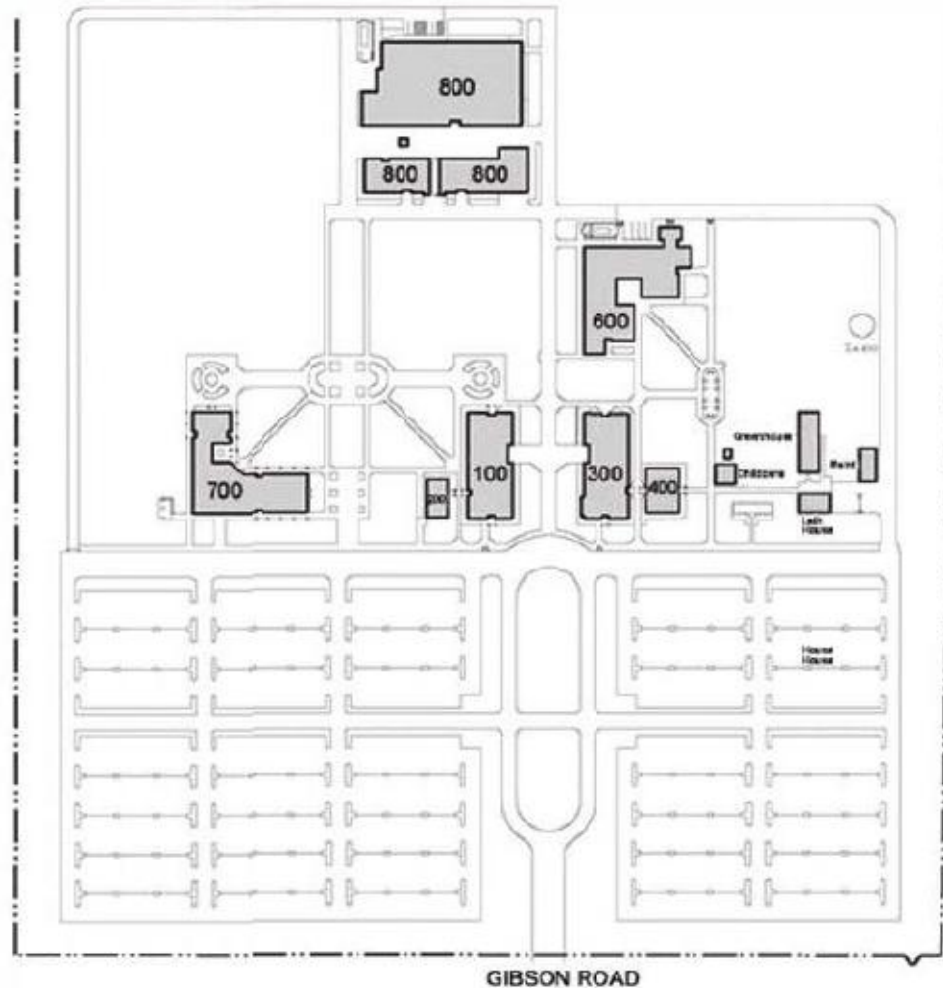
| Yuba College - Clear Lake Campus | | Construction Type | Square Footage | Estimated* Construction | Status |
|----------------------------------|--|-------------------|----------------|-------------------------|-------------|
| J-32 | Student Services Center | New | 30,000 | \$ 12,200,000 | Design |
| J-33 | Renovate Portables & Upgrade Utilities | Renovation | 15 Structures | \$ 1,150,331 | Not Started |

Woodland Community College



WOODLAND COMMUNITY COLLEGE

2301 E. Gibson Road Woodland, CA 95776



WOODLAND CAMPUS

LEGEND

| <u>BLDG.</u> | | <u>ROOM</u> |
|---------------------------|-----------------------------|-------------|
| 100 | President of the College | 112 |
| | Admissions & Records | 113 |
| | ASWCC | 119 |
| | Campus Police | 127 |
| | Classrooms | |
| | Conference Room | 114 |
| | Mailroom/Copy Center | 113B |
| | Student Lounge | 102 |
| Tutoring Center | 104 | |
| 200 | Follett's Bookstore | 201 |
| | Cooperative Work Experience | 205 |
| 300 | Classrooms | |
| | Business Computer Labs | 301/305 |
| | Nursing Lab | 314 |
| 400 | Ag-Plant Science/Art Labs | 401/402 |
| | Classrooms | |
| 600 | Dean of Instruction | 614 |
| | Biology Labs | 626/629 |
| | Chemistry Labs | 601/604 |
| | Classrooms | |
| | Computer Lab | 623 |
| | Conference Room | 621 |
| | Information Systems | 620 |
| Physics/Earth Science Lab | 625 | |
| 700 | Dean of Student Services | 711 |
| | CalWORKS | 740 |
| | CARE | 743 |
| | Counseling | 749 |
| | Distributive Learning | 732 |
| | LSI&S | 755 |
| | English/Math Computer Lab | 701 |
| | EOP&S | 742 |
| | Library | 732 |
| | Media Services | 726 |
| | Peer Counselors | 743 |
| | Transfer Center | 749 |
| | University Representatives | 742 |
| | Veterans Outreach | 745 |
| 800 | Learning Resource Center | |
| | Construction in progress | |
| | Completion Spring 2007 | |

Program Review

Woodland Community College

| Woodland Community College | | Construction Type | Square Footage | Estimated* Construction | Status |
|----------------------------|---|-------------------|----------------|-------------------------|--------------|
| J-34 | Performing Arts Center/Culinary Arts (State Funded) | New | 55,000 | \$ 30,646,200 | Not Started |
| J-35 | Renovate Building 700 | Renovation | 15,300 | \$ 2,000,000 | Construction |
| J-36 | Multi-Purpose Facility (State Funded) | New | 30,000 | \$ 11,878,200 | Not Started |
| J-37 | Soccer Field | Deferred | N/A | \$ - | |
| J-38 | Baseball Field | Deferred | N/A | \$ - | |
| J-39 | Multi-Building Renovations | Renovation | TBD | \$ 1,437,500 | Design |
| J-40 | Grounds Improvements | Renovation | N/A | \$ 521,500 | Complete |
| J-41 | Softball Field | Deferred | | \$ - | |
| J-42 | Colusa County Outreach Facility | New | 9,000 | \$ 2,543,420 | Construction |
| J-46 | Woodland CC M&O Equipment | | | \$ - | |

Program Review – Sutter County

| District Facilities / Systems | Construction Type | Gross Square Footage | Estimated* Construction | Status |
|-------------------------------|------------------------|----------------------|-------------------------|--------|
| J-01 | Sutter County Facility | 81,000 | \$ 21,061,987 | Design |

Review of RFQ

- **Goals of this Solicitation**
 - Continue to present the opportunities of Measure J
 - Encourage the submittal of qualifications to the District to refresh the existing pool of Professional Services providers
 - Reach out to local community
- **How this solicitation fits into the Big Picture**
 - Bi-Annual Recertification, if required
- **Concept of On-Call Services**
 - As required by program demands
- **Task Order Contract Format**
 - Task Order Values up to \$75,000 each
 - Cumulative Task Order values not to exceed \$150,000
- **Anticipated Services**

Review of RFQ

Anticipated Services

- Architectural/Engineering Services
 - Architectural Programming and Design
 - Mechanical, Electrical, Plumbing
 - Constructability Reviews
 - Civil Engineering
 - Structural Building Surveys
 - Utility Infrastructure Surveys
 - Surveying
 - Soils / Geo-Technical
 - Landscape Architecture
 - Hazardous Materials Surveys / Air Monitoring
 - Environmental Analysis
 - Security Systems / Planning
 - Value Engineering
 - Building Commissioning Services (LEED™)
- Land Use
 - CEQA
 - EIR
 - Traffic / Parking
- Construction-Related
 - Project Inspection (IOR)
 - Special Tests / Inspections

Selection Process / Timeline for RFQ 08-003J On-Call Professional Services

| | |
|---------------------|--|
| 02.24.10 | Pre-Submittal Conference |
| 02.26.10 | Questions pertaining to the RFQ due by 5:00 p.m. in writing via Facsimile (530.741.7115) or email (dbachman@yccd.edu) to YCCD Senior Buyer/Contracts. |
| 03.09.10 | SOQ Submittals Due no later than 2:00 p.m. |
| 03.10.10 – 04.11.10 | Initial review of submittals for responsiveness and prioritization. |
| Ongoing | Short lists (3 – 5 firms) for specific disciplines / professional services. Rankings determined. |
| Ongoing | Recommendations for award will be ongoing based on Measure J Program demands. |

RFQ Questions

- RFQ Questions due by 5:00 p.m. Friday, February 26, 2010.
- Submit via Facsimile in writing via Facsimile (530.741.7115) or email (dbachman@yccd.edu) to YCCD Senior Buyer/Contracts.
- District responses to questions regarding the RFQ, as well as any necessary addenda will be posted to, and only available on, the Measure J Bond website by close of business Tuesday, March 2, 2010.

YCCD Measure J Bond Program RFQ 10-001J Pre-Submittal Conference

Questions & Answers

(Does everyone have a card?)

The information presented herein is
subject to revision in response to Measure J Bond Requirements