

Presentation for

Yuba Community College District Measure J Bond Program

**RFQ 08-003J On-Call Professional Services
Pre-Submittal Conference
October 18, 2007**

YCCD Measure J Bond Program RFQ 08-003J Pre-Submittal Conference

Welcome

Rod Perry

Director – Bond Facilities Construction

Introduction of Program Management Team

- Rod Perry – Director, Bond Facilities Construction
- Malinda Bogdonoff – Director of Purchasing/Contracts
- Craig Fernandez – Program Director
- Jim Daniel – Contracts Manager
- Leah Hinckley – Program Controls
- Dave Kendall – Scheduler / Construction Management
- Barbara Tracey – Program Administrator
- College Project Managers
 - Yuba College – Craig Fernandez
 - Woodland Community College – To be determined

Agenda

- Program Orientation – Rod Perry
- Program/Project Review – Craig Fernandez
- Program Status – Craig Fernandez
- RFQ Review – Jim Daniel
- Selection Process with Timeline – Jim Daniel
- RFQ Questions – Jim Daniel
- Questions & Answers (cards available at front of room)

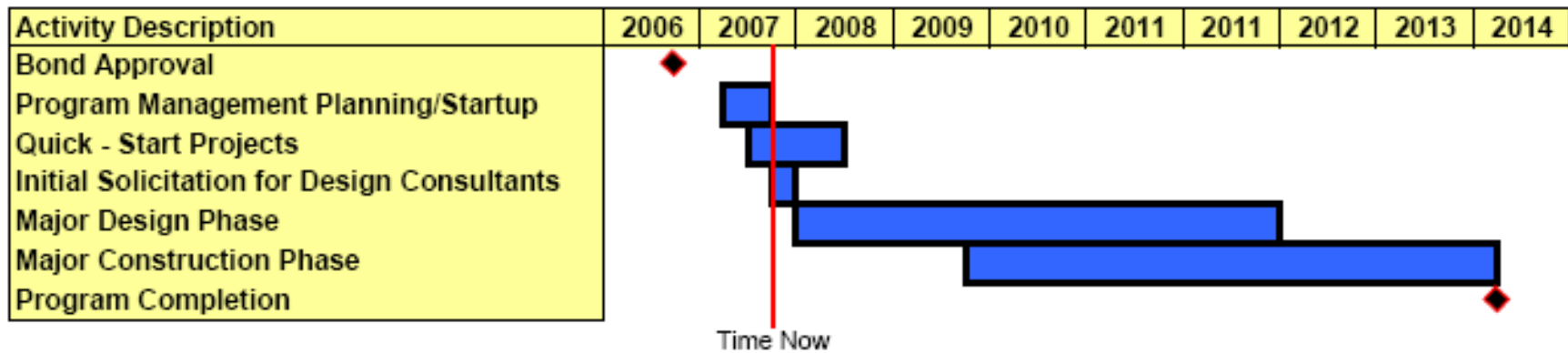
Program Orientation

- Overview of Facilities
 - District
 - Yuba College
 - Clear Lake Campus
 - Woodland Community College
- History of Measure J
- Program Goals
 - Quality Projects = Quality Facilities
 - State-of-the-Art Facilities
 - Durable and Low Maintenance Facilities
 - District Sustainability Goals and Policies

Program Review

Rev. 09.20.07

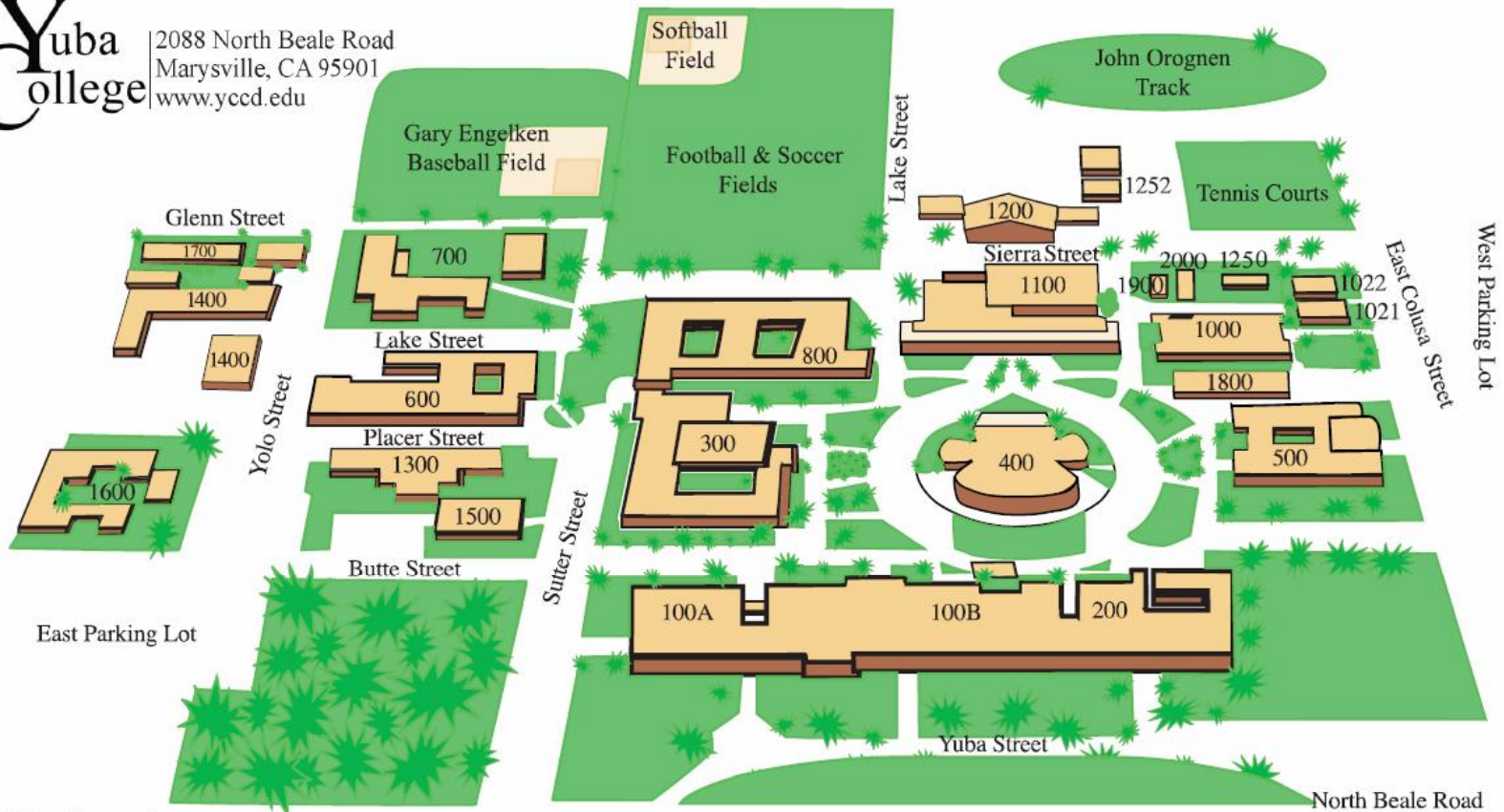
**Master Schedule
Measure J Bond Program**



Yuba College – Marysville



2088 North Beale Road
Marysville, CA 95901
www.yccd.edu



Map Legend

- | | | | |
|------|--|------|--|
| 100A | District Administration, Personnel | 1100 | College Success Ctr, ITV 2 Classroom, Learning Resources Center, Library |
| 100B | EOP&S, Financial Aid, Registration, Student Support Services | 1200 | Athletics and Gymnasium |
| 200 | Music | 1250 | Classroom |
| 300 | Yuba College Administration, Bookstore, Cafeteria, Campus Life | 1300 | Collins Hall, Foundation, Photography |
| 400 | Box Office and Theatre | 1400 | Maintenance, Print Shop |
| 500 | Business and Social Science | 1500 | Osuna Hall |
| 600 | Applied Arts, Science & Technology | 1600 | Warren Hall: Child Care Center, Police Dept |
| 700 | Engineering, Math, MESA & Nursing | 1700 | Automotive Body and Public Safety |
| 800 | Life & Physical Sciences | 1800 | Disabled Students & Veterans Services |
| 1000 | Fine/Language Arts | 1900 | Distributive Education Center, ITV 1 Classroom |
| 1021 | Classroom | 2000 | Adaptive Physical Education |
| 1022 | Classroom | | |

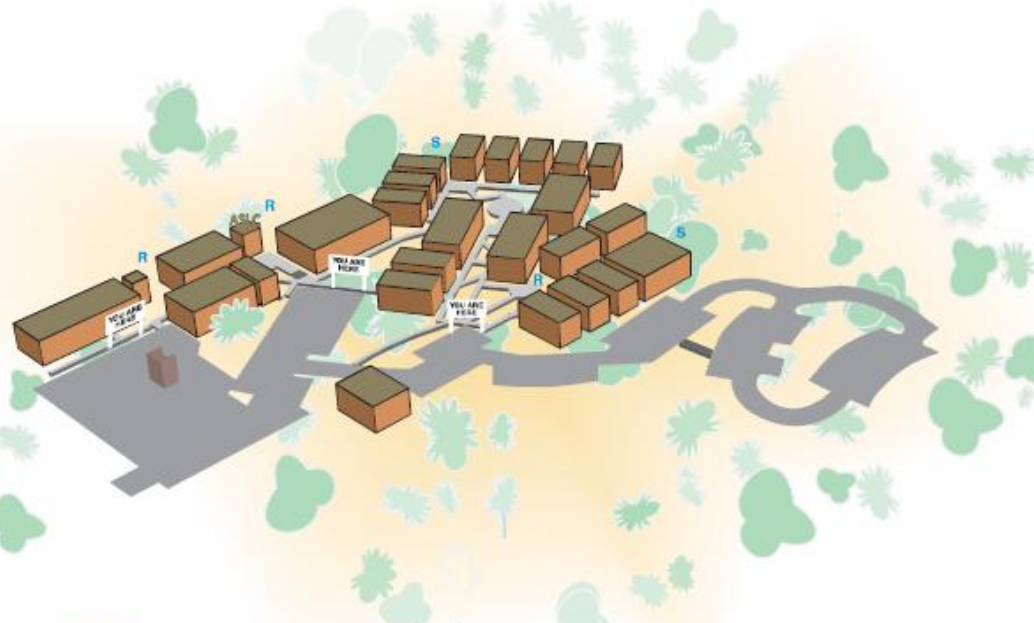
Program Review – Yuba College

Yuba College - Marysville		Construction Type	Gross Square Footage	Preliminary Construction Budget
J-02	Bldg 100A – Administration Building	Renovation	7,400	\$960,000
J-03	Bldg 100B – Student/Instruction Services	Renovation	22,500	\$1,920,000
J-04	Bldg 200 – Music Department	Renovation	7,500	\$1,600,000
J-05	Bldg 300 – Student Center / Bookstore	Renovation	26,000	\$3,000,000
J-06	Bldg 400 – Theatre	Renovation	14,000	\$1,240,000
J-07	Bldg 500 – Business Department (FPP – Funding 2007/2008)	Renovation	15,600	\$8,000,000
J-08	Bldg 600 – Applied Arts, Science/Tech	Renovation	24,000	\$1,040,000
J-09	Bldg 700 – Math/Engineering/Computer (IPP – Funding 2010/2011)	Renovation	14,000	\$1,640,000
J-10	Bldg 800 – Life Sciences & Nursing	Renovation	31,400	\$80,000
J-11	Bldg 900 – Utilities Services	Renovation	N/A	\$2,800,000
J-12	Bldg 1000 – Liberal Arts Consumer Ed (Project Under Construction)	Renovation	17,000	\$1,200,000
J-13	Bldg 1100 – Library & Language Arts (FPP – Funding 2009/2010)	Renovation	42,000	\$9,600,000
J-14	Bldg 1200 – Athletic Dept & Gymnasium	Renovation	50,000	\$6,480,000
J-15	Bldg 1250 – ESL (Demolish Structure)	Demolition	N/A	\$160,000
J-16	Bldg 1300 – Collins Hall/Staff Offices	Renovation	14,000	\$400,000
J-17	Bldg 1400 – Maintenance/Print Shop	Renovation	10,500	\$1,040,000

Program Review – Yuba College

Yuba College - Marysville		Construction Type	Gross Square Footage	Preliminary Construction Budget
J-18	Bldg 1500 – Osuna (Demolish Structure)	Demolition	11,200	\$320,000
J-19	Bldg 1600 – Child Development & Police Dept.	Renovation	13,000	\$400,000
J-20	Bldg 1700 – Admin Justice & Automotive	Renovation	16,500	\$80,000
J-21	Bldg 1800 – Student Services	Renovation	4,300	\$160,000
J-22	Bldg 1900 – Distributive Education Center	Renovation	2,100	\$40,000
J-23	East Parking Lot	Renovation	TBD	\$640,000
J-24	New Soccer Field	New	N/A	\$800,000
J-25	New Building – Health & Public Safety	New	65,000	\$23,600,000
J-26	Upgrade Press Box/Score Board, Etc.	Renovation	250	56,000
J-27	Pool (Demolition)	Demolition	TBD	\$160,000
J-28	Swing Space (Completed)	Renovation	N/A	\$80,000
J-30	Technology/Telecoms/Security System	Upgrades	N/A	\$80,000

Yuba College - Clear Lake Campus




Clear Lake Campus
 15880 Dam Road Extension
 Clearlake, CA (707) 995-7900

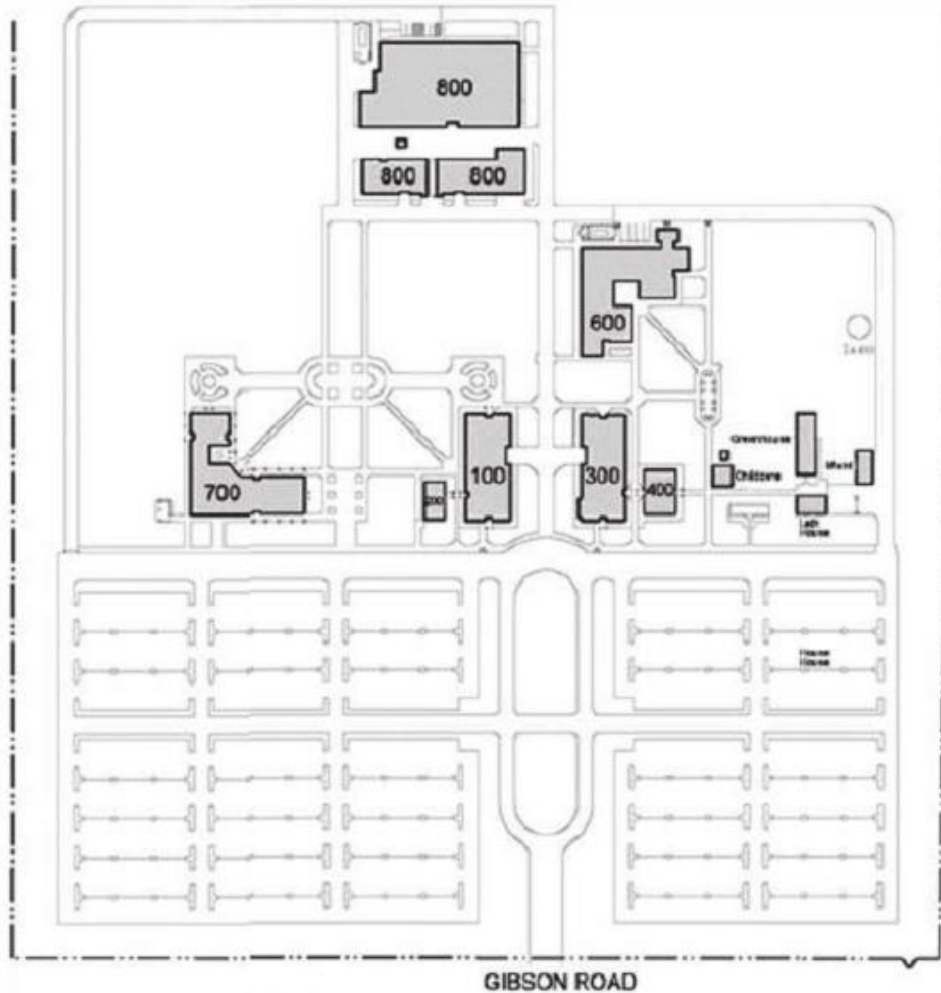
- | | |
|------------|--|
| 100-A | Student Bookstore & Cultural Arts |
| -B | Student Lounge |
| -F/G | Restrooms |
| 200- | Library, Quiet Study Area,
Transfer Center, Career Center |
| | Testing Center |
| 300-A | Science Lab |
| -B | Learning Center, GED Program |
| -C-F | Offices of Professors Alexander, Lyons, & Strik
DSPS Services |
| 400-A | Business /Computer Lab |
| -B | Office of Professor Morgan |
| -C | Office |
| -D | Office of Professor Hanson |
| 401-A | Food Service Classroom |
| -B | Aromas Restaurant |
| -C | Offices of Professors Schoenherr & Papin |
| 402 | Student Services Center: College Administration,
Financial Aid, EOP & S, CARE, Counseling |
| 403- | Restrooms |
| 500-A | Applied Arts Classrooms |
| -D | Photo Lab |
| 601-605 | Lake County Resource Center (601- Business Services) |
| 701-702 | Classroom, Meeting Room |
| 800-A/B | Yuba College Distance Learning |
| 801- | Child Care Center |
| 901-908 | Classrooms |
| Areas 'S'- | Smoking Areas |
| Areas 'R'- | Recycling Receptacles |

Program Review – Clear Lake Campus

Yuba College - Clear Lake Campus		Construction Type	Gross Square Footage	Preliminary Construction Budget
J-32	New Building – Student Services Center (FPP – Funding 2009/2010)	New	40,000	\$14,400,000
J-33	Renovate Portables & Upgrade Utilities	Renovation / Upgrades	15 Structures	\$1,744,000

Woodland Community College

WOODLAND COMMUNITY COLLEGE
 2300 E. Gibson Road Woodland, CA 95776



LEGEND

<u>BLDG</u>		<u>ROOM</u>
100	President of the College	112
	Admissions & Records	113
	ASWCC	119
	Campus Police	127
	Classrooms	
	Conference Room	114
	Mailroom/Copy Center	113B
	Student Lounge	102
Tutoring Center	104	
200	Follett's Bookstore	201
	Cooperative Work Experience	205
300	Classrooms	
	Business Computer Labs	301/305
	Nursing Lab	314
400	Ag-Plant Science/Art Labs	401/402
	Classrooms	
600	Dean of Instruction	614
	Biology Labs	626/629
	Chemistry Labs	601/604
	Classrooms	
	Computer Lab	623
	Conference Room	621
	Information Systems	620
Physics/Earth Science Lab	625	
700	Dean of Student Services	711
	CalWORKS	740
	CARE	743
	Counseling	749
	Distributive Learning	732
	DSP&S	755
	English/Math Computer Lab	701
	EOP&S	743
	Library	732
	Media Services	726
	Peer Counselors	743
	Transfer Center	749
	University Representatives	742
Veterans Outreach	745	
800	Learning Resource Center Construction in progress Completion Spring 2007	

WOODLAND CAMPUS

Program Review

Woodland Community College

Woodland Community College		Construction Type	Gross Square Footage	Preliminary Construction Budget
J-34	Performing Arts Center/Culinary Arts (FPP – Funding 2009/20010)	New	55,000	\$23,200,000
J-35	Renovate Building 700	Renovation	15,300	\$640,000
J-36	Multi-Purpose Facility (IPP – Funding 2010/2011)	New	30,000	\$10,400,000
J-37	Soccer Field	New	N/A	\$1,200,000
J-38	Baseball Field	New	N/A	\$960,000
J-39	Multi-Building Renovations	Renovation / Upgrades	TBD	\$1,440,000
J-40	Grounds Improvements	Renovation	N/A	\$240,000
J-41	Softball Field	New	N/A	\$1,200,000

Woodland Community College - Colusa		Construction Type	Gross Square Footage	Preliminary Construction Budget
J-42	Outreach Facility - Colusa	New	7,000	\$2,400,000

Program Review – Sutter County

Yuba College – Sutter County Facility	Construction Type	Gross Square Footage	Preliminary Construction Budget
J-01 New Building – Offices/Classrooms	New	60,000	\$18,800,000

Measure J Program Status

- Establishing Project Priorities
- Validating Project Scope and Budget
- Developing Project Sequencing / Master Schedule
- Reviewing A/E Qualifications for Major Bond Projects
- RFQ for On-Call Professional Services

Review of RFQ

- **Goals of Solicitation**
 - Present the opportunities of Measure J
 - Encourage the submittal of qualifications to the District to establish a pool of Professional Services providers
 - Reach out to local community
- **How this solicitation fits into the Big Picture**
 - Bi-Annual Recertification, if required
- **Concept of On-Call Services**
 - As required by program demands
- **Task Order Contract Format**
 - Task Order Values up to \$69,000 each
 - Cumulative Task Order values not to exceed \$150,000
- **Anticipated Services**

Review of RFQ

Anticipated Services

- Architectural/Engineering Services
 - Architectural Programming and Design
 - **Mechanical, Electrical, Plumbing** (eff: 10/16)
 - Constructability Reviews
 - Interior / Space Planning
 - Civil Engineering
 - Structural Building Surveys
 - Utility Infrastructure Surveys
 - Surveying
 - Soils / Geo-Technical
 - Landscape Architecture
 - Hazardous Materials Surveys / Air Monitoring
 - Environmental Analysis
 - Security Systems / Planning
 - Value Engineering
 - Building Commissioning Services (**LEED™**)
- Land Use
 - CEQA
 - EIR
 - Traffic / Parking
- Construction-Related
 - Project Inspection (**IOR**)
 - Special Tests / Inspections

Selection Process / Timeline for RFQ 08-003J On-Call Professional Services

10/18/07	Pre-Submittal Conference
10/19/07	Questions pertaining to the RFQ due by NOON in writing via Facsimile (530.743.3896) to the Director – Bond Facilities Construction.
10/30/07	SOQ Submittals Due no later than 2:00 p.m.
10/31/07 – 11/9/07	Initial review of submittals for responsiveness and prioritization.
Ongoing	Short lists (3 – 5 firms) for specific disciplines / professional services. Rankings determined.
Ongoing	Recommendations for award will be ongoing based on Measure J Program demands.

RFQ Questions

- RFQ Questions due by Noon Friday, October 19, 2007.
- Submit via Facsimile only to: Director – Bond Facilities Construction at 530.743.3896.
- District responses to questions regarding the RFQ, as well as any necessary addenda will be posted to, and only available on, the Measure J Bond website by close of business Wednesday, October 24, 2007.

YCCD Measure J Bond Program RFQ 08-003J Pre-Submittal Conference

Questions & Answers

(Does everyone have a card?)

The information presented herein is
subject to revision in response to Measure J Bond Requirements