



Measure J Bond Program Status Report
December 31, 2009
For the Citizens' Bond Oversight Committee
(Presented For Information Only - No Action Required)

- I. **COST SUMMARY** (Attachment A)
- II. **PROJECT STATUS** (Attachment B)

Project Activity Summary

Yuba College – Marysville

J-01 – Sutter County Facility, Educational Component – (tBP Architects)

- Schematic Design nears completion for this project.
- DPR Construction (Lease/Leaseback Contractor) continues pre-construction activities for the project.

Multi-Building Renovations (J-02, Building 100A; J-03, Building 100B; J-04, Building 200; J-05, Building 300; J-13, Building 1100) – (LPAS)

- Programming Phase for these projects is in progress.

J-06 – Building 400, Performing Arts Renovation – (HGA Architects)

- Construction continues on this project.
- Structural work is 80% complete, and work has begun on interior finishes.
- Project is scheduled for completion in mid-June 2010.

J-07 – Building 500, Business Department – (DLR Architects)

- This project has been combined with J-09 Building 700.
- No activity to report.

J-08 – Building 600, Applied Arts and Science Technology – (ImageWorks)

- This project has been combined with J-21 Building 1800
- Phase I of this project has been completed.
- Phase II, which includes ADA compliance requirements, will begin soon after final determination of scope for work to be completed in the Auto Shop and Welding Technologies.

J-09 – Building 700, Math/Engineering/Computer – (DLR Architects)

- This project has been combined with J-07 Building 500.
- No activity to report.

J-14 – PE Complex (Stafford King Weise Architects – SKW)

- Work on this project has been scheduled in two volumes (or phases).
- Volume I is the Outdoor Athletic Complex
 - Groundbreaking ceremony was held at the end of November, 2009
 - Construction activities began in December, 2009, with demolition and backfill of the out-of-service pool.
 - Work currently underway is earthwork and site grading.
- Volume II is the renovation of Building 1200 (Gymnasium)
 - Construction documents for the Renovation of Building 1200 were submitted to DSA for review in December, 2009.

J-16 – Building 1300 – Collins Hall (ImageWorks)

- No activity to report.

J-19 – Building 1600 – Warren Hall (ImageWorks)

- No activity to report.

J-21 – Building 1800 – Student Services (ImageWorks)

- This project has been combined with J-08 Building 600.
- Building renovations have been completed on Phase I of this project.
- Phase II will include ADA compliance items, with the exterior ramp of that work scheduled for completion in January, 2010.
- Items remaining to be accomplished will be interior ADA required improvements.

J-25 – Allied Health & Public Safety Building (LPA Sacramento)

- Construction Documents for this project continue in development.
- Work on this project will be broken into three phases: Phase I will be site work, parking lot and campus walk areas; Phase II will be the Health & Public Safety building construction; and Phase III will be the Fire Tower.
- Sundt Construction (Lease/Leaseback Contractor) continues pre-construction activities for the project.

Yuba College – Clear Lake Campus

J-32 – Student Services Building (TLCD Architects)

- A project kickoff meeting, with the project architect, is scheduled in January, 2010. Design development will begin shortly thereafter.
- The District continues work on final determination of building location.

J-33 – Renovation of Portables & Utilities Upgrade

- No activity to report.

Woodland Community College

J-35 – Building 700 – Student Services Center (gkkworks)

- Construction activities have begun on this project, with interior demolition completed.
- Work has begun on interior concrete areas, as well as on layout of electrical, mechanical, and plumbing work.

J-39 – Building 100, 300 & 400 Renovations (Gelfand Partners Architects)

- Design Development has been completed.

J-42 – Colusa County Educational Outreach Facility (Beverly Prior Architects)

- The first project meeting with the contractor was held the end of December, 2009, with construction activities scheduled to begin as soon as weather permits.
- Groundbreaking ceremonies are being organized for January, 2010.

District

J-01 – Sutter County Facility, Educational Component – (tBP Architects)

- Schematic Design nears completion for this project.
- DPR Construction (Lease/Leaseback Contractor) continues pre-construction activities for the project.

J-30 – Technology/Telecoms/Security Systems

- Construction for the HVAC Upgrades began in December, 2009, and is scheduled for completion in March, 2010.
- Work on the Wire Management Upgrade was begun and completed during Winter Recess in December, 2009.

III. PROGRAM PHOTOS (Attachment C)

**YUBA COMMUNITY COLLEGE DISTRICT
MEASURE J BOND PROGRAM
PROGRAM COST SUMMARY**

Totals as of December 31, 2009

Project	Other Bond Costs	Current Project Budget	Obligations / Commitments to Date	Paid to Date	Open Encumbrance	% Obligated	% Complete
-	Issuance, Underwriting and Insurance Costs	\$ -	\$ 1,713,582	\$ 1,713,582	\$ -	Complete	
Project	District Facilities/Systems						
J-01	Sutter County Facility	\$ 29,499,999	\$ 3,658,030	\$ 1,350,090	\$ 2,307,940	12.40%	4.58%
J-29	Payoff 11/05 Borrowing	\$ 4,971,026	\$ 4,971,027	\$ 4,971,027	\$ -	Complete	
J-30	Technology/Telecoms/Security Sys	\$ 5,500,000	\$ 2,368,893	\$ 1,883,067	\$ 485,827	43.07%	34.24%
J-44	Bond Staff Support Costs	\$ 400,000	\$ 75,715	\$ 75,715	\$ -	18.93%	18.93%
J-45	Clearing Account	\$ -	\$ 795,174	\$ 196,098	\$ 558,699	See Footnote 1	
J-48	Bldg 1700 – Remodel, Campus Police	\$ 300,001	\$ 4,725	\$ 4,725	\$ -	1.57%	1.57%
	Subtotal Allocated Costs	\$ 40,671,026	\$ 11,873,564	\$ 8,480,722	\$ 3,352,466	29.19%	20.85%
Project	Yuba College - Marysville						
J-02	Bldg 100A – Administration Bldg	\$ 662,000	\$ 102,842	\$ 17,896	\$ 84,946	15.54%	2.70%
J-03	Bldg 100B – Student/Instruction Services	\$ 3,722,003	\$ 348,738	\$ 70,350	\$ 278,388	9.37%	1.89%
J-04	Bldg 200 – Music Department	\$ 897,429	\$ 194,491	\$ 20,712	\$ 173,780	21.67%	2.31%
J-05	Bldg 300 – Student Center/Bookstore	\$ 2,236,837	\$ 484,990	\$ 117,624	\$ 367,366	21.68%	5.26%
J-06	Bldg 400 – Theatre	\$ 3,730,062	\$ 3,392,989	\$ 1,494,625	\$ 1,898,365	90.96%	40.07%
J-07	Bldg 500 – Business Dept (Classrooms)	\$ 8,759,490	\$ 628,493	\$ 279,430	\$ 349,063	7.17%	3.19%
J-08	Bldg 600 – Applied Arts, Science/Tech	\$ 260,600	\$ 580,000	\$ 474,774	\$ 105,226	See Footnote 2	
J-09	Bldg 700 – Math/Engineering/Computer	\$ 2,155,650	\$ 296,938	\$ 139,532	\$ 157,406	13.77%	6.47%
J-10	Bldg 800 – Life Sciences & Nursing	\$ 180,150	\$ 158,572	\$ 143,472	\$ 15,100	88.02%	79.64%
J-11	Bldg 900 – Utilities Services	\$ 2,958,319	\$ 401,584	\$ 385,162	\$ 84,472	13.57%	13.02%
J-12	Bldg 1000 – Liberal Arts Consumer Ed	\$ 1,631,500	\$ 1,442,900	\$ 1,411,779	\$ 31,121	88.44%	86.53%
J-13	Bldg 1100 – Library & Language Arts	\$ 16,986,730	\$ 1,598,419	\$ 366,987	\$ 1,231,431	9.41%	2.16%
J-14	Bldg 1200 – PE Complex	\$ 13,387,596	\$ 6,514,269	\$ 1,454,952	\$ 5,059,317	48.66%	10.87%
J-15	Bldg 1250 – ESL (Demolish Structure)	\$ 254,000	\$ 4,151	\$ 4,151	\$ -	1.63%	1.63%
J-16	Bldg 1300 – Collins Hall – Staff Offices	\$ 263,000	\$ 44,294	\$ 35,810	\$ 8,484	16.84%	13.62%
J-17	Bldg 1400 – Maintenance/Print Shop	\$ 1,244,945	\$ 36,654	\$ 36,654	\$ -	2.94%	2.94%
J-18	Bldg 1500 – Osuna (Decommission)	\$ 474,318	\$ 7,358	\$ 7,358	\$ -	1.55%	1.55%
J-19	Bldg 1600 – Warren Hall	\$ 504,000	\$ 63,320	\$ 46,679	\$ 16,641	12.56%	9.26%
J-20	Bldg 1700 – Automotive	\$ 100,000	\$ 16,187	\$ 16,187	\$ -	16.19%	16.19%
J-21	Bldg 1800 – Student Services DSPS	\$ 214,505	\$ 453,674	\$ 322,011	\$ 131,663	See Footnote 2	
J-22	Bldg 1900 – Distributive Ed Center	\$ 43,957	\$ 21,282	\$ 21,282	\$ -	Complete	
J-23	East Parking Lot (included in J-25)	\$ -	\$ -	\$ -	\$ -	-	-
J-24	New Soccer Field (included in J-14)	\$ -	\$ -	\$ -	\$ -	-	-
J-25	Allied Health & Public Safety Building	\$ 18,971,950	\$ 1,986,057	\$ 1,196,557	\$ 789,500	10.47%	6.31%
J-26	Upgrade Press Box/Score Board, Etc. (Included in J-14)	\$ -	\$ -	\$ -	\$ -	-	-
J-27	Demolition Pool (Included in J-14)	\$ -	\$ -	\$ -	\$ -	-	-
J-28	Swing Space	\$ 742,008	\$ 894,375	\$ 899,665	\$ -	See Footnote 2	
J-47	YC Maintenance Equipment	\$ 250,000	\$ 259,046	\$ 237,662	\$ 21,384	103.62%	95.06%
	Subtotal Yuba College - Marysville	\$ 80,631,048	\$ 19,931,623	\$ 9,201,311	\$ 10,803,653	24.72%	11.41%

Attachment A

YUBA COMMUNITY COLLEGE DISTRICT MEASURE J BOND PROGRAM PROGRAM COST SUMMARY							
Totals as of December 31, 2009							
		Current Project Budget	Obligations / Commitments to Date	Paid to Date	Open Encumbrance	% Obligated	% Complete
Project	Yuba College - Clear Lake Campus						
J-31	Pay Off COPS	\$ 3,053,259	\$ 3,053,259	\$ 3,053,259	\$ -	Complete	
J-32	Student Services Center	\$ 19,670,000	\$ 1,561,693	\$ 369,580	\$ 1,192,114	7.94%	1.88%
J-33	Renovate Portables & Upgrade Utilities	\$ 1,560,999	\$ 68,312	\$ 42,112	\$ 26,200	4.38%	2.70%
	Subtotal Yuba College - Clear Lake Campus	\$ 24,284,258	\$ 4,683,264	\$ 3,464,951	\$ 1,218,314	19.29%	14.27%
Project	Woodland Community College						
J-34	Performing Arts Center/ Culinary Arts	\$ 41,865,774	\$ 709,474	\$ 707,474	\$ 2,000	1.69%	1.69%
J-35	Renovate Bldg 700	\$ 2,754,200	\$ 2,712,345	\$ 509,256	\$ 2,203,089	98.48%	18.49%
J-36	Multi-Purpose Facility	\$ 16,315,896	\$ 323,855	\$ 322,741	\$ 1,113	1.98%	1.98%
J-37	Soccer Field (Deferred)	\$ -	\$ -	\$ -	\$ -	-	-
J-38	Baseball Field (Deferred)	\$ -	\$ -	\$ -	\$ -	-	-
J-39	Multi Bldg Renovations	\$ 1,959,313	\$ 774,297	\$ 508,027	\$ 266,270	39.52%	25.93%
J-40	Grounds Improvements	\$ 697,246	\$ 1,046,826	\$ 711,707	\$ 335,120	See Footnote 2	
J-41	Softball Field (Deferred)	\$ -	\$ -	\$ -	\$ -	-	-
J-42	Colusa County Out Reach Facility	\$ 3,500,000	\$ 5,613,290	\$ 1,913,956	\$ 3,699,335	160.38%	54.68%
J-46	WCC Maintenance Equipment	\$ 150,000	\$ 121,151	\$ 121,151	\$ -	80.77%	80.77%
	Subtotal Woodland Community College	\$ 67,242,428	\$ 11,301,238	\$ 4,794,312	\$ 6,506,927	16.81%	7.13%
Project	Equipment						
J-43	Group II Equipment	\$ 14,000,000	\$ 187,063	\$ 110,682	\$ 76,381	1.34%	0.79%
TOTAL PROJECT COSTS		\$ 226,828,759	\$ 49,690,333	\$ 27,765,559	\$ 21,957,741	21.91%	12.24%

¹ Expenditures in project J-45 are distributed to all applicable projects at the end of each fiscal year.

² Budget overages will be corrected when the Measure J Bond Budget yearly review is complete.

**YUBA COMMUNITY COLLEGE DISTRICT
MEASURE J BOND PROGRAM
PROJECT STATUS MATRIX**

December 31, 2009

		Planning / Pre-Design	A/E Selection	Programming	Schematic Design	Design Development	Construction Documents	DSA	Bid & Award	Construction	Close-Out	Remarks
Project	District Facilities/Systems											
J-01	Sutter County Facility				●							
J-30	Emergency Backup Generator											Project Complete.
J-30	Server Room HVAC Upgrade									●		
J-30	Server Room Wire Mgmt & Racks									●		
J-48	Bldg 1700 – Campus Police Relocation											
Project	Yuba College - Marysville											
J-02	Bldg 100A – Administration Bldg			●								
J-03	Bldg 100B – Student/Instruction Services			●								
J-04	Bldg 200 – Music Department			●								
J-05	Bldg 300 – Student Center/Bookstore			●								
J-06	Bldg 400 – Theatre									●		
J-07	Bldg 500 – Business Dept (Classrooms)					●						On hold awaiting possible state funding.
J-08	Bldg 600 – Applied Arts, Science/Tech					●					●	
J-09	Bldg 700 – Math/Engineering/Computer					●						On hold awaiting possible state funding.
J-10	Bldg 800 – Life Sciences & Nursing											Project Complete.
J-11	Bldg 900 – Utilities Services/Fire Water						●					Fire Water Distribution System
J-11	Central Plant		●									District Developing RFQ.
J-12	Bldg 1000 – Liberal Arts Consumer Ed											Project Complete.
J-13	Bldg 1100 – Library & Language Arts			●								State Funded.
J-14	Bldg 1200 – Athletic Dept & Gym (Bldg.)							●				
J-14	Athletic Fields									●		
J-15	Bldg 1250 – ESL (Demolish Structure)											
J-16	Bldg 1300 – Collins Hall – Staff Offices						●					Deferred until further scope definition.
J-17	Bldg 1400 – Maintenance/Print Shop											
J-18	Bldg 1500 – Osuna (Demolish Structure)											
J-19	Bldg 1600 – Warren Hall		●									On hold until further scope definition.
J-20	Bldg 1700 – Automotive											
J-21	Bldg 1800 – Student Services										●	Bldg. 1800 Renovations
J-21	Bldg 1800 – Student Services									●		Bldg. 1800 ADA Upgrades
J-22	Bldg 1900 – Distributive Ed Center											Project Complete.
J-23	East Parking Lot – Resurface						●					Included in project J-25
J-24	New Soccer Field									●		Included in project J-14

Attachment B

**YUBA COMMUNITY COLLEGE DISTRICT
MEASURE J BOND PROGRAM
PROJECT STATUS MATRIX**

December 31, 2009

		Planning / Pre-Design	A/E Selection	Programming	Schematic Design	Design Development	Construction Documents	DSA	Bid & Award	Construction	Close-Out	Remarks
Project	Yuba College - Marysville (continued)											
J-25	Health & Public Safety Building											
J-25	Increment 1: Site Work, E. Parking, Campus Walk						●					
J-25	Increment 2: Building						●					
J-25	Increment 3: Fire Tower					●						
J-26	Upgrade Press Box/Score Board, Etc									●		Included in project J-14
J-27	Demolition Pool									●		Included in project J-14
J-28	Swing Space											Project Complete.
Project	Yuba College - Clear Lake Campus											
J-32	Student Services Center		●									
J-33	Renovate Portables & Upgrade Utilities		●									
Project	Woodland Community College											
J-34	Performing Arts Center/Culinary Arts											State Funded.
J-35	Renovate Bldg 700									●		
J-36	Multi-Purpose Facility											State Funded.
J-37	Soccer Field											Deferred/potential State Funding.
J-38	Baseball Field											Deferred/potential State Funding.
J-39	Multi Bldg Renovations						●					
J-39	Bldg. 300 - Campus Police Relocation											Project Complete.
J-39	Bldg. 300 - Geology Lab Relocation											Project Complete.
J-40	Grounds Improvements											Gibson Road Improvements Complete
J-40	Parking ADA Access											Project Complete.
J-40	Parking Painting, Striping and Sealing											On hold until further scope definition.
J-40	Domestic Water Connection									●		
J-40	Pioneer H. S. Access Walk	●										On hold until further scope definition.
J-41	Softball Field											Deferred/potential State Funding.
J-42	Colusa County Outreach Facility									●		



Measure J Bond Program Status Report
as of December 31, 2009
Attachment C

Projects at Yuba College



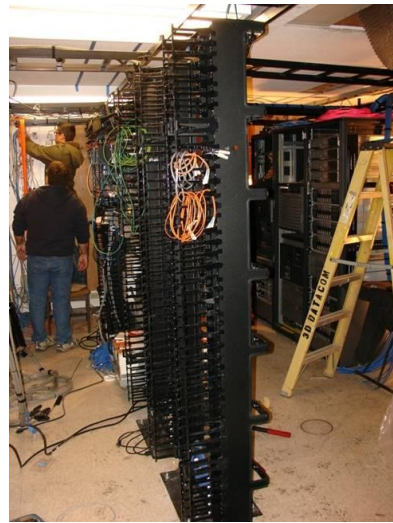
J-14 - Pool Demolition



J-21 - Building 1800 ADA Renovations



J-30 - IT Server Room HVAC Upgrades



J-30 - IT Server Room Wire Management



J-35 - Building 700 Renovation Project



J-42 - Colusa County Education Outreach Facility